




Office of the City Manager

WORKSESSION  
September 15, 2015

To: Honorable Mayor and Members of the City Council

From:  Dee Williams-Ridley, Interim City Manager

Submitted by: Michael K. Meehan, Chief of Police

Subject: Mid-year 2015 Crime Report

INTRODUCTION

At the request of City Council, the City Manager provides semi-annual reports on crime statistics in Berkeley. This report provides information on reported Part One crime for January through June of 2015 and compares those statistics with mid-year crime data from 2011 through 2014. This report provides Council with accurate crime data with the intent of informing the discussion on current efforts to reduce crime and victimization in the City of Berkeley.

CURRENT SITUATION AND ITS EFFECTS

In the first six months of 2015, reported Part One crime in Berkeley increased by 23% overall. With the exception of a decrease in homicides, Part One crimes increased in all categories with the largest numerical increase found in larceny/theft. Increases in Part One crime are being experienced across numerous regional jurisdictions, and increases have also been reported across California. There are various factors being considered as causes for these increases.

Homicides

There were no homicides in Berkeley during the first six months of the 2015. Felony aggravated assaults and cold case investigation continue to be a focus of our investigators.

Robberies

Overall, robberies have increased 53%, from 108 in 2014 to 165 this year compared to the first half of 2013 when there were 221 robberies. Pedestrian robberies increased 52%. This increase appears to have begun in late 2014 robberies trended upwards.

### Rape and Aggravated Assaults

The FBI implemented the revised Uniform Crime Report sexual assault definition in January 2015 which resulted in nationwide increases in reported sexual assault statistics. Reported rapes were up 22%, an increase of 3 cases, as compared to 2014. Of Berkeley's 17 reported rapes, 9 would not have been recorded under the previous UCR definition. Eighty eight percent of reported rapes involved an acquaintance of some type, either recently introduced, or previously known to the victim. Alcohol was also present in most of the cases. There were two reported stranger rapes. No other similar incidents were reported. Aggravated Assaults were up 44%, with 22 additional incidents than in 2014. Aggravated assaults often involve people who know each other. Many of those cases involved victims or suspects who are homeless and/or suffering from mental illness or in some cases both. There were no unusual series to report in either category.

### Burglary, Larceny and Auto Theft

Overall, Part One Property crimes increased by 21%. Burglaries increased 38% compared to 2014, with residential burglaries increasing by 86%, while commercial burglaries decreased by 19%. Burglaries of garages and sheds are included as they are categorized as "residential" burglaries. Larcenies were up by 17%, two hundred ninety one cases, and there were forty-six more Auto Thefts, a 15% increase as compared to the first six months of 2014.

### Data

Data on serious crime is collected annually by the Federal Bureau of Investigation (FBI) from over 17,000 law enforcement agencies representing over 90% of the U. S. population. The FBI's primary objective in the Uniform Crime Report (UCR) is to generate a reliable set of crime statistics for use in law enforcement administration, operation, and management in the United States. The UCR tracks the following crimes:

#### Violent Crimes

Murder  
Rape  
Robbery  
Aggravated Assault

#### Property Crimes

Burglary  
Larceny (petty and grand theft, auto burglary)  
Auto Theft  
Arson\*

*\*Arson is a UCR crime tracked separately from violent and property crime. It is included in the accompanying graphs.*

The UCR data provides the Berkeley Police Department the ability to analyze national and local crime trends, determine the effectiveness of response to crime, and conduct future planning and potential resource allocation. The FBI UCR handbook discourages using UCR statistics to compare crime rates of one jurisdiction to another because of the complex variables affecting crime and crime reporting practices.

## **BPD Crime Prevention and Response Strategies**

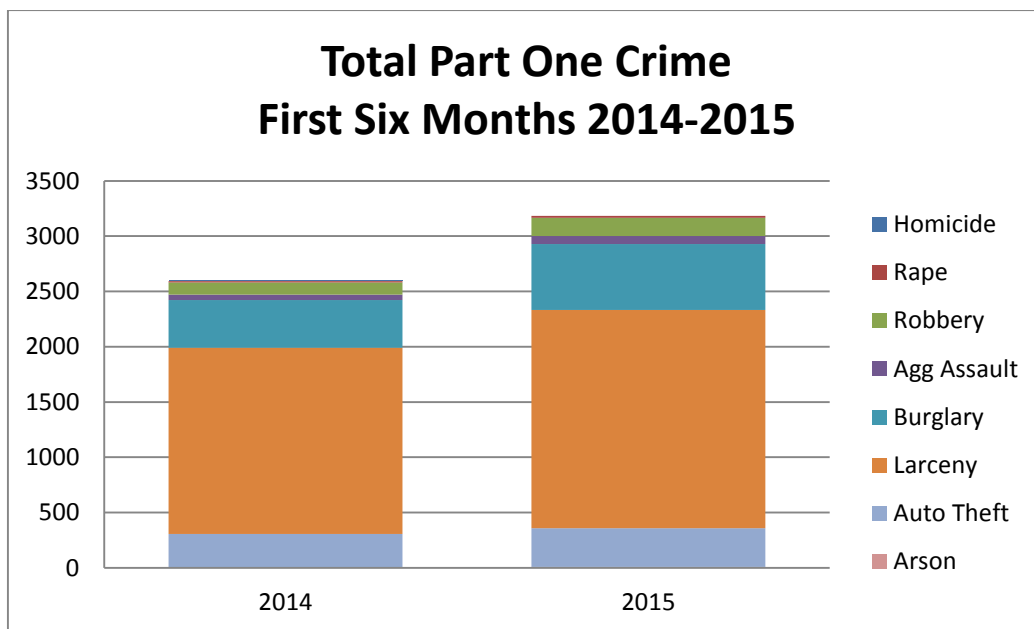
2015 has been a challenging year for law enforcement. The Berkeley Police Department's goal was to reduce the level of Part One Crime experienced in 2014 (the lowest in 50 years). The Department continued to implement crime prevention and response strategies and increase community engagement, including:

- Continued rapid and robust response to crimes in progress.
- Increasing focus on prevention of crime.
- Weekly Crime Analysis and Response Strategy meetings and coordination of focus and resources, including identification and focus on chronic offenders.
- Frequent and regular internal communication regarding crime trends, series, chronic and wanted offenders, and crime prevention strategies.
- Auto burglary suppression teams in areas and at times when data suggested the highest likelihood of auto burglaries will occur.
- Collaboration with UCPD on rape awareness and prevention education.
- Youth Services Detectives collaborating with Juvenile Probation to determine if high risk juvenile offenders are involved in Berkeley's residential burglaries.
- Strategically use of bike patrols in the downtown area, and collaboration with UCPD on bike patrols on and around Telegraph Avenue.
- In collaboration with UCPD, beginning use of "Bait Bike" program to apprehend Berkeley bicycle thieves.
- Education and support regarding BikeIndex.org online bicycle registry program to help identify and recover stolen bicycles.
- Work with BART to write and distribute community alerts and bulletins to increase rider awareness and to teach personal safety measures designed to reduce victimization.
- Pursuit of Department of Justice COPS grant which, if obtained, would fund part of the cost of an additional School Resource Officer that could positively support focus on services, support and intervention for students at risk of involvement in crime.
- In January 2015, the department implemented a new beat structure to improve efficiency and equalize workload among patrol officers. The Department plans to analyze the new structure to verify that the changes have resulted in beats being consistently staffed during most hours of the day and night and officer workload levels are equally distributed across beats.
- Utilizing Nixle social media alert and notification service to inform the community about crime prevention strategies, police incidents (e.g. missing persons at risk) and road closures caused by traffic accidents.
- Continued Crisis Intervention training (CIT) of officers and supervisors.
- Monthly Berkeley Safe Neighborhood Committee Meetings to address public safety concerns and collaborate on safety strategies.

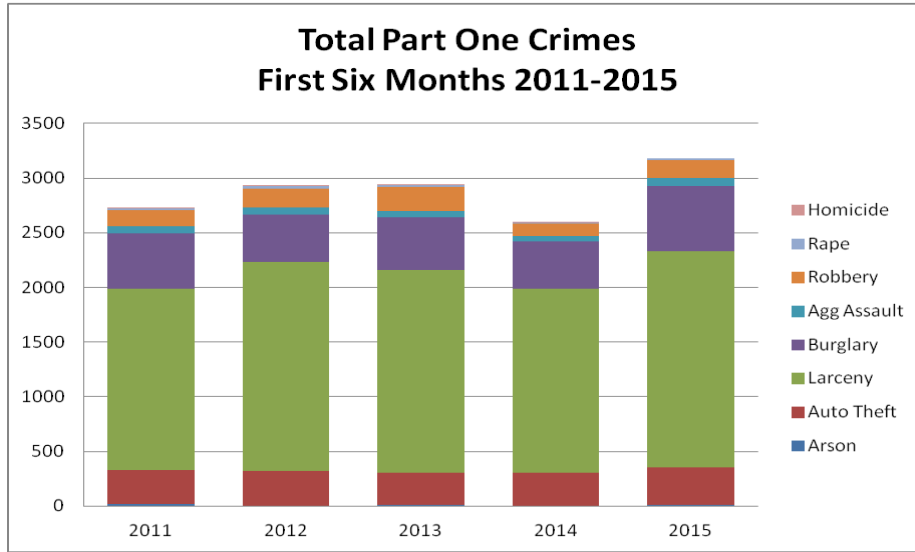
The attached graphs include six-month totals of UCR data for Part One Violent and Property Crimes for 2014 and 2015 in Berkeley, as well as five-year trends in Part One Violent Crimes and Part One Property Crimes.

Graphs below include:

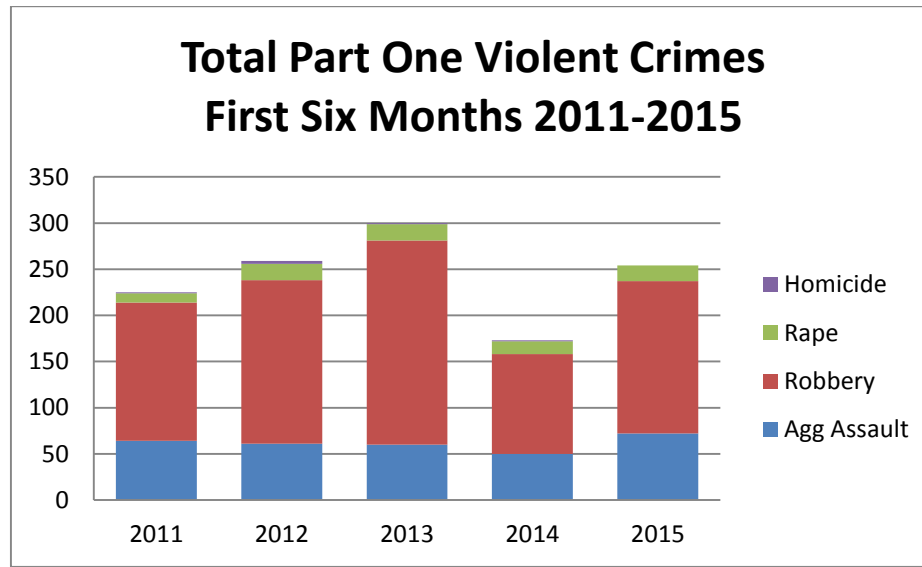
- UCR Part One Violent and Property Crime, two year trend
- UCR Part One Violent and Property Crime, five year trend
- UCR Part One Violent Crime, five year trend
- UCR Part One Property Crime, five year trend



	Homicide	Rape	Robbery	Agg Assault	Burglary	Larceny	Auto Theft	Arson
2014	1	14	108	50	432	1683	302	5
2015	0	17	165	72	598	1974	348	9

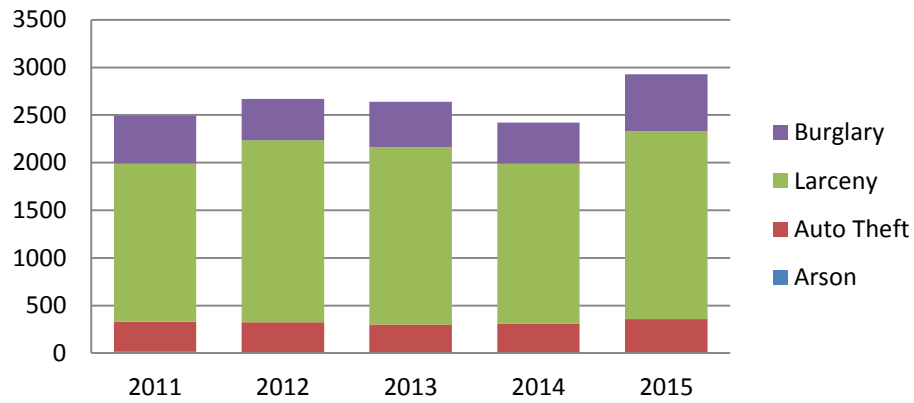


	Homicide	Rape	Robbery	Agg Assault	Burglary	Larceny	Auto Theft	Arson
2011	1	10	150	64	506	1661	314	15
2012	3	18	177	61	433	1910	319	6
2013	1	18	221	60	479	1860	293	8
2014	1	14	108	50	432	1683	302	5
2015	0	17	165	72	598	1974	348	9



	Homicide	Rape	Robbery	Agg Assault
2011	1	10	150	64
2012	3	18	177	61
2013	1	18	221	60
2014	1	14	108	50
2015	0	17	165	72

## Total Part One Property Crimes First Six Months 2011-2014



	Burglary	Larceny	Auto Theft	Arson
2011	506	1661	314	15
2012	433	1910	319	6
2013	479	1860	293	8
2014	432	1683	302	5
2015	598	1974	348	9

### ENVIRONMENTAL SUSTAINABILITY

There are no identifiable environmental opportunities or effects associated with the subject of this report.

### CONTACT PERSON

Michael K. Meehan, Chief of Police, (510) 981-5900