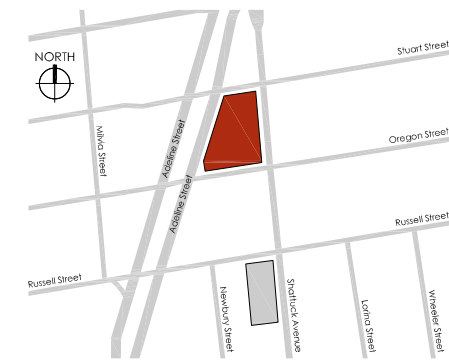


R.O.W. ENCROACHMENT

ENCROACHMENTS INTO THE PUBLIC R.O.W. (PER CBC 3202):
 -ARCHITECTURAL FEATURES BELOW 8' IN HEIGHT SUCH AS COLUMNS, PILASTERS, BASES, AND MOLDINGS SHALL NOT PROJECT MORE THAN 12"
 -ARCHITECTURAL FEATURES 8' OR HIGHER ARE PERMITTED TO ENCROACH 1" PER EACH ADDITIONAL 1" OF CLEARANCE ABOVE 8', BUT THE MAXIMUM ENCROACHMENT SHALL NOT EXCEED 4'-0"
 -ARCHITECTURAL FEATURES 15' OR HIGHER SHALL BE PERMITTED AND SHALL NOT BE LIMITED
 -THE VERTICAL CLEARANCE FROM THE PUBLIC R.O.W. TO THE LOWEST PART OF ANY AWNING SHALL NOT BE LESS THAN 7'-0"
 -AWNINGS, CANOPIES, MARQUEES AND SIGNS LOCATED LESS THAN 15' ABOVE THE SIDEWALK SHALL NOT EXTEND INTO MORE THAN 2/3 THE WIDTH OF THE SIDEWALK, MEASURED FROM THE BUILDING; STANCHIONS OR COLUMNS SUPPORTING THESE ELEMENTS SHALL BE LOCATED NOT LESS THAN 2' IN FROM THE CURB LINE.

VICINITY MAP



ARRIS
STUDIO ARCHITECTS

ADDRESS
1327 ARCHER STREET, SUITE 220
SAN LUIS OBISPO, CA 93401
CONTACT
805.547.2240
ARRIS-STUDIO.COM
THOMAS E. JESS ARCHITECT #17608
STEPHEN A. RIGOR ARCHITECT #C33672
ARCHITECT OF RECORD

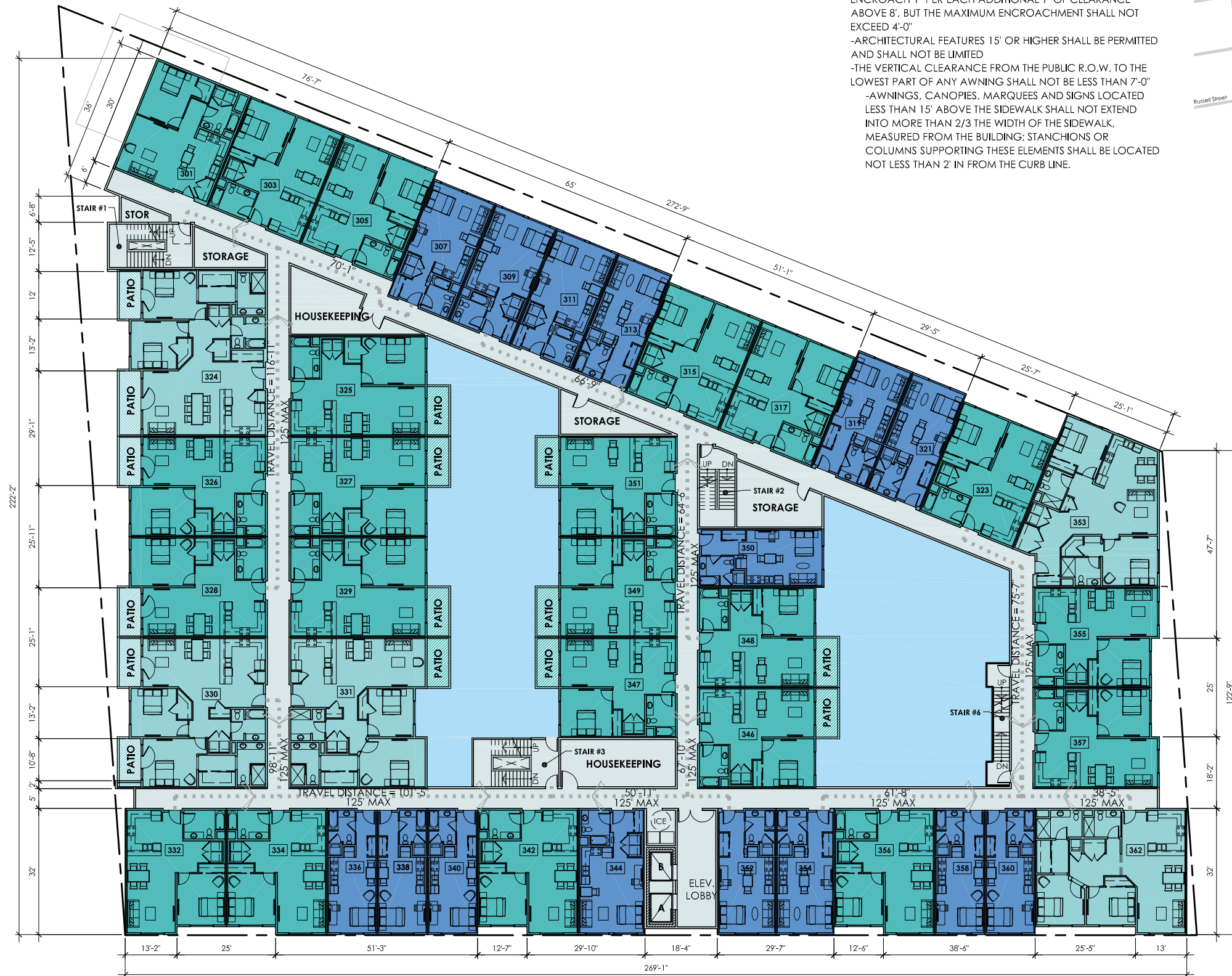


A PROJECT FOR:
NX VENTURES
2343 STUART STREET
BERKELEY, CA 94704
510.692.2994
NX-VENTURES.COM

THE BERKELEY COLLECTION
COMMERCIAL | HOTEL | RESIDENTIAL
2801 ADELINE ST. & 2900 SHATTUCK AVE, BERKELEY, CA
SITE #1: 2801 ADELINE STREET
3RD LEVEL FLOOR PLAN

DATE
JANUARY 15, 2021
ARRIS PROJECT #
A19103
CITY OF BERKELEY APPLICATION #
ZP2020-0118
SHEET #

A2.04



ROOM COLOR LEGEND

- HOME2SUITES STUDIO DBL QUEEN
- HOME2SUITES STUDIO KING
- HOME2SUITES STUDIO 1-BED SUITE
- STUDIO UNIT
- 1-BED UNIT
- 2-BED UNIT
- CIRCULATION/ACCESSORY SPACES
- HOTEL AMENITIES
- MULTI-FUNCTION SPACE

CONCEPTUAL FLOOR LAYOUT - THIRD LEVEL FLOOR PLAN