



# Ohlone Greenway Safety Improvements

---

Upcoming Pedestrian and Cyclist Detours

April 27, 2026

# Meeting Administration

- Meeting will be recorded
- Duration: 6p – 7:30p
- Questions at end of presentation
  - To speak raise hand
  - 60 seconds to speak



# Agenda

- Introductions
- Project Overview
- Pedestrian Detours
- Cyclist Detours
- Questions

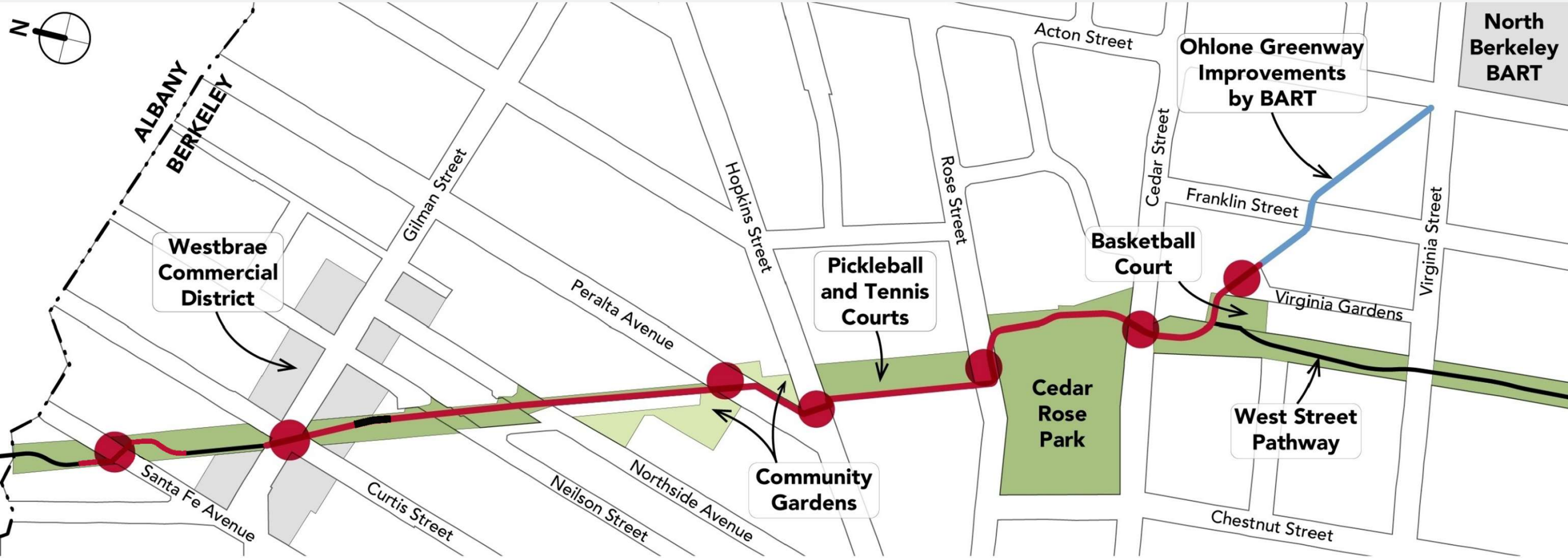


# Introductions

# Project Team

- **Jesse Peoples**, Current Project Manager, City of Berkeley
- **Ken Jung**, Initial Project Manager, City of Berkeley
- **Steve Patterson**, Resident Engineer, Consor/City of Berkeley
- **Mark Helmbrecht**, Transportation Manager, City of Berkeley
- **Phil Villanueva**, Construction Project Manager,  
Bauman Landscape & Construction
- **Dewi Bleher**, Urban Designer, Community Design + Architecture

# Project Overview



# Schedule

- Construction duration:
  - Late April/May 2026 – early 2027
- Where to get updates:
  - Project webpage: [berkeleyca.gov/your-government/our-work/capital-projects/ohlone-greenway-safety-improvements-project](https://berkeleyca.gov/your-government/our-work/capital-projects/ohlone-greenway-safety-improvements-project)
  - Traffic Advisories webpage: [berkeleyca.gov/city-services/streets-sidewalks-sewers-and-utilities/traffic-advisories](https://berkeleyca.gov/city-services/streets-sidewalks-sewers-and-utilities/traffic-advisories)



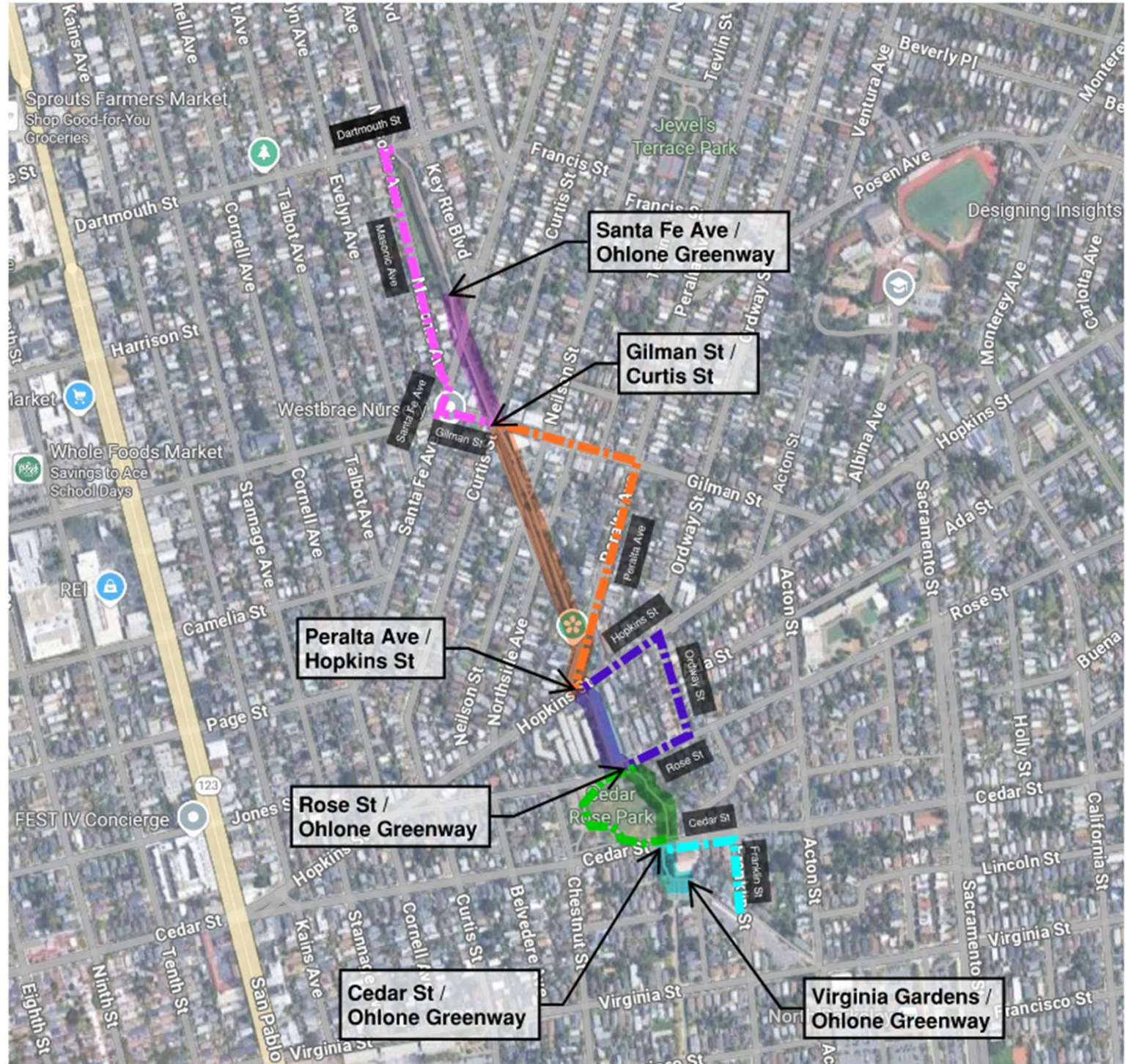
# Pedestrian Detours

# Ohlone Greenway Safety Improvements Pedestrian Detour Plan



## All Phases

-  Phase 1a Construction Limit
-  Phase 1a Pedestrian Detour Route
-  Phase 1b Construction Limit
-  Phase 1b Pedestrian Detour Route
-  Phase 1c Construction Limit
-  Phase 1c Pedestrian Detour Route
-  Phase 1d Construction Limit
-  Phase 1d Pedestrian Detour Route
-  Phase 2 Construction Limit
-  Phase 2 Pedestrian Detour Route



# Ohlone Greenway Safety Improvements Pedestrian Detour Plan



## Phase 1a: Virginia Gardens to Cedar Street

- Overall Project Limit
- Phase 1a Construction Limit
- Phase 1a Pedestrian Detour Route



# Ohlone Greenway Safety Improvements Pedestrian Detour Plan



## Phase 1b: Cedar Street - Rose Street

- Overall Project Limit
- Phase 1b Construction Limit
- Phase 1b Pedestrian Detour Route



# Ohlone Greenway Safety Improvements Pedestrian Detour Plan



## Phase 1c: Rose Street - Hopkins Street




- Overall Project Limit
- Phase 1c Construction Limit
- Phase 1c Pedestrian Detour Route

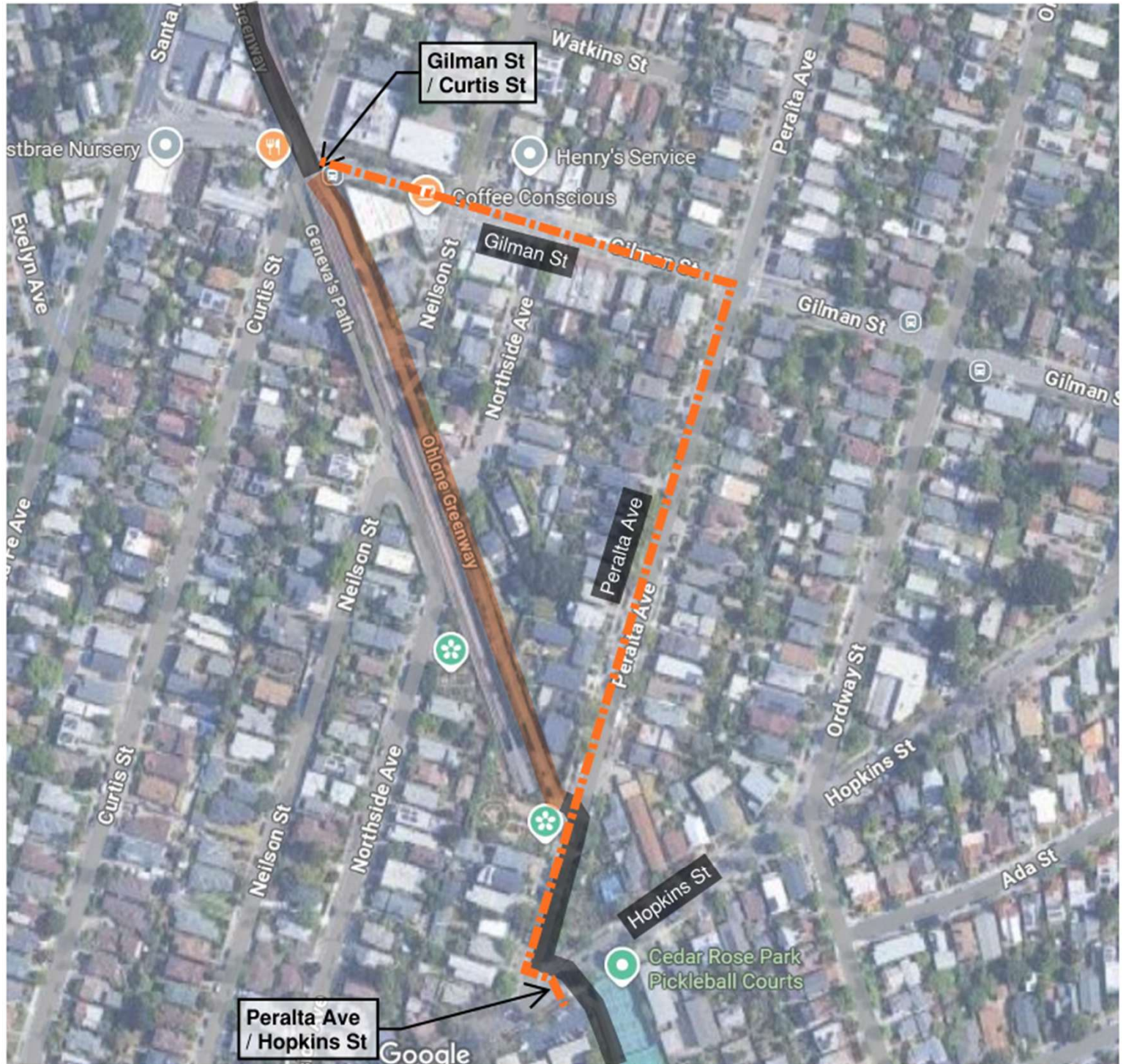


# Ohlone Greenway Safety Improvements Pedestrian Detour Plan



## Phase 1d: Hopkins Street - Gilman Street

-  Overall Project Limit
-  Phase 1d Construction Limit
-  Phase 1d Pedestrian Detour Route



# Ohlone Greenway Safety Improvements Pedestrian Detour Plan



## Phase 2: Gilman Street - Santa Fe Ave

- Overall Project Limit
- Phase 2 Construction Limit
- Phase 2 Pedestrian Detour Route



# Cyclist Detours

# Ohlone Greenway Safety Improvements Bike Detour Plan




## All Phases

-  Phase 1 Construction Limit
-  Phase 1 Bike Detour Route
-  Phase 2a Construction Limit
-  Phase 2a Bike Detour Route
-  Phase 2b Construction Limit
-  Phase 2b Bike Detour Route

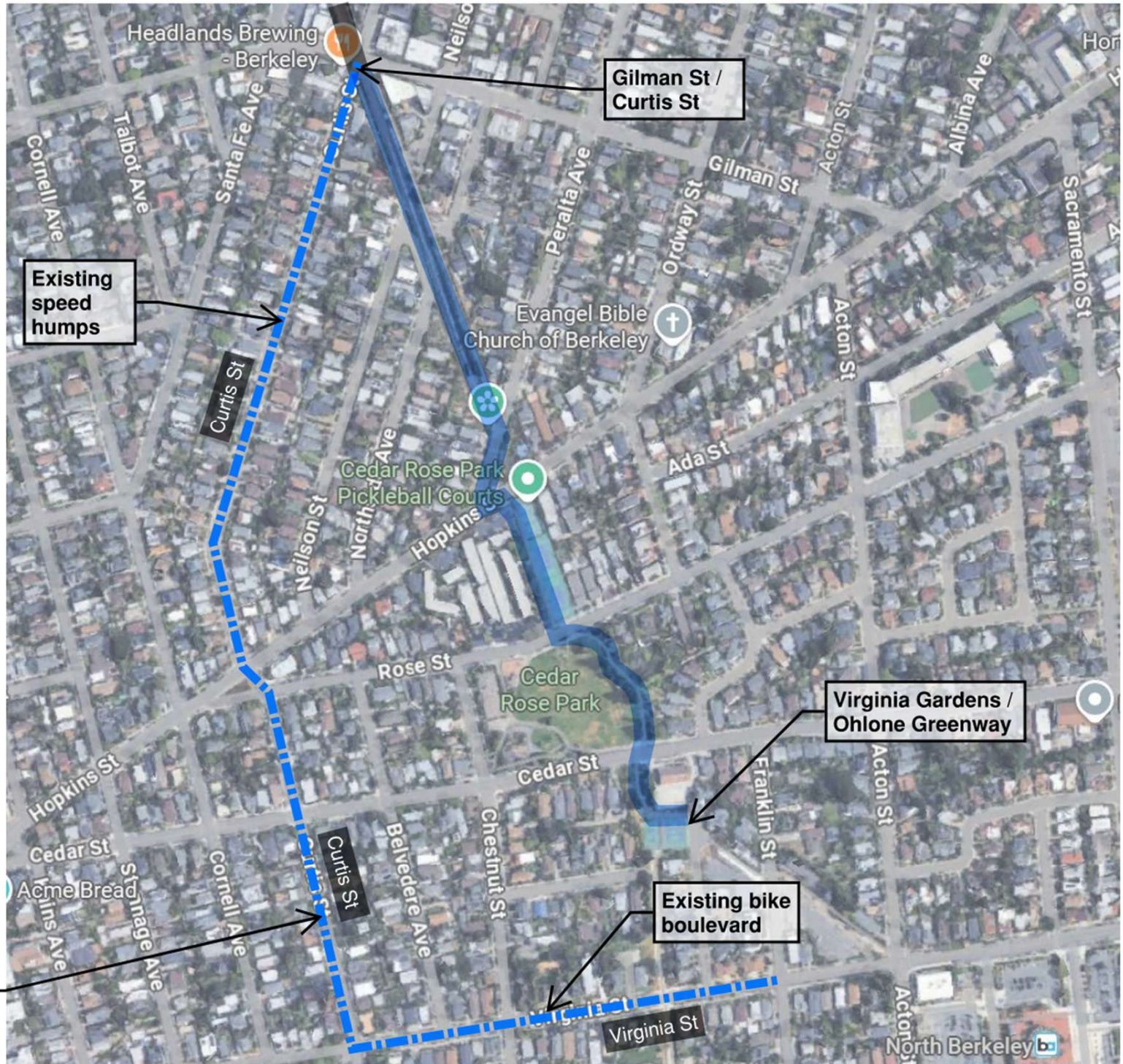


# Ohlone Greenway Safety Improvements Bike Detour Plan

## Phase 1: Virginia Gardens - Gilman Street



-  Overall Project Limit
-  Phase 1 Construction Limit
-  Phase 1 Bike Detour Route



**Existing speed tables**

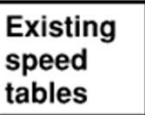


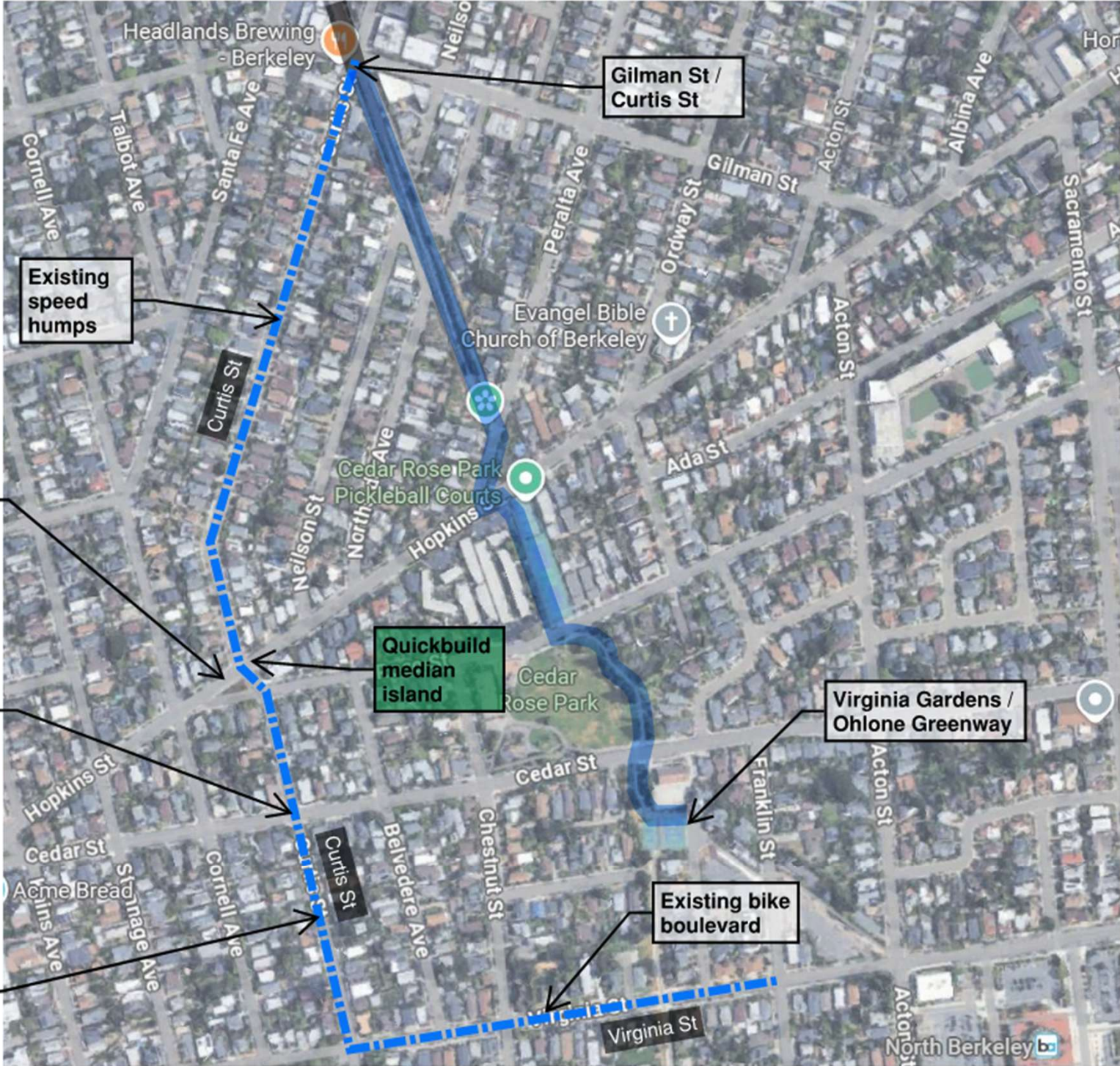
# Ohlone Greenway Safety Improvements Bike Detour Plan

## Phase 1: Virginia Gardens - Gilman Street

-  Overall Project Limit
-  Phase 1 Construction Limit
-  Phase 1 Bike Detour Route


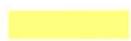

-  Speed cushion
-  Temporary ("trial") all-way stop control

 Existing speed tables



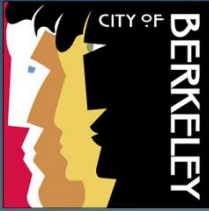
# Ohlone Greenway Safety Improvements Bike Detour Plan

## Phase 2a: Gilman Street / Curtis Street Intersection

-  Overall Project Limit
-  Phase 2a Construction Limit
-  Phase 2a Bike Detour Route







# Questions?



Project Website:



Jesse Peoples, Associate Civil Engineer  
[jpeoples@berkeleyca.gov](mailto:jpeoples@berkeleyca.gov)

Steve Patterson, Principal Construction Project Manager  
[Steve.Patterson@consoreng.com](mailto:Steve.Patterson@consoreng.com)