

DOCUMENT 00 9113

ADDENDA

SPECIFICATION NO. 26-11762-C

CITY OF BERKELEY

1947 CENTER ST. WINDOW REPLACEMENT PROJECT

1947 CENTER STREET

[DOCUMENT TO BE COMPLETED AS ADDENDA DURING BID PERIOD]

The following Addenda were issued, modifying the Project Manual:

Addendum No. 1, issued on **May 4, 2026**

Addendum No. 2, issued on **May 15, 2026**

(Addenda have been incorporated into the conformed Project Manual.)

END OF DOCUMENT

ADDENDUM NO. 2

MAY 15, 2026

The bid documents for Specification No. 26-11762-C for the 1947 Center St. Window Replacement Project are amended as follows:

1-1. Automatic Gas Shut-off Valve Addendum

This is required per BMC 19.34.040.

Furnish and install a 4-inch diameter automatic seismic valve on the gas supply to the building on the customer side of the existing natural gas PG&E meter. Provide additional shutoff valve as indicated on the attached sketch. The gas meter is located in gas meter room in the basement. See attached sketches and cut sheet for the seismic valve.

Coordinate all work with the city and PG&E for gas system shutdown. Provide proper ventilation in the gas meter room and establish safety procedure and practice throughout the entire gas line modification. Notify in advance the building owner and PG&E. Submit a written safety to the building owner/City of Berkeley for review and approval.

1-2. Drinking Fountain Addendum

Sheet P2.05 and P2.06:

Remove and salvage existing drinking fountain/cooler on basement, 1st floor, 2nd floor, 4th floor, 5th floor and 6th floor. Turn over the salvaged drinking fountain to the owner. Provide new dual hi and low drinking fountain/cooler. New drinking fountain/cooler shall be Elkay model lzstl8wssp1 with wall support carrier. Modify existing plumbing as necessary. Install drinking fountain/cooler per manufacturer's recommendations. See attached cut sheets.

QUESTIONS AWORKND RESPONSES:

2-1. Q: Please clarify the retention (retainage) percentage required.

A: Five percent (5%), see section 01 2000-3.

2-2. Q: Can you please advise when is this project supposed to start?

A: This project may begin three months or more after bidding is completed to allow time for Council approval and contract execution. However, as this is a Community Workforce Agreement (CWA) project, all required pre-job coordination meetings and union hall work assignments must be completed prior to construction activities. Mobilization would also need to occur after submittals have been reviewed and approved.

2-3. Q: Is there a prequalification requirement?

A: Qualifications are notes in Section 00 4513.

1.01 Minimum Bidder Qualifications.

- A. Bidders must be duly licensed in accordance with the California Business & Professions Code and have a history of work performance sufficient to meet the requirements of a responsible bidder in the California Public Contract Code Section 1104.
- B. Bidders must have three (3) years experience as a continuously operating entity engaged in the performance of similar work.
- C. Bidders must demonstrate successful experience with type of work of this Project, to include, within the past year, completed two (2) projects of a similar nature and complexity with a contract dollar amount of (i.) at least 75% of the amount of Bidder's Bid or (ii.) 125% of such amount in the aggregate.

2-4. Q: Does the engineering estimate include bid alternate items?

A: No, the engineering estimate includes base bid items only.

2-5. Q: Are there any service elevators?

A: No, the only elevators in the building are for passengers.

2-6. Q: Is there driveway access?

A: No.

2-7. Q: How will we get material to the 6th floor?

A: This will be determined by the contractor's means and methods. Any crane mobilization will require an approved TCP and all associated permits.

2-8. Q: Will we be able to scaffold or use a suspended scaffold?

A: This will be determined by the contractor's means and methods. Note that a scaffolding engineer will need to evaluate and provide structural calculations. If suspended scaffolding is used an engineer will need to evaluate the bearing capacity.

2-9. Q: Is the 5th floor work likely to be approved

A: The 5th floor scope is currently being considered and will depend on project budget availability.

2-10. Q: What material needs to be abated?

A: Exterior paint and putty have tested positive for lead. Concrete/stucco generally do not contain asbestos unless there is evidence of patchwork. Any patchwork or other suspect materials should be tested prior to removal.

2-11. Q: Where does abatement work start and end.

A: Abatement is limited to areas disturbed by contract work.

2-12. Q: What areas can be used for staging?

A: The contractor will be required to submit a staging plan during the submittal process and obtain all necessary permits. If staging impacts metered parking areas, a "No Parking" permit will also be required.

2-13. Q: Can we stage on the roof?

A: It is possible. However, an engineer will need to evaluate the bearing capacity

2-14. Q: Is this a historic building?

A: Yes, this building is registered under National Register of Historic Places.

2-15. Q: Will an office trailer be necessary, or can we use space in the building?

A: The contractor will have access to vacant areas on the 6th floor to set up their office space.

2-16. Q: Are all office finishes the same?

A: Mostly yes, though there are a few areas in common spaces with different paint colors. All other windows features and wall finishes are the same.

2-17. Q: How far back should demolition extend?

A: As needed. Refer to the contract documents for additional information.

2-18. Q: What will happen to the blinds?

A: The blinds are to be salvaged. The contractor will be responsible for removal and reinstallation.

2-19. Q: Will staff be relocated?

A: The 6th floor is currently vacant. For any work on the 5th floor, designated areas will be made available as needed.

2-20. Q: Is there electrical scope for the drinking fountain?

A: No, the existing duplex outlet is all that's required.

ADDENDUM

to the Contract Documents

10 May 2026

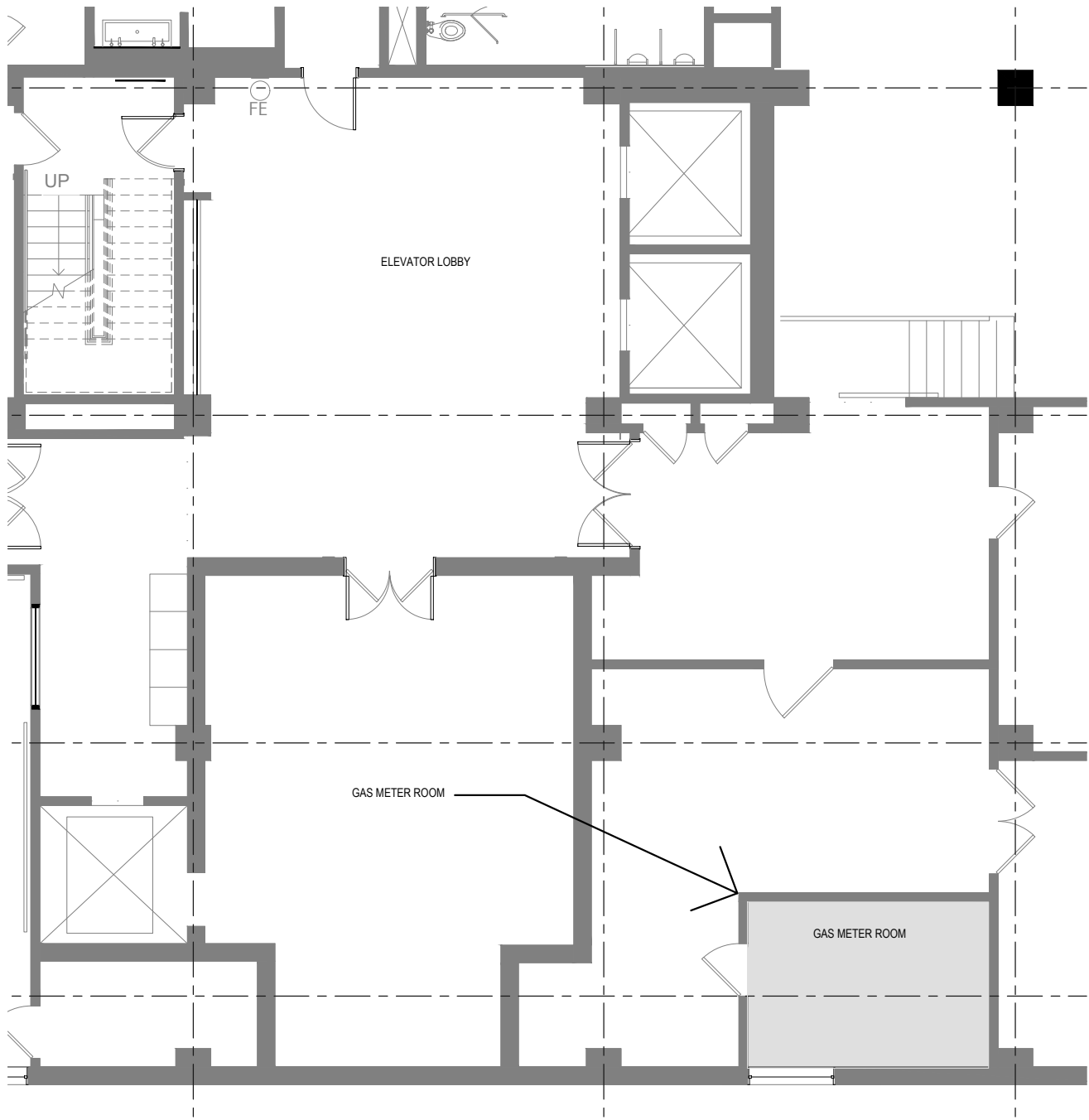
The following changes, additions, or deletions shall be made to the referenced documents as indicated and shall be a part thereof as if originally specified and/or shown. All other conditions remain the same.

Item 1

Furnish and install a 4-inch diameter automatic seismic valve on the gas supply to the building on the customer side of the existing natural gas PG&M meter. Provide additional shutoff valve as indicated on the attached sketch. The gas meter is located in gas meter room in the basement. See attached sketches and cut sheet for the seismic valve.

Coordinate all work with the City and PG&E for gas system shutdown. Provide proper ventilation in the gas meter room and establish safety procedure and practice throughout the entire gas line modification. Notify in advance the building Owner and PG&E. Submit a written safety to the building Owner/City of Berkeley for review and approval.

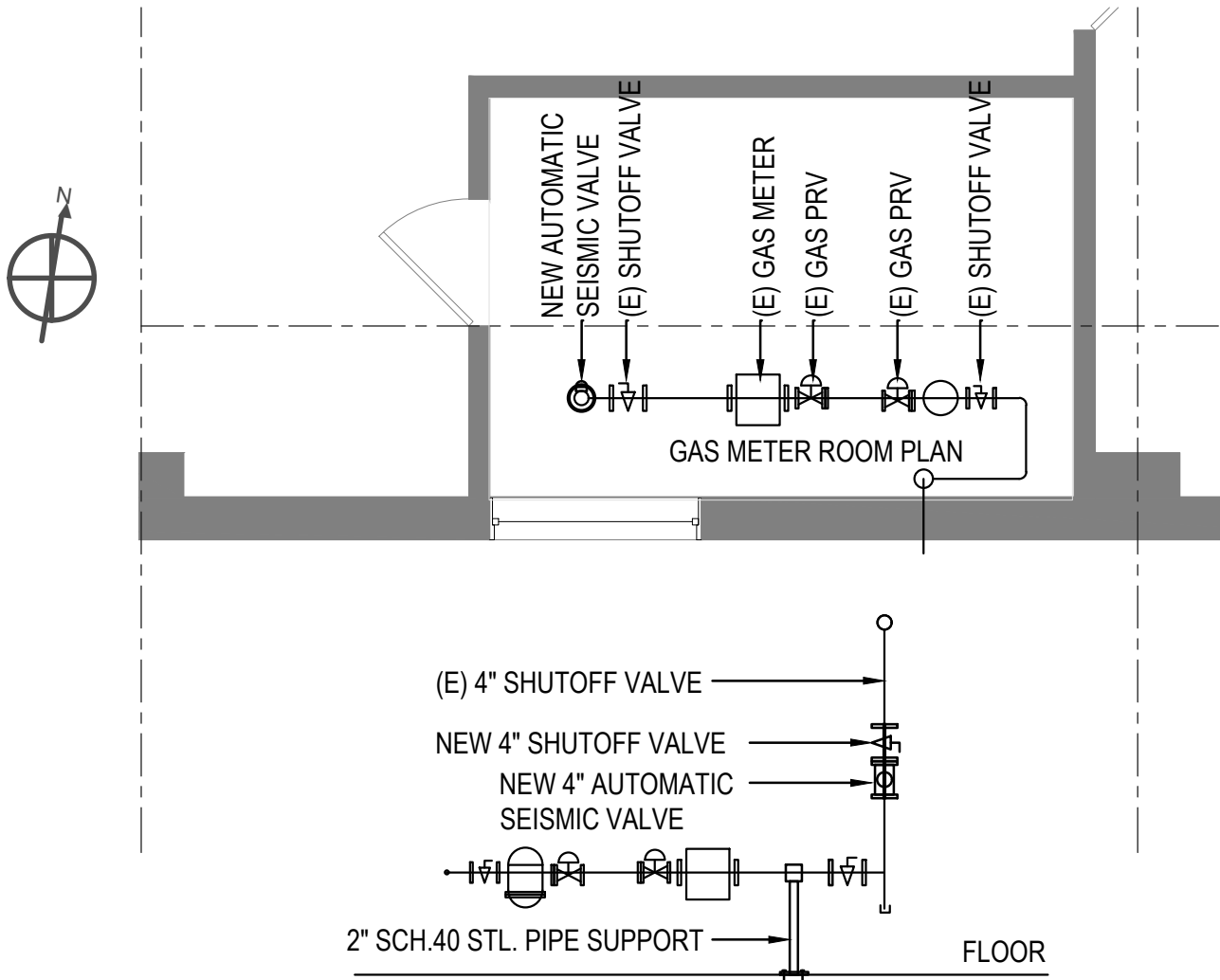
END OF ADDENDUM



PARTIAL BASEMENT PLAN

SCOPE OF WORK: FURNISH AND INSTALL AUTOMATIC GAS SEISMIC VALVE ON THE CUSTOMER SIDE OF THE PG&E GAS METER. LOCATE SEISMIC VALVE TO THE 4" RISER WITH SHUTOFF VALVE.

Noll&Tam/EPCE 274 Devonshire Street ph. (707) 980-4049 Vallejo, CA 94591 email: eddie.padilla@comcast.net	PROJECT: City of Berkeley City Hall 1947 Center Street		PROJECT NUMBER: 22511	DRAWING #: ADD-1 PAGE 1 OF 2
	TITLE: Natural Gas Service Seismic Valve Addition	DATE: 01.09.19	DWG REF #:	



GAS METER PIPING ELEVATION

SCOPE OF WORK: FURNISH AND INSTALL AUTOMATIC GAS SEISMIC VALVE ON THE CUSTOMER SIDE OF THE PG&E GAS METER. LOCATE SEISMIC VALVE TO THE 4" RISER WITH SHUTOFF VALVE. PROVIDE ADDITIONAL PIPE SUPPORT WITH 2" SCHEDULE 40 BLACK STEEL PIPE WITH (4) 1/2" EXPANSION SHIELD ANCHOR BOLTS, 3" EMBEDMENT.

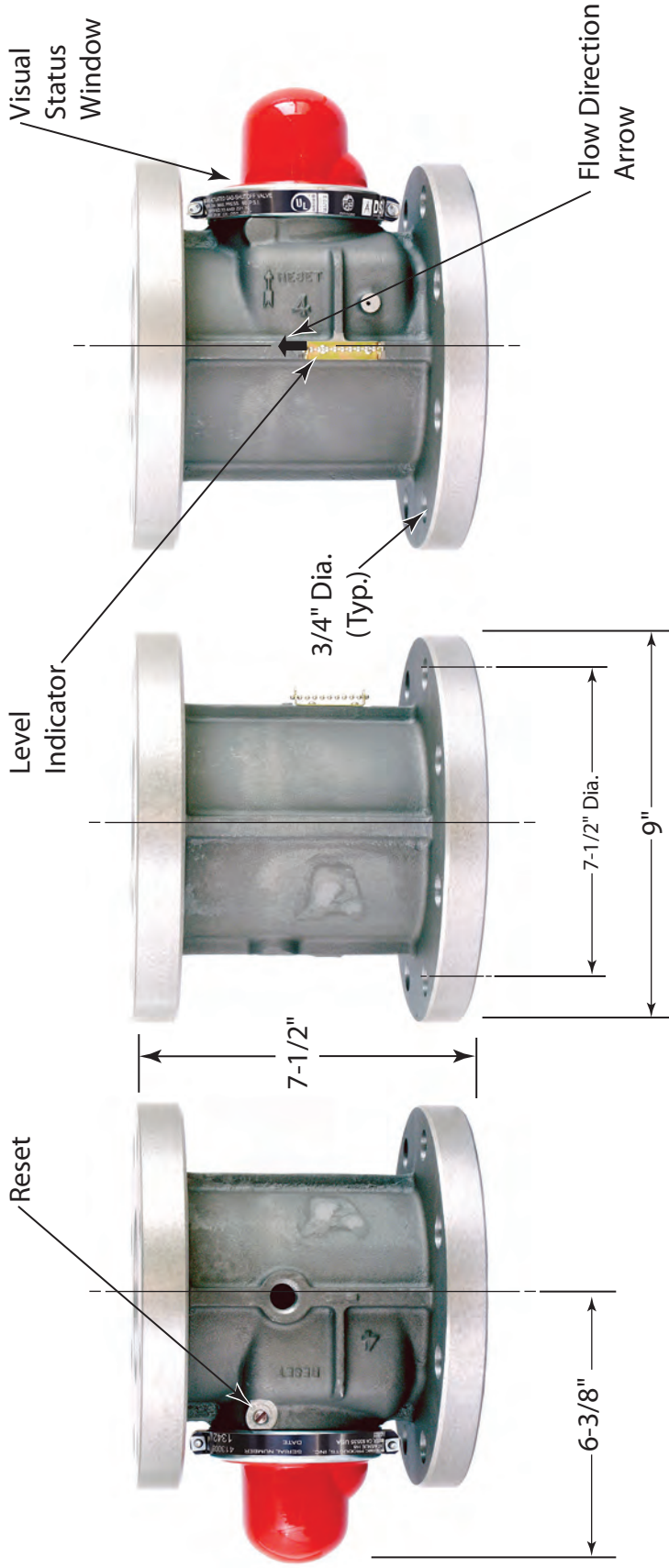
SPECIFICATIONS

1. AUTOMATIC SEISMIC VALVE: ANSI Z21.21 PACIFIC SEISMIC PRODUCT MODEL VB-316f(60) RAISE FACE FLANGED VALVE.
2. SHUTOFF VALVE: NORDSTROM LUBRICATED PLUG VALVE 120, ASME 150 PRESSURE CLASS, RAISED FACE FLANGED ENDS (ASME 16.5), WRENCH SQUARE-NUT OPERATOR, CARBON STEEL BODY, CARBON STEEL BOLTED COVER WITH LOCKING DEVICE FOR NATURAL GAS SERVICE.
3. PIPING: BLACK STEEL PIPE, SCHEDULE 40 WELDED JOINTS ASTM A53, CLASS 150 FLANGES ANSI B16.1. GASKET MATERIAL SUITABLE FOR NATURAL GAS.
4. GAS PIPING SHALL COMPLY WITH NFPA 54 AND CALIFORNIA PLUMBING CODE 2025.

Noll&Tam/EPCE 274 Devonshire Street ph. (707) 980-4049 Vallejo, CA 94591 email: eddie.padilla@comcast.net	PROJECT: City of Berkeley City Hall 1947 Center Street	PROJECT NUMBER: 22511	DRAWING #: ADD-1 PAGE 2 OF 2
	TITLE: Natural Gas Service Seismic Valve Addition	DATE: 01.09.19	

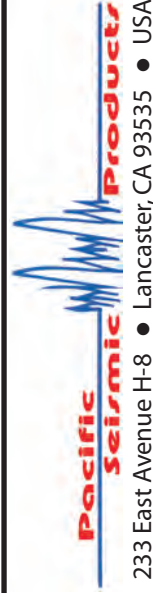
Specifications: Model VB-316F(60) Flanged Valve

Vertical - Bottom In Flow



Valve Model#	CA-DSA No.	Length	Height	Diameter	Nominal Pipe Size	APPLICATION DATA		Diameter On Center	Diameter Hole (Typ.)	Number of holes
						Max. Pressure	Fuel			
VB-316F	13-27	6-3/8"	7-1/2"	9"	4"	60 psi	Dry Fuel Gas	7-1/2" Dia.	3/4" Dia.	8

California Seismic Valves are UL listed in the USA. Certified by the California State Architect's Office, Approved by the City of Los Angeles, and are warranted free of manufacturer's defects for 30 years. All valves meet California Standards for Earthquake Actuated Automatic Gas Shut off Systems, Standard No. 12-12-1, ANSI Z21.21, 2012 and ASCE 25-06 Standards.



Tel (661) 942-4499
 Fax (661) 942-0999
 TF (800) 4-GAS-OFF
www.4GasOff.net

4" Model VB-316F California Seismic Valve

Flanged Vertical - Upward Flow

FLOW CAPACITY TABLE IWC/PSIG - Capacity S.C.F.H.

Merit Rating: Cv 480 (Equivalent Length of Pipe is 13 Feet)

For determining approximate values at selected natural gas pressures to 60 PSIG

Pressure Drop PSI	Inlet Pressures										
	8" iwc Inlet	14" iwc Inlet	3 psi Inlet	5 psi Inlet	7 psi Inlet	10 psi Inlet	20 psi Inlet	60 psi Inlet			
.0036	8,276	8,335	8,988	9,482	9,952	10,618	12,586	18,467			
.0072	11,702	11,786	12,710	13,409	14,073	15,015	17,798	26,116			
.0108	14,331	14,433	15,564	16,421	17,235	18,389	21,797	31,985			
.0144	16,546	16,664	17,970	18,960	19,900	21,232	25,168	36,932			
.0180	18,497	18,629	20,090	21,195	22,247	23,736	28,137	41,290			
.0216	20,260	20,404	22,005	23,216	24,368	26,000	30,821	45,230			
.0252	21,880	22,036	23,765	25,074	26,318	28,081	33,289	48,853			
.0288	23,388	23,555	25,404	26,803	28,133	30,017	35,585	52,225			
.0324	24,804	24,981	26,942	28,426	29,837	31,836	37,742	55,392			
.0360	26,143	26,329	28,396	29,961	31,448	33,556	39,782	58,387			
.0720	36,927	37,191	40,118	42,333	44,438	47,420	56,230	82,551			
.1080	45,172	45,496	49,084	51,799	54,379	58,035	68,832	101,080			
.1440	52,098	52,472	56,619	59,758	62,740	66,964	79,439	116,689			
.1800	58,177	58,596	63,237	66,750	70,086	74,813	88,769	130,430			

Vertical Valves

Maximum Pressures of Available Sizes	Sizes Available											Ambient Temperature CA DSA: -30°C (-22°F) to +70°C (158°F) Fluid Natural gas LP gas		
	NPT						Flanged							
	3/4"	1"	1 1/4"	1 1/2"	2"	2 1/2"	3"	4"	2"	2 1/2"	3"		4"	6"
7 psi	✓	✓	✓	✓	✓	✓	✓	✓	✓	✓	✓	✓	✓	✓
60 psi	✓	✓	✓	✓	✓	✓	✓	✓	✓	✓	✓	✓	✓	✓









ADDENDUM

to the Contract Documents

08 May 2026

Rev. 1

The following changes, additions, or deletions shall be made to the referenced documents as indicated and shall be a part thereof as if originally specified and/or shown. All other conditions remain the same.

Item

P2.05 and P2.06:

Remove and salvage existing drinking fountain/cooler on Basement, 1st Floor, 2nd Floor, 4th Floor, 5th Floor and 6th Floor. Turn over the salvaged drinking fountain to the Owner. Provide new dual Hi and Lo drinking fountain/cooler. New drinking fountain/cooler shall be Elkay model LZSTL8WSSP-W1 with wall support carrier. Modify exist plumbing as necessary. Install drinking fountain/cooler per manufacturer's recommendations. See attached cut sheets.

END OF ADDENDUM



PRODUCT SPECIFICATIONS

Enhanced Connected Bottle Filler & Bi-Level ADA Cooler Refrigerated Stainless High Capacity Lead Drop Down Wrapper. Chilling Capacity of 8.0 GPH (gallons per hour) of 50° F drinking water, based on 80° F inlet water and 90° F ambient, per ASHRAE 18 testing. Features shall include Antimicrobial*, Automatic Filter Status Reset, Cloud Connected Device, Energy Savings, Chilled Water, FillSafe™, Filtered, Green Ticker™, Hands Free, Laminar Flow, Visual Filter Monitor, Real Drain, Quick Filter Change, Alcove Light. Furnished with Flexi-Guard® Safety Bubbler. Electronic Bottle Filler Sensor with Electronic Front and Side Bubbler Pushbar activation. Product shall be Wall Mount (On Wall), for Indoor applications, serving 2 station(s). Unit shall be certified to UL 399 and CAN/CSA C22.2 No. 120.



Special Features:	Antimicrobial, Automatic Filter Status Reset, Cloud Connected Device, Energy Savings, Chilled Water, FillSafe™, Filtered, Green Ticker™, Hands Free, Laminar Flow, Visual Filter Monitor, Real Drain, Quick Filter Change, Alcove Light
Finish:	Stainless Steel (S)
Power:	115V/60Hz
Bubbler Style:	Flexi-Guard® Safety Bubbler
Activation by:	Electronic Bottle Filler Sensor with Electronic Front and Side Bubbler Pushbar
Mounting Type:	Wall Mount (On Wall)
Chilling Capacity*:	8.0 GPH
Full Load Amps	5
Rated Watts:	370
Dimensions (L x W x H):	36-3/4" x 19" x 39-1/2"
Approx. Shipping Weight:	106 lbs.
Installation Location:	Indoor
No. of Stations Served:	2
*Based on 80° F inlet water & 90° F ambient air temp for 50° F chilled drinking water.	

Additional Finishes: Arctic White (A)
Midnight Black (M)

Included with Product: Bottle Filler,
Water Cooler,
Filter

Ships in one box.
A Century of Tradition and Quality. For more than 100 years, Elkay has been making innovative products and providing exceptional customer care. We take pride in offering plumbing products that make life easier, inspire change and leave the world a better place.



Special Note: Requires VERSATILEBFKIT accessory to move the bottle filler to the left side. plumbSMART Gateway and Account required for cloud connection.

COOLING SYSTEM

- Compressor: Hermetically-sealed, reciprocating type, single phase. Sealed-in lifetime lubrication.
- Condenser: Fan cooled, copper tube with aluminum fins. Fan motor is permanently lubricated.
- Cooling Unit: Combination tube-tank type. Continuous copper tubing with is fully insulated with EPS foam that meets UL requirements for self-extinguishing material.
- Refrigerant Control: Refrigerant R-134a is controlled by accurately calibrated capillary tube.
- Temperature Control: Easily accessible enclosed adjustable thermostat is factory preset. Requires no adjustment other than for altitude requirements.

PRODUCT COMPLIANCE

- ADA & ICC A117.1
- ASME A112.19.3/CSA B45.4
- CAN/CSA C22.2 No. 120
- FCC & ISED
- GreenSpec®
- NSF/ANSI 42, 53, 61 (Q≤1), 372 (lead free), & 401
- UL 399



This Zurn Elkay product has a certified Environmental Product Declaration (EPD) that complies with an independently verified life cycle assessment (LCA). Visit [Product Declarations and Certifications](#) for more information.

Complies with ADA & ICC A117.1 accessibility requirements when installed according to the requirements outlined in these standards. Installation may require additional components and/or construction features to be fully compliant. Consult the local Authority Having Jurisdiction if necessary.

[Installation Instructions \(PDF\) - 2000001134](#)

5 Year Limited Warranty on the refrigeration system of the unit. Electrical components and water system are warranted for 12 months from date of installation. **Warranty pertains to drinking water applications only. Non-drinking water applications are not covered under warranty.**

[Warranty \(PDF\)](#)

PART: _____ QTY: _____

PROJECT: _____

CONTACT: _____

DATE: _____

NOTES: _____ APP

ROVAL: _____

In keeping with our policy of continuing product improvement, Elkay reserves the right to change product specifications without notice. Please visit [elkay.com](#) for the most current version of Elkay product specification sheets. This specification describes an Elkay product with design, quality, and functional benefits to the user. When making a comparison of other producers' offerings, be certain these features are not overlooked.

Features	
<ul style="list-style-type: none"> Drop-down wrapper provides easy access to filter from front and side of cooler for convenient and efficient filter change in under a minute 	<ul style="list-style-type: none"> The included 6,000-gallon filter is tested and certified to NSF 42, 53 and 401 for lead, microplastics, Class 1 particulate, chlorine taste and odor reduction
<ul style="list-style-type: none"> Connected dashboard lets facility managers monitor filter status across all units, making it easier to plan and anticipate filter replacements 	<ul style="list-style-type: none"> Schedule flushing events from your desktop, with automatic record-keeping to ensure compliance and safety
<ul style="list-style-type: none"> Save time and effort by viewing Bottles Saved across all units in the building or campus 	<ul style="list-style-type: none"> Understand the volume of water consumed vs wasted at a glance, across all connected units
<ul style="list-style-type: none"> Touchless, sensor activation (bottle filler) designed for easy use; easy-to-operate push-bar activation (bubbler) 	<ul style="list-style-type: none"> Hermetically sealed refrigeration system provides chilled water
<ul style="list-style-type: none"> Fill rate is 1.1 GPM. Laminar flow provides clean fill with minimal splash. Real drain system eliminates standing water 	<ul style="list-style-type: none"> Intuitive series of blue LED filter status lights accurately displays filter capacity, providing peace of mind to all users that system is properly filtering contaminants
<ul style="list-style-type: none"> System automatically recognizes new filter and updates LED lights back to blue 	<ul style="list-style-type: none"> Green Ticker™ informs user of number of 20 oz. plastic water bottles saved from waste
<ul style="list-style-type: none"> Key plastic components are manufactured with silver ion antimicrobial agent helping to provide clean, stain- and odor-free surfaces 	<ul style="list-style-type: none"> Low-energy LED light encourages use, assists with filling dark bottles and illuminates in dark hallways
<ul style="list-style-type: none"> One-box packaging so the cooler and bottle filler ship together 	<p>*Antimicrobial claims are in reference to components manufactured antimicrobial agents, helping to provide clean, stain- and odor-free surfaces.</p>

Optional Accessories		
51600C	WaterSentry® Lead + Microplastics NSF/ANSI Certified 6000 Gal 12 Month Filter Spec Sheet (PDF)	
LKAPREZL	Cane Apron for EZ Gray Spec Sheet (PDF)	
STLBFUP	Universal Back Panel Assembly Kit for Bi-level Coolers with Bottle Filler Spec Sheet (PDF)	
MLP200	In-wall Carrier for Bi-level On-wall Bottle Fillers Coolers & Fountains Spec Sheet (PDF)	
ZGW-LORA-W1-LTE	Zurn Gateway for Zurn Connected Products Spec Sheet (PDF)	
VERSATILEBFKIT	Cable Extension for Versatile BF Spec Sheet (PDF)	

In keeping with our policy of continuing product improvement, Elkay reserves the right to change product specifications without notice. Please visit elkay.com for the most current version of Elkay product specification sheets. This specification describes an Elkay product with design, quality, and functional benefits to the user. When making a comparison of other producers' offerings, be certain these features are not overlooked.

IMPORTANT! INSTALLER PLEASE NOTE :

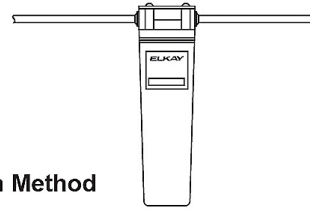
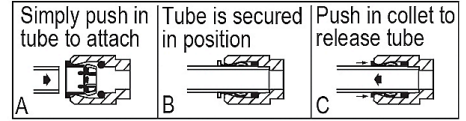
This water cooler has been designed and built to provide water to the user which has not been altered by materials in the cooler waterways. The grounding of electrical equipment such as telephone, computer, etc. to water lines is a common procedure. The grounding may be in the building but may also occur away from the building. This grounding can cause electrical feedback into a water cooler creating an electrolysis which creates a metallic taste or causes an increase in the metal content of the water. This condition is avoidable by installing the cooler using the proper materials as shown below.

NOTICE

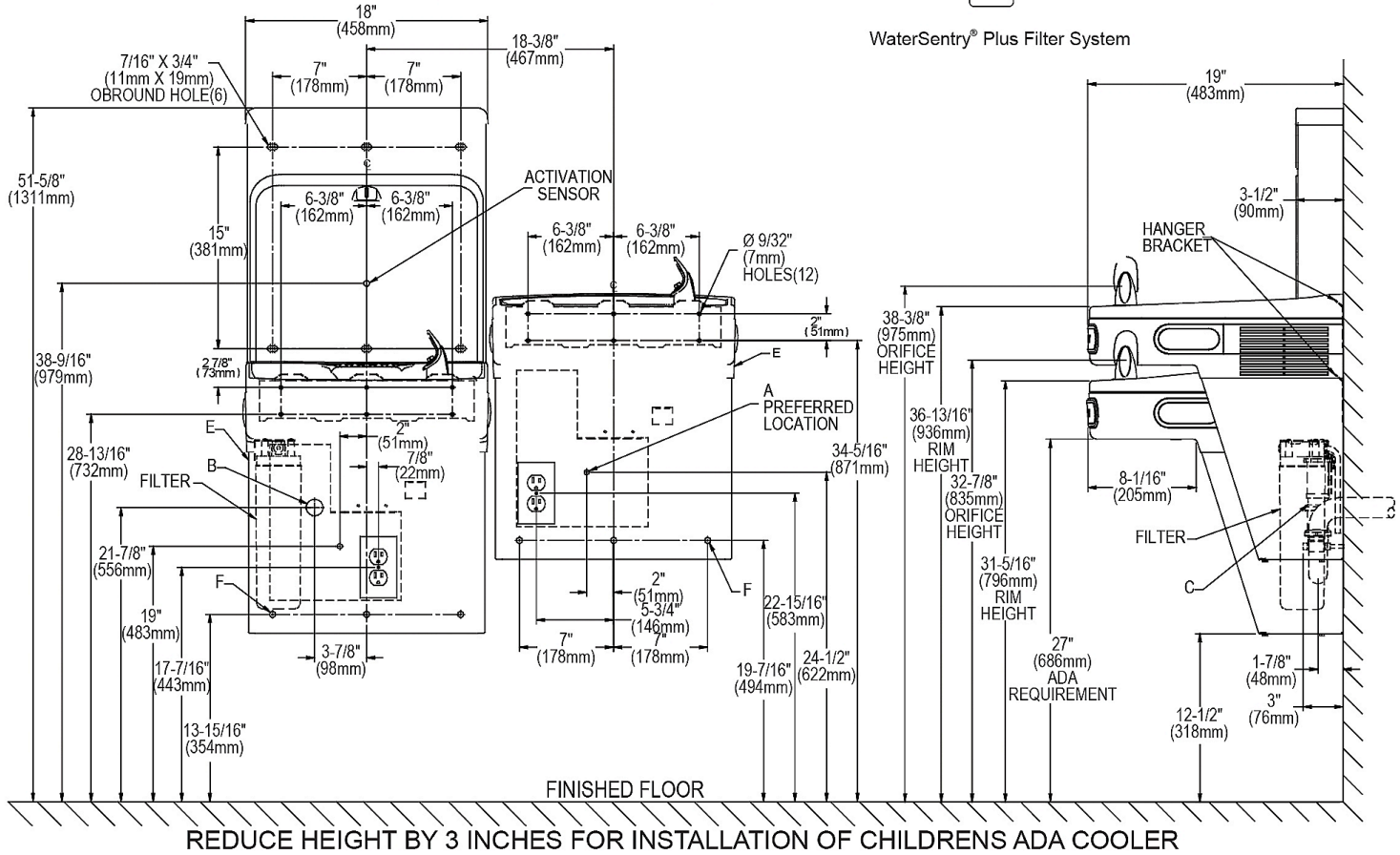
This water cooler must be connected to the water supply using a dielectric coupling. The cooler is furnished with a non-metallic strainer which meets this requirement. The drain trap which is provided by the installer should also be plastic to completely isolate the cooler from the building plumbing system.
Bottle filler unit on bracket attached to wall by 6 holes (as shown). Water and electrical will connect through pre-punched hole in basin.

Optional Reverse (Hi-Low) Installation Method

OPERATION OF QUICK CONNECT FITTINGS



Pushing tube in before pulling it out helps to release tube



REDUCE HEIGHT BY 3 INCHES FOR INSTALLATION OF CHILDRENS ADA COOLER

LEGEND:

- A = Recommended Water Supply location. Shut-off Valve (not furnished) to accept 3/8" O.D. unplated copper tube. Up to 3" (76mm) maximum out from wall.
 - B = Recommended Waste Outlet location. To accommodate 1-1/2" nominal drain. Drain stub 2" (51mm) out from wall.
 - C = 1-1/2" Trap (not furnished).
 - D = Electrical Supply (3) Wire Recessed Box Duplex Outlet.
 - E = Insure proper ventilation by maintaining 6" (152mm) minimum clearance from cabinet louvers to wall.
 - F = 7/16" (11mm) Bolt Holes for fastening to wall.
- Note : New Installations Must Use Ground Fault Circuit Interrupter (GFCI).

In keeping with our policy of continuing product improvement, Elkay reserves the right to change product specifications without notice. Please visit elkay.com for the most current version of Elkay product specification sheets. This specification describes an Elkay product with design, quality, and functional benefits to the user. When making a comparison of other producers' offerings, be certain these features are not overlooked.