



Office of the City Manager

PUBLIC HEARING

June 11, 2019

To: Honorable Mayor and Members of the City Council
From: Dee Williams-Ridley, City Manager
Submitted by: Phillip L. Harrington, Director, Department of Public Works
Subject: FY 2020 Street Lighting Assessments

RECOMMENDATION

Conduct a public hearing and upon conclusion adopt two Resolutions confirming the assessments for Berkeley Street Lighting Assessment District No. 1982-1 and Street Lighting Assessment District 2018, approving the Engineer's Reports, and authorizing the levying and collection of assessments in Fiscal Year 2020.

FISCAL IMPACTS OF RECOMMENDATION

On May 14, 2019, Council adopted Resolutions No. 68,878-N.S. and No. 68,879-N.S. declaring the City's intent to levy and collect FY 2020 assessments for Berkeley Street Lighting Assessment District No. 1982-1 and Street Lighting Assessment District 2018, collectively referred to herein as the Districts; preliminarily approving the Engineer's Reports for the Districts; and setting a public hearing for the June 11, 2019 Council Meeting.

The attached Resolutions confirm the assessments, approve the final Engineer's Reports, and authorize the levying and collection of the assessment in Fiscal Year 2020. If the Resolutions are adopted, the revenue and expenditure budgets described below will be appropriated, and the final Assessor's tax rolls will be prepared and filed with the County Auditor's Office allowing the assessments to be included in the FY 2020 tax roll. After collection by the County the total amount of the assessment minus a county collection fee would be paid to the City of Berkeley and the revenue posted in the Street Light Assessment District Fund (Fund 142).

The City's Street Lighting Program in FY 2020 has projected expenditures in the amount of \$2,523,459. FY 2020 revenue from proposed street lighting assessment is estimated at \$1,918,446 resulting in a shortfall of approximately \$605,013. This deficit can be covered by the projected available fund balance in the Street Light Assessment District Fund. A summary of FY 2020 revenue, expenditures and fund balances for the assessment districts is shown in the Table 1, below.

Table 1:

Estimated Beginning Balance (Fund 142)	\$ 860,733
Street Lighting Program Expenditures	\$ 2,523,459
Projected Assessments	
Street Light Assessment District 1982-1	\$ 1,394,780
Street Light Assessment District 2018	\$ 556,843
County Collection Fee (1.7%)	\$ (33,178)
Projected Net Assessments	\$ 1,918,446
Deficit	\$ (605,013)
Estimated End Balance (Fund 142)	\$ 255,720

Proposed assessment rates for the Districts are summarized in the following sections of this report.

Street Lighting Assessment District No. 1982-1

The proposed rates for Assessment District 1982-1 are incorporated into the Engineer's Report (Attachment 3) and reflect no changes to assessment rates in FY 2020.

Accordingly, this action is exempt from the notice, protest, and hearing requirements of State Proposition 218 as set forth in Government Code Section 53753.5 (Article XIII D, Sec. 5). Any increase or change in formula for the assessments would make the annual assessment subject to procedures and approval process of Proposition 218 (Government Code Section 53750-53754). Table 2, below details prior year and proposed FY 2020 assessment rates for this district:

Table 2:

Rate Category	Assessment 2018-2019	Proposed Assessment 2019-2020	Unit
Residential and Institutional	\$ 0.0108	\$ 0.0108	BSF ¹
Industrial and Utility	\$ 0.0216	\$ 0.0216	BSF
Commercial	\$ 0.0432	\$ 0.0432	BSF

Street Lighting Assessment District 2018

The assessment for the 2018 District is subject to an annual adjustment equal to the annual change in the Bay Area Consumer Price Index (CPI), up to a maximum of 3%

¹ Building Square Footage (BSF)

per year. The 4.5% CPI increase for the annual period ending on December 2018 exceeds the 3% threshold, therefore the proposed annual adjustment for the 2018 Assessment in FY 2020 is 3%. This adjustment is incorporated into the Engineer's Report (Attachment 4). As authorized by voters this adjustment may be calculated based upon the sum of the 2018 Assessment and the 1982 Assessment. The inclusion of the 1982 Assessment in the adjustment calculation for the 2018 Assessment results in effective rate increases of 10 to 11 percent depending on rate category. These rate increases and the methodology used in their calculation are in accordance with the voter approved measure; therefore the proposed adjustments are exempt from the notice, protest, and hearing requirements of State Proposition 218 as set forth in Government Code Section 53753.5 (Article XIII D, Sec. 5). Table 3, below, details prior year and proposed FY 2020 assessment rates for this district. A detailed calculation of the annual adjustment and the corresponding rate increases are included in the Engineer's Report.

Table 3:

Assessment Rate Schedule			
Rate Category	Assessment 2018-2019	Proposed Assessment 2019-2020	Unit
Residential			
Single Family	\$ 11.17	\$ 12.33	parcel
Multi-Family<5 units	\$ 8.94	\$ 9.86	unit
Multi-Family 5 or more units	\$ 6.70	\$ 7.40	unit
Condominium	\$ 8.94	\$ 9.86	parcel
Mobile Home	\$ 5.59	\$ 6.16	unit
Multiple SFR on parcel	\$ 11.17	\$ 12.33	unit
Non-Residential			
General Commercial	\$ 167.55	\$ 184.88	acre
Industrial / Warehouse	\$ 16.76	\$ 18.49	acre
Auto Repair	\$ 111.70	\$ 123.25	acre
Hotel / Motel / Boarding	\$ 111.70	\$ 123.25	acre
Hospital	\$ 69.81	\$ 77.03	acre
Retirement Home	\$ 13.96	\$ 15.41	acre
School / Day Care	\$ 25.13	\$ 27.73	acre
Medical / Dental / Vet	\$ 139.63	\$ 154.07	acre
Church	\$ 8.38	\$ 9.24	acre
Mortuary	\$ 2.79	\$ 3.08	acre
Recreational	\$ 27.93	\$ 30.81	acre
Parking / Transportation	\$ 55.85	\$ 61.63	acre
Mini Storage	\$ 8.38	\$ 9.24	acre
Office	\$ 41.89	\$ 46.22	acre

Bank	\$ 139.63	\$ 154.07	acre
Park / Open Space / Agriculture	\$ 0.56	\$ 0.62	acre
Vacant	<i>Not assessed</i>		

CURRENT SITUATION AND ITS EFFECTS

Historically, the Street Lighting Assessment District 1982-1 rates have failed to generate sufficient revenue to sustain operations of the City’s Street Lighting Program (Program). For a period beginning in FY 2006 the General Fund (011) subsidized the City’s Street Light Assessment District Fund (142), but the subsidy was discontinued as part of a City-wide budget balancing measure in FY 2018, when the General Fund faced a deficit. Subsequently, in FY 2018 the City used available Street Light Assessment District Fund balance to cover the operating deficit of the Program. To establish financial sustainability for the Program and to avoid significant reductions in service levels in the future, the City moved forward with the formation of a new district in FY 2018, Street Lighting Assessment District 2018. This district was formed separately from the 1982 District leaving that district’s structure and rates in place. Assessments for the 2018 District were first levied in FY 2019.

Allowable annual adjustments of the 2018 District assessment rates are expected to raise revenues over the coming years. Until these rates increase to a level which allows total revenues to fully cover operating expenses, the Street Light Assessment District Fund will continue to incur a deficit, and will require continued use of fund balance or transfers in from other eligible funds to offset operating deficits.

BACKGROUND

The Berkeley Street Lighting Assessment District No. 1982-1 was established under the Landscaping and Lighting Act of 1972 (Streets and Highway Code Section 22620-22631) on July 27, 1982 (Resolution No. 51,449-N.S.)². The Street Lighting Assessment District 2018 was established under the same Act on June 12, 2018 (Resolution No. 68,482-N.S.). The Act requires the City Council to hold a public hearing each year to consider adoption of an annual budget and approve changes to the Engineer’s Report. At this hearing owners of assessed properties within the district are allowed to make an oral or written protest against the annual levy.

During the course of, or upon conclusion of the public hearing, City Council may order changes in any of the matters provided in the Engineer’s Reports, including changes in improvements; zones within the assessment district; the proposed district diagram; or

² State of California legislation (Streets & Highways §22500) allows local governmental agencies to form Landscape & Lighting Maintenance Districts. A 1972 Act Landscaping and Lighting District is a flexible tool used by local government agencies to pay for landscaping, lighting and other improvements and services in public areas. It is based on the concept of assessing only those properties that benefit from improvements financed, either directly, or indirectly through increased property values.
<http://www.californiataxdata.com/pdf/1972LLact.pdf>

the proposed assessment, as long as any proposed changes are less than the proposed annual levy. With the incorporation of any changes made by Council to the Engineer's Report, it is then adopted upon supporting vote by Council confirming the diagrams, assessments, and levying assessments for the coming Fiscal Year.

The City's Engineering Division has filed the FY 2020 Engineer's Reports for the assessment districts with the City Clerk. Copies of the Engineer's Reports with FY 2020 assessments will be on file as of April 26, 2019 at the main branch of the Berkeley Public Library and at the City Clerk's Office.

The improvements to be made in these assessment districts are generally described as maintenance and/or servicing of existing and future public lighting facilities including: traffic signals; installation and construction of curbs, gutters, walls, sidewalks or paving; water, irrigation, or drainage related to operation of the public lighting facilities. The improvements and services provided support the Strategic Plan goals of creating a resilient, safe, connected, and prepared city and providing state-of-the-art, well-maintained infrastructure, amenities, and facilities.

ENVIRONMENTAL SUSTAINABILITY

The City exclusively uses LED (light emitting diode) street lighting. LED lights provide environmental benefits by reducing the level of greenhouse gases emitted; reducing level of toxic materials disposed; maximization of energy and energy cost savings; achieving the City's illumination standards; and minimizing administration costs and staff time for street light maintenance.

RATIONALE FOR RECOMMENDATION

Failure to conduct a public hearing and adopt the Resolutions would result in non-compliance of the requirements set forth in the Landscaping and Lighting Act of 1972 thus preventing the City from levying assessments in FY 2020. The District assessments are needed to establish financial sustainability for the Program and to avoid significant reductions in service

CONTACT PERSON

Phillip L. Harrington, Director, Department of Public Works, (510) 981-6303
Nisha Patel, Manager of Engineering/City Engineer, (510) 981-6406
Ricardo Salcedo, Assistant Civil Engineer, Public Works, (510) 981-6407

Attachments:

- 1: Resolution – Levy and Collection – Street Lighting Assessment District 1982-1
- 2: Resolution – Levy and Collection – Street Lighting Assessment District 2018
- 3: Engineer's Report - Street Lighting Assessment District 1982-1
- 4: Engineer's Report - Street Lighting Assessment District 2018
5. Public Hearing Notice

RESOLUTION NO. ##,###-N.S.

LEVY AND COLLECTION OF FY 2020 ASSESSMENTS FOR STREET LIGHTING
ASSESSMENT DISTRICT 1982-1

WHEREAS, the Council of the City of Berkeley adopted Resolution No. 68,878-N.S. declaring the City's intent to levy and collect assessments for FY 2020, approving the preliminary Engineer's Report, dated April 2019, for the Berkeley Lighting Assessment District 1982-1, and setting a public hearing for June 11, 2019; at a regular Council Meeting conducted in the Berkeley Unified School District Board Room located at 1231 Addison Street; and

WHEREAS, the City Clerk published notice of the public hearing 10 days prior to the public hearing in accordance with Streets and Highway Code Sections 22625, 22626, 22552, and 22553 and Government Code Section 6061 in a newspaper with general circulation; and

WHEREAS, a public hearing was held on Tuesday, June 11, 2019 at 1231 Addison Street at the regular City Council meeting; and all interested persons were afforded the opportunity to hear and be heard or file a written protest with the Clerk; and

WHEREAS, the Council considered all public comments received against the levy of an annual assessment at the same rate as was levied in FY 2019 and the assessment is in compliance with the Landscape and Lighting Act of 1972.

NOW THEREFORE, BE IT RESOLVED by the Council of the City of Berkeley that the Council approves the final Engineer's Report dated April 2019 and authorizes the levy and collection of assessments within Berkeley Street Lighting Assessment District No. 1982-1 for FY 2020. The area of Land to be assessed is located in the City of Berkeley, Alameda County.

BE IT FURTHER RESOLVED that improvements to be made in this assessment district are generally described as maintenance or servicing, or both, of existing and future public lighting facilities, including, but not limited to, traffic signals and the installation and construction of public lighting or the maintenance or servicing thereof, including but not limited to grading, clearing, removal of debris, installation and construction of curbs, gutters, walls, sidewalk or paving, or water or irrigation, drainage or operation of the public lighting facilities.

RESOLUTION NO. ##,###-N.S.

LEVY AND COLLECTION OF FY 2020 ASSESSMENTS FOR STREET LIGHTING
ASSESSMENT DISTRICT 2018

WHEREAS, the Council of the City of Berkeley adopted Resolution No. 68,879-N.S. declaring the City's intent to levy and collect assessments for FY 2020, approving the preliminary Engineer's Report, dated April 2019, for the Street Lighting Assessment District 2018, and setting a public hearing for June 11, 2019; at a regular Council Meeting conducted in the Berkeley Unified School District Board Room located at 1231 Addison Street; and

WHEREAS, the City Clerk published notice of the public hearing 10 days prior to the public hearing in accordance with Streets and Highway Code Sections 22625, 22626, 22552, and 22553 and Government Code Section 6061 in a newspaper with general circulation; and

WHEREAS, a public hearing was held on Tuesday, June 11, 2019 at 1231 Addison Street at the regular City Council meeting; and all interested persons were afforded the opportunity to hear and be heard or file a written protest with the Clerk; and

WHEREAS, the Council considered all public comments received against the levy of an annual assessment at the proposed assessment rate of TWELVE DOLLARS AND THIRTY-THREE CENTS (\$12.33) per single-family equivalent benefit unit; and

WHEREAS, the proposed annual assessment adjustment is in accordance with formulas established when the assessment district was formed and the assessment is in compliance with the provisions of Proposition 2018 (Article XIII D of the California Constitution) and the Landscape and Lighting Act of 1972.

NOW THEREFORE, BE IT RESOLVED by the Council of the City of Berkeley that the Council approves the final Engineer's Report dated April 2019 and authorizes the levy and collection of assessments within Street Lighting Assessment District 2018 for FY 2020. The area of Land to be assessed is located in the City of Berkeley, Alameda County.

BE IT FURTHER RESOLVED that improvements to be made in this assessment district are generally described as maintenance or servicing, or both, of existing and future public lighting facilities, including, but not limited to, traffic signals and the installation and construction of public lighting or the maintenance or servicing thereof, including but not limited to grading, clearing, removal of debris, installation and construction of curbs, gutters, walls, sidewalk or paving, or water or irrigation, drainage or operation of the public lighting facilities.

CITY OF BERKELEY

STREET LIGHTING ASSESSMENT DISTRICT 1982-1

ENGINEER'S REPORT

on the
Levy of an Assessment
for
Fiscal Year 2020

April 2019

Prepared by

RICARDO SALCEDO, PE
CITY OF BERKELEY
DEPARTMENT OF PUBLIC WORKS
ENGINEERING DIVISION

TABLE OF CONTENTS

BACKGROUND3

PLANS AND SPECIFICATIONS.....3

METHODOLOGY3

ESTIMATE OF COSTS3

DIAGRAM4

ASSESSMENT5

LIST OF TABLES

Table 1- FY 2020 Budget Summary.....4

BACKGROUND

By its Resolution 51,230 N.S., adopted April 6, 1982, the Berkeley City Council initiated proceedings under the provisions of Division 15, Part 2, of the California Streets and Highways Code, entitled “Landscaping and Lighting Act of 1972”. The required public hearing was held on July 20, 1982, at which time the Council ordered the improvements and the formation of the assessment district, and confirmed the diagram and assessment. The district so formed was designated the “City of Berkeley Street Lighting Assessment District 1982-1”. Assessments were levied for the 1983 through 2019 fiscal years.

This report was prepared and filed pursuant to Division 15, Part 2, of the California Streets and Highway Code Section 2250, and is exempt from Government Code Section 53753 since the proposed assessment for FY 2020 will not be increased.

PLANS AND SPECIFICATIONS

The plans and specifications for this assessment district were prepared and filed with the Engineer’s Report for the 1983 fiscal year, which plans and specifications are incorporated herein by this reference thereto.

METHODOLOGY

The benefit to individual parcels within the Assessment District was established in 1982 based on the median light intensity a parcel receives. Parcel’s Land Use Code (LUC) is used to categorize the parcels. The assessment is calculated by multiplying the building square footage on the parcel times the rate of its category. The rate structure has three categories: 1) Residential and Institutional, 2) Industrial, 3) Commercial. An industrial area has twice the median light intensity of a residential area and a commercial area has four times the median light intensity; therefore, the rates are two and four times higher, respectively, than the residential rate. The rates are:

Residential and Institutional	\$0.0108/Building Square Footage
Industrial and Utility	\$0.0216/Building Square Footage
Commercial	\$0.0432/Building Square Footage

ESTIMATE OF COSTS

The improvements to be made in this assessment district are generally described as the maintenance or servicing, or both, of existing and future public lighting facilities, including, but not limited to, traffic signals and the installation and construction of public lighting or the maintenance or servicing thereof, including but not limited to grading, clearing, removal of debris, installation and construction of curbs, gutters, walls, sidewalk or paving, or water or irrigation, drainage or electrical facilities.

A summary budget for fiscal year 2020 for the maintenance of the improvements is provided below. A more detailed breakdown of costs is included as an appendix.

Table 1- FY 2020 Budget Summary

Estimated Beginning Balance Street Lighting Fund (142)	\$ 860,733
Costs	
Personnel Costs	\$ 923,594
Non-Personnel Costs	
Supplies, etc...	\$ 99,211
Debt Service	\$ 370,451
PG&E Electric Costs	\$ 350,647
Infrastructure/Streets	\$ 0
Deferred Capital Maintenance	\$ 416,608
Indirect Costs	\$ 112,971
Operating Transfer Out	\$ 12,120
Internal Services	\$ 237,857
Subtotal Non-Personnel Costs	\$ 1,599,865
Total Costs	\$ 2,523,459
Assessments	
Street Light Assessment District 1982-1	\$ 1,394,780
Street Light Assessment District 2018	\$ 556,843
County Collection Fee (1.7%)	\$ (33,178)
Net Assessment	\$ 1,918,446
Deficit	\$ (605,013)
Estimated End Balance Street Lighting Fund (142)	\$ 255,720

DIAGRAM

The diagram for this assessment district was prepared and filed with the Engineer's Report for the 1983 fiscal year.

ASSESSMENT

Except as described below, the assessments to be made against the assessable lots and parcels of land within this assessment district are contained in the "2020 Assessment Roll" for this district, which roll is filed herewith and incorporated herein by this reference thereto.

Said assessment roll filed herewith is based on data contained in the City's 2019 Library Tax tape and the County Assessor's 2019 maps. In the event that data contained in the 2019 Library Tax tape and 2019 maps, when issued, conflict therewith, assessments to be made against the affected parcels for this 2020 Fiscal Year shall be based upon the revised data contained in said 2020 tape and 2020 maps.

Dated: _____, 2019

Ricardo Salcedo, RCE 83969
Engineer of Work

Filed in the office of the City Clerk of the City of Berkeley, Alameda County, California,
this _____ day of _____, 2019

Mark Numainville
City Clerk

Filed in the office of the County Auditor-Controller of Alameda County, California,
this _____ day of _____, 2019.

Melissa Wilk
County Auditor-Controller

DETAIL OF STREET LIGHTING COSTS IN FY 2020

	Personnel	Supplies, etc	Debt Service	PGE Electric	Infrastructure/ Streets	Deferred Capital/ Maintenance	Indirect Costs	Operating Transfer Out	Internal Services	TOTALS
Customer Service - 311									\$ 30,483.00	\$ 30,483.00
Revenue Collection	\$ 18,654.00						\$ 2,205.00			\$ 20,859.00
Financial Admin Services								\$ 364.00		\$ 364.00
Corp Yard Administration								\$ 1,091.00		\$ 1,091.00
General Engineering								\$ 121.00		\$ 121.00
Communication System Maintenance		\$ 1,000.00								\$ 1,000.00
Street Lighting Maintenance	\$904,940.00	\$ 85,471.00	\$370,451.00	\$342,493.00		\$ 416,608.00	\$110,766.00	\$ 10,544.00	\$191,238.00	\$2,432,511.00
Traffic Signal Maintenance										\$ -
Corp Yard Maintenance		\$ 12,740.00		\$ 8,154.00					\$ 16,136.00	\$ 37,030.00
TOTALS	\$923,594.00	\$ 99,211.00	\$370,451.00	\$350,647.00	\$ -	\$ 416,608.00	\$112,971.00	\$ 12,120.00	\$237,857.00	\$2,523,459.00

CITY OF BERKELEY

**STREET LIGHTING
ASSESSMENT DISTRICT 1982-1**

**FY 2020 Assessment Roll
Listed by
Assessor's Parcel Number**

April 2019

Engineer's Report with Full Listing of Assessments by Assessor's Parcel Number is available at the following locations on or after April 26, 2019:

- City Clerk's Office, 2180 Milvia Street, Berkeley, CA 94704
- Main Berkeley Library, Reference Desk, 2090 Kittredge Avenue, Berkeley, CA 94704
- Public Works Engineering Division, 1947 Center Street, 4th Floor, Berkeley, CA 94704

Prepared by

RICARDO SALCEDO, PE
CITY OF BERKELEY
DEPARTMENT OF PUBLIC WORKS
ENGINEERING DIVISION

CITY OF BERKELEY

**STREET LIGHTING
ASSESSMENT DISTRICT 1982-1**

**FY 2020 Assessment Roll
Listed by
Street Address**

April 2019

Engineer's Report with Full Assessments Roll by Street Address is available at the following locations on or after April 26, 2019:

- City Clerk's Office, 2180 Milvia Street, Berkeley, CA 94704
- Main Berkeley Library, Reference Desk, 2090 Kittredge Avenue, Berkeley, CA 94704
- Public Works Engineering Division, 1947 Center Street, 4th Floor, Berkeley, CA 94704

Prepared by

RICARDO SALCEDO, PE
CITY OF BERKELEY
DEPARTMENT OF PUBLIC WORKS
ENGINEERING DIVISION

CITY OF BERKELEY
ASSESSMENT DISTRICT NO. 1982-1
FY 2020 ASSESSMENT SUMMARY

Type	Rate	Assessment
Residential*	0.0108	\$729,633.54
Commercial	0.0432	\$501,135.00
Industrial**	0.0216	\$164,011.58
Total		\$1,394,780.12

- * Includes Institutional and No Rate
- ** includes Utility

CITY OF BERKELEY

STREET LIGHTING ASSESSMENT DISTRICT 2018

ENGINEER'S REPORT

on the
Levy of an Assessment
for
Fiscal Year 2020

April 2019

Prepared by

RICARDO SALCEDO, PE
CITY OF BERKELEY
DEPARTMENT OF PUBLIC WORKS
ENGINEERING DIVISION

TABLE OF CONTENTS

INTRODUCTION.....3

PLANS AND SPECIFICATIONS.....4

FISCAL YEAR 2020 BUDGET5

METHOD OF ASSESSMENT6

DISCUSSION OF BENEFIT6

SPECIAL BENEFIT6

GENERAL VERSUS SPECIAL BENEFIT7

QUANTIFICATION OF GENERAL BENEFIT.....8

METHOD OF ASSESSMENT8

ANNUAL ASSESSMENT INCREASE.....12

DURATION OF ASSESSMENT12

APPEALS AND INTERPRETATION12

ASSESSMENT STATEMENT13

DIAGRAM15

LIST OF TABLES

Table 1- FY 2020 Budget Summary.....5

Table 2 – Single-Family Equivalent Rates9

Table 3 – Summary of SFEs by Category10

Table 4 – Assessment Rate Schedule.....11

LIST OF FIGURES

Figure 1 – Assessment Diagram15

INTRODUCTION

The City of Berkeley (“City”) provides maintenance and servicing of certain publicly-owned streetlights throughout the City. In order to fund the installation, maintenance and operation (the “Services”) of these improvements (“Improvements”), the City formed a city-wide streetlight assessment district in 1982. The district so formed was designated the “City of Berkeley Street Lighting Assessment District 1982-1” (SLAD 1982-1) and assessments have been levied for the 1983 through 2019 fiscal years.

The Street Lighting Assessment District 1982-1 rates have never been increased above their initial rates and historically have failed to generate sufficient revenue to sustain operations of the City’s Street Lighting Program (Program). For a period beginning in FY 2006 the General Fund (011) subsidized the City’s Street Lighting Fund (142), but the subsidy was discontinued as part of a City-wide budget balancing measure in FY 2018, when the General Fund faced a deficit. Subsequently, in FY 2018 the City used available Street Lighting Fund balance to cover the operating deficit of the Program.

To establish financial sustainability for the Streetlight Fund and avoid significant reductions in service levels, the City moved forward with the formation a new district, Street Lighting Assessment District 2018 (“SLAD 2018” or “District”). The District would be formed separately and leave the 1982 assessment structure in place. By Resolution 68,333 N.S., adopted February 13, 2018, the Berkeley City Council initiated proceedings for the formation of the District pursuant to the provisions of Division 15, Part 2, of the California Streets and Highways Code, entitled “Landscaping and Lighting Act of 1972” (Act). Balloting procedures in accordance with Proposition 218 (Articles XIII C and XIII D of the California Constitution) and pertinent statutes, were adopted by Resolution 68,376-N.S. Following tabulation of returned ballots and confirmation of voter approval, Council adopted Resolution 68,482-N.S., dated June 12, 2018, accepting the ballot tabulation results, formally establishing the District, and ordering that assessments be levied for Fiscal Year (FY) 2019.

PLANS AND SPECIFICATIONS

The work and Improvements proposed to be undertaken by the City and the cost paid from the levy of the annual assessment provide special benefit to assessor parcels within the District. Consistent with the Act, the Improvements are generally described as follows:

- The installation, maintenance, and servicing of local streetlights in close proximity to certain lots and parcels which provide a direct special benefit to such lots or parcels.
- The installation, maintenance, and servicing of peripheral streetlight structures which provide a special benefit to all the assessable parcels within the District whether or not such parcels are in close proximity to such lighting.
- The installation or construction of public lighting facilities, or the acquisition of any new improvements.

Plans and Specifications for the Improvements for the District are voluminous and are not bound in this Report but by this reference are incorporated and made a part of this Report. The Plans and Specifications are on file in the office of the Public Works Director where they are available for public inspection.

Article XIII D of the California Constitution defines "maintenance and servicing expenses" as, "the cost of rent, repair, replacement, rehabilitation, fuel, power, electrical current, care and supervision necessary to properly operate and maintain a permanent public improvement". The Improvement funding includes, but is not limited to, the removal, repair, replacement or relocation of light standards, poles, bulbs, fixtures and appurtenances, electrical energy, supplies, engineering and incidental costs relating to the maintenance and servicing of the local lighting improvements benefiting the parcels within the District.

The Improvements to be maintained and serviced within the District are to be part of the local streetlight system of the City of Berkeley that confers special benefit to the District's parcels. The specific location of local streetlight Improvements within the City can be found in the Streetlight Condition Assessment by Tanko Lighting, which is on file in the office of the Director of Public Works, where it is available for public inspection.

FISCAL YEAR 2020 BUDGET

A summary budget for FY 2020 for the maintenance of the Improvements is provided below as Table 1.

Table 1- FY 2020 Budget Summary

Estimated Beginning Balance Street Lighting Fund (142)	\$	860,733
Costs		
Personnel Costs	\$	923,594
Non-Personnel Costs		
<i>Supplies, etc...</i>	\$	99,211
<i>Debt Service</i>	\$	370,451
<i>PG&E Electric Costs</i>	\$	350,647
<i>Infrastructure/Streets</i>	\$	0
<i>Deferred Capital Maintenance</i>	\$	416,608
<i>Indirect Costs</i>	\$	112,971
<i>Operating Transfer Out</i>	\$	12,120
<i>Internal Services</i>	\$	237,857
Subtotal Non-Personnel Costs	\$	1,599,865
Total Costs	\$	2,523,459
Assessments		
Street Light Assessment District 1982-1	\$	1,394,780
Street Light Assessment District 2018	\$	556,843
County Collection Fee (1.7%)	\$	(33,178)
Net Assessment	\$	1,918,446
Deficit	\$	(605,013)
Estimated End Balance Street Lighting Fund (142)	\$	255,720

METHOD OF ASSESSMENT

This section of the Engineer's Report includes an explanation of the benefits derived from the installation, maintenance and servicing of the Improvements throughout the District and the Assessment methodology used to apportion the total Assessment to properties within the District.

The District consists of all assessor parcels within the boundaries as defined by the Assessment Diagram and the parcels identified by the Assessor Parcel Numbers listed with the levy roll included with this Report. The parcel list includes all assessable privately and publicly owned parcels within the boundaries. The method used for apportioning the Assessment is based on the proportional special benefits to be derived by the properties in the District over and above general benefits conferred on real property or to the public at large. The apportionment of special benefit is a two-step process: the first step is to identify the types of special benefit arising from the Improvements and the second step is to allocate the Assessments to property based on the estimated relative special benefit for each type of property.

DISCUSSION OF BENEFIT

In summary, the Assessments can only be levied based on the special benefit to property. This benefit is received by property over and above any general benefits. Moreover, such benefit is not based on any one property owner's use of the Improvements or a property owner's specific demographic status. With reference to the requirements for Assessments, Section 22573 of the Act states:

The net amount to be assessed upon lands within an assessment district may be apportioned by any formula or method which fairly distributes the net amount among all assessable lots or parcels in proportion to the estimated benefits to be received by each such lot or parcel from the improvements.

Proposition 218, as codified in Article XIII D of the California Constitution, has confirmed that Assessments must be based on the special benefit to property:

No assessment shall be imposed on any parcel which exceeds the reasonable cost of the proportional special benefit conferred on that parcel.

SPECIAL BENEFIT

Streetlighting is an optional improvement, not required by state or federal law, that is an enhancement over and above requisite infrastructure, and thus is a special benefit. The majority of the benefits of the streetlights are received by the benefited property, with a small portion of the benefits received by the general public on major streets

only. This portion received by the general public is captured and quantified in the following section.

Improved Visibility and Safety

Well maintained, effective street lighting provides special benefit to proximate parcels, within range of the light, because it allows for safer and improved use of the property in the evenings, early morning, and at night. Street lighting provides special benefit because it increases neighborhood safety and, at least indirectly, reduces the likelihood of crime on the proximate parcels. Over time, the Improvements continue to confer a particular and distinct special benefit upon parcels within the District because of the nature of the Improvements. The proper maintenance of the streetlights and appurtenant facilities increases visibility and local human presence and, in many situations, helps reduce property-related crimes, especially vandalism, against assessed properties in the District.

Improved Access, Navigation, and Traffic Safety

Well maintained, effective street lighting enhances ingress, egress and accessibility of all forms to the assessed parcels in the evening, early morning, and at night by increasing visibility. Improved visibility also helps prevent local automobile, bicycle, and pedestrian traffic accidents related to the assessed parcels. This benefit includes a reduction in accidents during non-daylight hours.

Improved Community Character and Vitality

Well maintained, effective street lighting promotes evening and nighttime social interaction of residents and customers of businesses and industry. This creates a positive atmosphere and enhanced community image in the evening and at night for the assessed parcels.

All of the above-mentioned items also contribute to a specific enhancement to each of the parcels within the District. The proximate street lights make each parcel safer, more visible, more accessible, more useful, more valuable and more desirable; and this further strengthens the basis of these Assessments.

GENERAL VERSUS SPECIAL BENEFIT

The proceeds from the Assessments are used to fund the described Improvements and increased levels of maintenance to the other City facilities that serve and benefit the properties in the District. In absence of the Street Lighting Assessment District 2018, such Improvements would not be properly maintained. Therefore, the District's purpose is to ensure that the necessary and beneficial public facilities for property in the District are properly maintained, operated and repaired over time. The Assessments will ensure that street lighting and associated improvements within and adjacent to the District are functional, well maintained and effective. These public resources directly benefit the property in the District and will confer distinct and special benefits to the properties within the District.

The Improvements and Services are specifically designed, located and created to provide additional and improved resources for property inside the District and not the public at large although the Improvements maintained by the Services may be available to the general public. Other properties that are outside the District do not enjoy the unique proximity and other special benefit factors described previously. These Improvements and Services are of special benefit to properties located within the District because they provide a direct advantage to properties in the District that would not be provided in the absence of the Assessments. Any general benefits to surrounding properties outside of the Assessment District, if any, are collateral and conferred concomitantly.

QUANTIFICATION OF GENERAL BENEFIT

Although the analysis used to support these assessments concludes that the benefits are solely special, as described above, consideration is made for the suggestion that a portion of the benefits are general. General benefits cannot be funded by these assessments. The funding for general benefits must come from other sources.

The maintenance and servicing of these Improvements is also partially funded, directly and indirectly, from other sources, including the City of Berkeley, Alameda County, and the State of California. This funding comes in the form of grants, development fees, special programs, and general funds, as well as direct maintenance and servicing of facilities (e.g. curbs, gutters, streets, drainage systems, etc.).

A detailed calculation, separation, and quantification of general benefits and of the current benefit contribution from the City is included in the Engineer's Report for Fiscal Year 2018-19. The 2018-19 Engineer's Report concludes :the total general benefit is liberally quantified at 3.0%, which is more than offset by the total non-assessment contribution toward general benefit of 28%. In other words, funding from other sources more than compensates for general benefits received by the properties within the Assessment District.

METHOD OF ASSESSMENT

The method used for apportioning the Assessment is based on the proportional special benefits to be received by the properties in the District over and above general benefits conferred on real property or to the public at large. The special benefit factors considered are as follows:

- Improved visibility and safety
- Improved access, navigation and traffic safety
- Improved community character and vitality

Traffic generated to and from a particular parcel is used as the basis to quantify the special benefits received by each parcel. This is used because the amount of traffic generated by a parcel is directly proportional to the relative quantity of benefits it receives. The calculations, described in detail in the Fiscal Year 2018-2019 Engineer's Report, arrive at single-family equivalent ("SFE") rates for each category of parcel. The

SFE rate for each rate category is a relative measure of the special benefit received by each parcel category. It is based on average daily trips¹ adjusted by a darkness factor which accounts for non-operational hours of non-residential parcels. Each rate category is assigned an SFE rate using the following formula.

$$\frac{ADT \times \text{Darkness Factor}}{ADT \text{ for SFR}} = \text{SFE Rate}$$

Where:

- ADT = Average Daily Trips for each parcel category
- ADT for SFR = ADT for single-family residential, which is used as a baseline figure for SFE rate
- SFE Rate = SFEs per unit shown (parcel, [living] units, or acre)

The results of these calculations are summarized in Table 2.

Table 2 – Single-Family Equivalent Rates

Rate Category	ADT	Darkness Factor	Adj ADT	SFE Rate	Unit
Residential					
Single Family	10	1	10	1.00	parcel
Multi-Family<5 units	8	1	8	0.80	unit
Multi-Family 5 or more units	6	1	6	0.60	unit
Condominium	8	1	8	0.80	parcel
Mobile Home	5	1	5	0.50	unit
Multiple SFR on parcel	10	1	10	1.00	unit
Non-Residential					
General Commercial	600	0.25	150	15.00	acre
Industrial / Warehouse	60	0.25	15	1.50	acre
Auto Repair	400	0.25	100	10.00	acre
Hotel / Motel / Boarding	200	0.5	100	10.00	acre
Hospital	250	0.25	62.5	6.25	acre
Retirement Home	50	0.25	12.5	1.25	acre
School / Day Care	90	0.25	22.5	2.25	acre
Medical / Dental / Vet	500	0.25	125	12.50	acre
Church	30	0.25	7.5	0.75	acre
Mortuary	10	0.25	2.5	0.25	acre
Recreational	100	0.25	25	2.50	acre
Parking / Transportation	200	0.25	50	5.00	acre
Mini Storage	30	0.25	7.5	0.75	acre
Office	300	0.125	37.5	3.75	acre
Bank	1000	0.125	125	12.50	acre
Park / Open Space / Agriculture	2	0.25	0.5	0.05	acre
Vacant					<i>not assessed</i>

¹ Average trip generation rates used for Assessment calculation are based on trip generation rates published by the San Diego Association of Governments.

The SFE rates derived in Table 2 are then applied to each individual parcel according to its rate category and the number of units or the lot acreage as applicable. For large, multi-family parcels with more than 100 units, the trip generation tends to increase less with additional units because of the density and number of residents who use public transportation or non-motorized modes of transportation. There, the units in excess of 100 are computed at one-tenth the rate. Similarly, with non-residential parcels in excess of five acres, the trip generation tends to increase less with size. There, acres (or portions thereof) are also computed at one-tenth the rate. A summary of these calculations is shown in Table 3.

Table 3 – Summary of SFEs by Category

Rate Category	SFE Rate	No. of Parcels	Parcels or Units or Acres	SFEs
Residential				
Single Family	1.00	17,509	17,509	17,509.000
Multi-Family<5 units	0.80	3,412	9,040	7,232.000
Multi-Family 5 or more units*	0.60	1,445	23,969	12,200.880
Condominium	0.80	2,415	2,415	1,932.000
Mobile Home	0.50	3	3	1.500
Multiple SFR on parcel	1.00	669	1,406	1,406.000
Non-Residential				
General Commercial*	15.00	784	184.45	2,766.750
Industrial / Warehouse*	1.50	397	257.27	345.621
Auto Repair	10.00	121	28.65	286.500
Hotel / Motel / Boarding	10.00	49	17.79	177.900
Hospital	6.25	9	13.15	82.188
Retirement Home	1.25	1	0.29	0.363
School / Day Care*	2.25	107	180.78	331.790
Medical / Dental / Vet	12.50	105	15.75	196.875
Church	0.75	106	41.55	31.163
Mortuary	0.25	1	0.11	0.028
Recreational*	2.50	31	54.92	81.455
Parking / Transportation	5.00	123	44.11	220.550
Mini Storage	0.75	8	7.51	5.633
Office*	3.75	227	79.73	292.676
Bank	12.50	18	5.70	71.250
Park / Open Space / Agriculture*	0.05	93	206.17	6.718
Vacant			<i>not assessed</i>	
TOTALS				45,178.837

* Categories where some parcels are over the size threshold (100 units for MFR and 5 acres for non-residential) and excess units are charged at reduced rates.

To arrive at the Assessment amount for a single-family equivalent (SFE), the total amount of Assessments to be collected must be divided by the total SFEs. The calculation is represented by the following formula;

$$\frac{\text{Total Assessments to be Collected}}{\text{Total SFEs}} = \text{Assessment per SFE}$$

Per the Annual Assessment Increase section of this report on the following page, an increase of 3%, based upon the sum of the 1982 and 2018 assessments is permitted for FY 2020. This adjustment formula was presented to and approved by the property owner balloting in 2018. In FY 2019, the total assessments collected were \$500,000 for the 2018 assessment and \$1,394,780 for the 1982 assessment. Using this information, the calculation above can be rewritten as follows:

$$\frac{2018 \text{ Assmt in FY 19} + (1982 \text{ Assmt in FY19} + 2018 \text{ Assmt in FY19}) \times (\% \text{ Increase})}{\text{Total SFEs}} = \text{Assmt per SFE}$$

Or, substituting numbers from the analysis:

$$\frac{\$500,000 + (\$1,394,780 + \$500,000) \times (0.03)}{45,178.837} = \$12.33 \text{ per SFE}$$

Table 4 – Assessment Rate Schedule

Rate Category	Assessment 2018-2019	Proposed Assessment 2019-2020	Unit
Residential			
Single Family	\$ 11.17	\$ 12.33	parcel
Multi-Family<5 units	\$ 8.94	\$ 9.86	unit
Multi-Family 5 or more units	\$ 6.70	\$ 7.40	unit
Condominium	\$ 8.94	\$ 9.86	parcel
Mobile Home	\$ 5.59	\$ 6.16	unit
Multiple SFR on parcel	\$ 11.17	\$ 12.33	unit
Non-Residential			
General Commercial	\$ 167.55	\$ 184.88	acre
Industrial / Warehouse	\$ 16.76	\$ 18.49	acre
Auto Repair	\$ 111.70	\$ 123.25	acre
Hotel / Motel / Boarding	\$ 111.70	\$ 123.25	acre
Hospital	\$ 69.81	\$ 77.03	acre
Retirement Home	\$ 13.96	\$ 15.41	acre
School / Day Care	\$ 25.13	\$ 27.73	acre
Medical / Dental / Vet	\$ 139.63	\$ 154.07	acre
Church	\$ 8.38	\$ 9.24	acre
Mortuary	\$ 2.79	\$ 3.08	acre
Recreational	\$ 27.93	\$ 30.81	acre
Parking / Transportation	\$ 55.85	\$ 61.63	acre
Mini Storage	\$ 8.38	\$ 9.24	acre
Office	\$ 41.89	\$ 46.22	acre
Bank	\$ 139.63	\$ 154.07	acre
Park / Open Space / Agriculture	\$ 0.56	\$ 0.62	acre
Vacant	Not assessed		

ANNUAL ASSESSMENT INCREASE

The District assessment is subject to an annual adjustment tied to the San Francisco-Oakland-Hayward Consumer Price Index-U as of December of each succeeding year ("CPI"), with a maximum annual adjustment not to exceed 3%. The maximum authorized rate is equal to the maximum rate in the first fiscal year the Assessment was approved adjusted annually by the lower of either 3% or the increase in the CPI. In order for the City's dedicated Streetlight Fund revenue sources to satisfy cost requirements into the future, the annual adjustment for each property may be calculated based upon the sum of the SLAD 1982-1 assessment and the SLAD 2018 assessment.

For the Period of December 2017 to December 2018, the CPI increased by 4.5% which exceeds the maximum annual adjustment. For Fiscal Year 2020 assessments, the annual adjustment is limited to 3%.

DURATION OF ASSESSMENT

The assessments may be continued every year after their formation, so long as the public Improvements need to be maintained and improved and the City requires funding from the assessments for these Improvements in the District. Assessments can continue to be levied annually after the City Council approves an annually updated Engineer's Report, budget for the Assessment, Improvements to be provided and other specifics of the Assessment. In addition, the City Council must hold an annual public hearing to continue the Assessment.

APPEALS AND INTERPRETATION

Any property owner who feels that the Assessment levied on the subject property is in error as a result of incorrect information being used to apply the foregoing method of assessment, may file a written appeal with the City of Berkeley Public Works department. Any such appeal is limited to correction of an assessment during the then current or, if before July 1, the upcoming fiscal year. Upon the filing of any such appeal, the City of Berkeley City Engineer or his or her designee will promptly review the appeal and any information provided by the property owner. If the City Engineer or his or her designee finds that the assessment should be modified, the appropriate changes shall be made to the assessment roll. If any such changes are approved after the assessment roll has been filed with the County for collection, the City Engineer or his or her designee is authorized to refund to the property owner the amount of any approved reduction. Any dispute over the decision of the City Engineer or her or his designee shall be referred to the Public Works Director and the decision of the Public Works Director shall be final.

ASSESSMENT STATEMENT

The amount to be paid for the Improvements and the expense incidental thereto to be paid by the City of Berkeley Street Lighting Assessment District 2018 for the fiscal year 2020 are generally as listed in Table 1.

As required by the Act, an Assessment Diagram is hereto attached and made a part hereof showing the exterior boundaries of the City of Berkeley Streetlight Assessment District 2018. The distinctive number of each parcel or lot of land in the City of Berkeley Streetlight Assessment District 2018 is its Assessor Parcel Number appearing on the Assessment Roll.

And I do hereby assess and apportion the net amount of the cost and expenses of the Improvements, including the costs and expenses incident thereto, upon the parcels and lots of land within the City of Berkeley Street Lighting Assessment District 2018, in accordance with the special benefits to be received by each parcel or lot, from the Improvements, and more particularly set forth in the cost estimate and method of assessment hereto attached and by reference made a part hereof.

The Assessments are made upon the parcels or lots of land within the City of Berkeley Street Lighting Assessment District 2018 in proportion to the special benefits to be received by the parcels or lots of land from the Improvements.

Each parcel or lot of land is described in the Assessment Roll by reference to its parcel number as shown on the Assessor's Maps of the County of Alameda for the fiscal year 2018. For a more particular description of said property, reference is hereby made to the deeds and maps on file and of record in the office of the County Recorder of the County.

I hereby place opposite the Assessor Parcel Number for each parcel or lot within the Assessment Roll, the amount of the assessment for the fiscal year 2020 for each parcel or lot of land within the City of Berkeley Street Lighting Assessment District 2018.

Dated: _____, 2019

Ricardo Salcedo, RCE 83969
Engineer of Work

Filed in the office of the City Clerk of the City of Berkeley, Alameda County, California,
this _____ day of _____, 2019

Mark Numainville
City Clerk

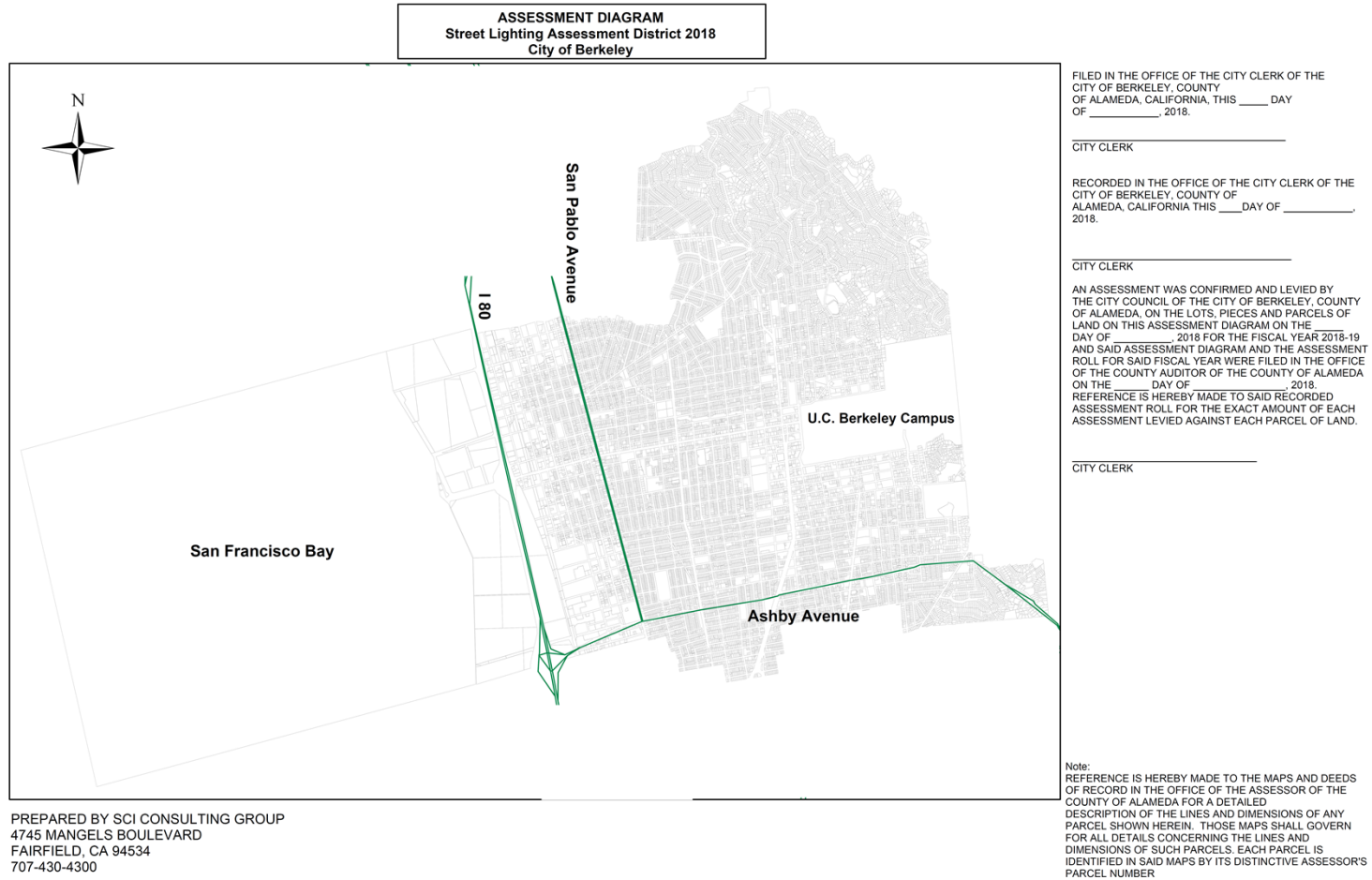
Filed in the office of the County Auditor-Controller of Alameda County, California, this
_____ day of _____, 2019.

Melissa Wilk
County Auditor-Controller

DIAGRAM

The boundaries of the City of Berkeley Streetlight Maintenance Assessment Districts and Annexations are displayed on the Assessment Diagram below.

Figure 1 – Assessment Diagram



CITY OF BERKELEY

**STREET LIGHTING
ASSESSMENT DISTRICT 2018**

**FY 2020 Assessment Roll
Listed by
Assessor's Parcel Number**

April 2019

Engineer's Report with Full Listing of Assessments by Assessor's Parcel Number is available at the following locations on or after April 26, 2019:

- City Clerk's Office, 2180 Milvia Street, Berkeley, CA 94704
- Main Berkeley Library, Reference Desk, 2090 Kittredge Avenue, Berkeley, CA 94704
- Public Works Engineering Division, 1947 Center Street, 4th Floor, Berkeley, CA 94704

Prepared by

RICARDO SALCEDO, PE
CITY OF BERKELEY
DEPARTMENT OF PUBLIC WORKS
ENGINEERING DIVISION

CITY OF BERKELEY

**STREET LIGHTING
ASSESSMENT DISTRICT 2018**

**FY 2020 Assessment Roll
Listed by
Street Address**

April 2019

Engineer's Report with Full Assessments Roll by Street Address is available at the following locations on or after April 26, 2019:

- City Clerk's Office, 2180 Milvia Street, Berkeley, CA 94704
- Main Berkeley Library, Reference Desk, 2090 Kittredge Avenue, Berkeley, CA 94704
- Public Works Engineering Division, 1947 Center Street, 4th Floor, Berkeley, CA 94704

Prepared by

RICARDO SALCEDO, PE
CITY OF BERKELEY
DEPARTMENT OF PUBLIC WORKS
ENGINEERING DIVISION

**NOTICE OF PUBLIC HEARING
BERKELEY CITY COUNCIL
STREET LIGHTING ASSESSMENTS**

Street Lighting Assessment District 2018:

In accordance with the voter-approved 2018 Streetlight Assessment Initiative, Street Lighting Assessment District 2018 is subject to an annual assessment adjustment equal to the annual change in the Bay Area Consumer Price Index (CPI), up to a maximum of 3%. The 4.5% CPI increase for the annual period ending December 2018 exceeds the 3% threshold, therefore the proposed annual assessment adjustment for the 2018 District in Fiscal Year (FY) 2020 is limited to 3%. As authorized by voters, the adjustment may be calculated based upon the sum of the 2018 District assessment and the Berkeley Street Lighting Assessment District 1982-1 assessment. The inclusion of the 1982 District assessment in the adjustment calculation for the 2018 District results in effective rate increases of 10% to 11% depending on the rate category. Detailed calculations of the annual adjustment and the corresponding rate increases are included in the 2018 District Engineer's Report for FY 2020. Copies of this report are on file at the main branch of the Berkeley Public Library and at the City Clerk's Office. The proposed assessment rates are summarized below:

Rate Category	Assessment 2018-2019	Proposed Assessment 2019-2020	Unit
Residential			
Single Family	\$ 11.17	\$ 12.33	parcel
Multi-Family<5 units	\$ 8.94	\$ 9.86	unit
Multi-Family 5 or more units	\$ 6.70	\$ 7.40	unit
Condominium	\$ 8.94	\$ 9.86	parcel
Mobile Home	\$ 5.59	\$ 6.16	unit
Multiple SFR on parcel	\$ 11.17	\$ 12.33	unit
Non-Residential			
General Commercial	\$ 167.55	\$ 184.88	acre
Industrial / Warehouse	\$ 16.76	\$ 18.49	acre
Auto Repair	\$ 111.70	\$ 123.25	acre
Hotel / Motel / Boarding	\$ 111.70	\$ 123.25	acre
Hospital	\$ 69.81	\$ 77.03	acre
Retirement Home	\$ 13.96	\$ 15.41	acre
School / Day Care	\$ 25.13	\$ 27.73	acre
Medical / Dental / Vet	\$ 139.63	\$ 154.07	acre
Church	\$ 8.38	\$ 9.24	acre
Mortuary	\$ 2.79	\$ 3.08	acre
Recreational	\$ 27.93	\$ 30.81	acre
Parking / Transportation	\$ 55.85	\$ 61.63	acre
Mini Storage	\$ 8.38	\$ 9.24	acre
Office	\$ 41.89	\$ 46.22	acre
Bank	\$ 139.63	\$ 154.07	acre
Park / Open Space / Agriculture	\$ 0.56	\$ 0.62	acre
Vacant	<i>Not assessed</i>		

Assessments under the 2018 District are generally determined by the number of parcels, units or acres, as applicable to each parcel category, and the associated rate category.

Berkeley Street Lighting Assessment District 1982-1:

The Department of Public Works is proposing no increase in FY 2020 for Street Lighting Assessment District 1982-1 rates. The existing assessment rates are as follows:

Rate Category	Assessment Rate	Unit
Residential and Institutional	\$ 0.0108	Bldg. Sf
Industrial	\$ 0.0216	Bldg. Sf
Commercial	\$ 0.0432	Bldg. Sf

Assessments under this district are determined by building square footage and rates.

Public Hearing Information

The hearing will be held on June 11, 2019 at 6:00 p.m. at a regular council meeting conducted in the Berkeley Unified School District Board Room located at 1231 Addison Street.

A copy of the agenda material for this hearing will be available on the City’s website at www.CityofBerkeley.info as of May 30, 2019.

FY 2020 Assessment Rolls for both street lighting districts will be available at the City Clerk’s Office 2180 Milvia Street, 1st Floor, and at the main Public Library, 2090 Kittredge Street.

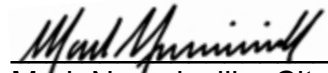
For further information, please contact Nisha Patel at (510) 981-6406 or Phil Harrington, Director of Public Works at (510) 981-6303

Written comments should be mailed or delivered directly to the City Clerk, 2180 Milvia Street, Berkeley, CA 94704, in order to ensure delivery to all Councilmembers and inclusion in the agenda packet.

Communications to the Berkeley City Council are public record and will become part of the City’s electronic records, which are accessible through the City’s website. **Please note: e-mail addresses, names, addresses, and other contact information are not required, but if included in any communication to the City Council, will become part of the public record.** If you do not want your e-mail address or any other contact information to be made public, you may deliver communications via U.S. Postal Service or in person to the City Clerk. If you do not want your contact information included in the public record, please do not include that information in your communication. Please contact the City Clerk at 981-6900 or clerk@cityofberkeley.info for further information.

Published: May 24, 2019 – The Berkeley Voice

~~~~~  
I hereby certify that the Notice for this Public Hearing of the Berkeley City Council was posted at the display case located near the walkway in front of the Maudelle Shirek Building, 2134 Martin Luther King Jr. Way, as well as on the City's website, on May 30, 2019.



\_\_\_\_\_  
Mark Numainville, City Clerk