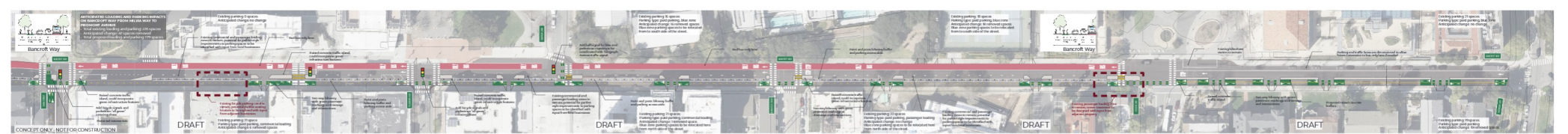
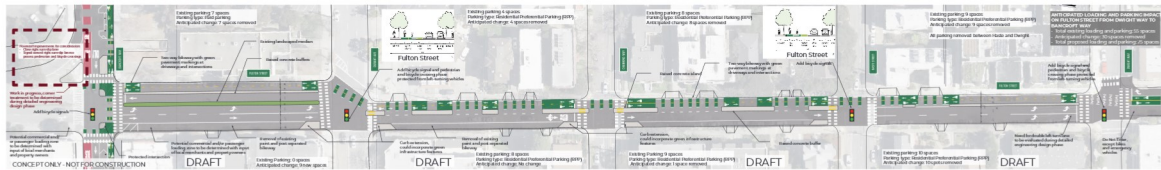


**Bancroft Way Design Concept (From Milvia Street through Dana Street) - DRAFT**  
Berkeley Southside Complete Streets Project

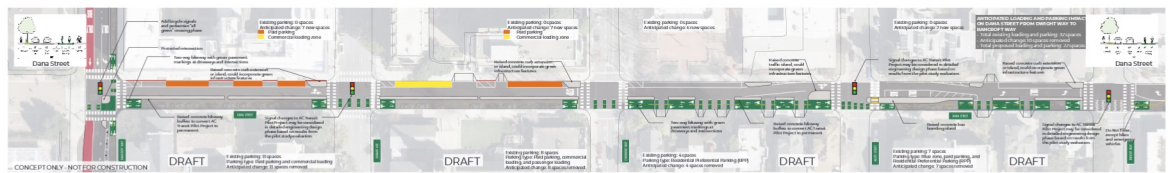


**Bancroft Way Design Concept (From Dana Street through Piedmont Avenue) - DRAFT**  
 Berkeley Southside Complete Streets Project



**Fulton Street Design Concept - DRAFT**  
Berkeley Southside Complete Streets Project

2/16/2022  
**TOOL**  
ARCHITECTURE



**Dana Street Design Concept - DRAFT**  
Berkeley Southside Complete Streets Project

2/16/2022  
TOOL  
north

**Telegraph Avenue Additional Information**

Many people spoke in the October 2016 public engagement process and expressed interest in a "car roof" Telegraph Avenue.

The Southeast Complete Streets Project focuses on the built environment, making physical changes to streets, not on operational changes like redefining lanes or changing signals or streetlights. Every element of the project is based on a City Council resolution and has been approved through a public hearing or a planning document from a partner agency or organization that supports City policies and has gone through a public process.

None of these plans, designs, policies, or planning documents are intended to take a 1/2 mile segment of Telegraph Avenue, as it is outside the scope of the current project. The Southeast Design for Telegraph Avenue is a concept, not a final design, and the design for the City is subject to change, including potential modifications. If you have any questions, please contact the community advisory group listed with this.

**Public and Stakeholder Feedback**

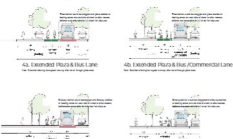
- Design and construction for pedestrian-oriented corridor
- Enhance pedestrian experience
- Consider design options to heavy and vehicle corridors
- Loading can improve conditions, but weight is a consideration and a challenge to pedestrian experience
- Design for flexibility for events and for operational changes that may happen from time to time

**Physical Design Concept: A Carless, Flexible Street**

Physical design can be a powerful tool to create a more pedestrian-oriented corridor. Carless streets where you're not driving but you can change things up and to create a more vibrant pedestrian experience.



**What could Telegraph Ave look like without private motor vehicles?**



**Telegraph Avenue Design Concept - DRAFT**  
Berkeley Southside Complete Streets Project