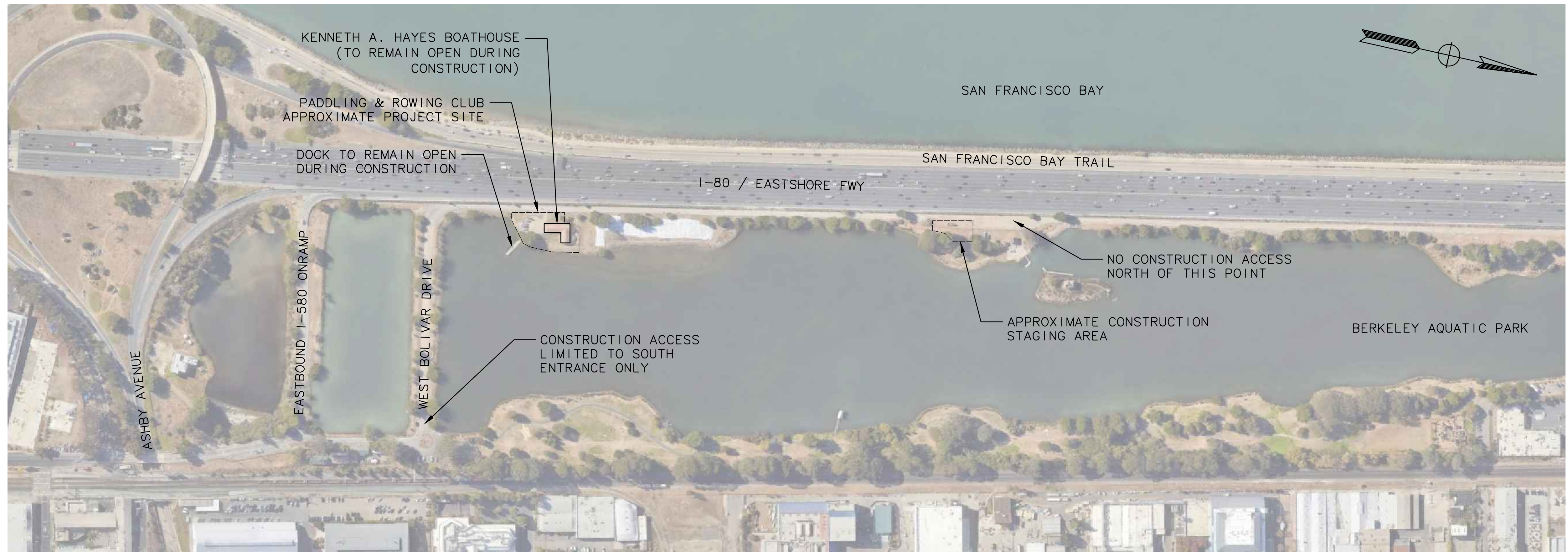
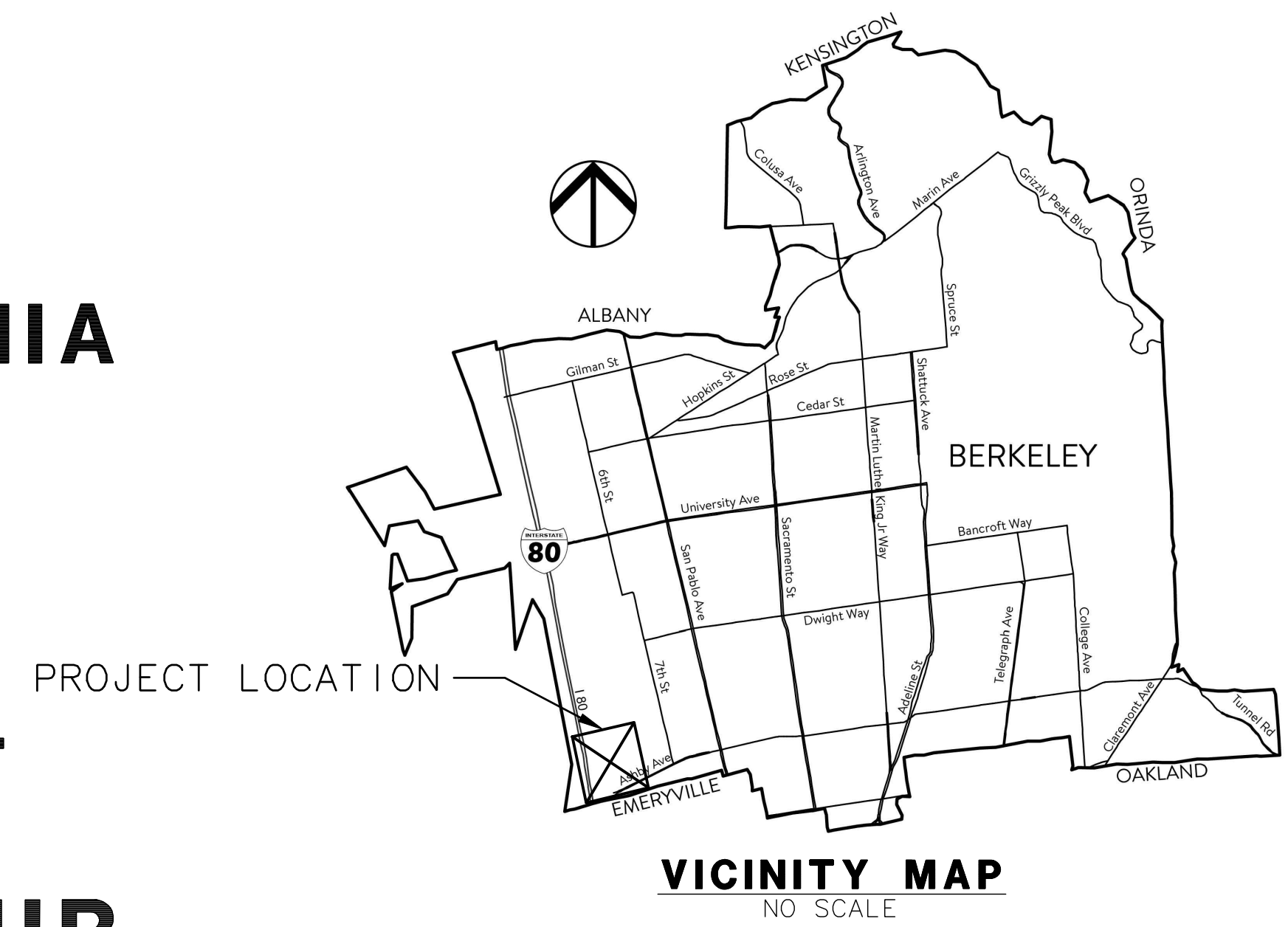


INDEX OF SHEETS:

SHEET No.	DESCRIPTION
1	T-1 TITLE
2	S-1 SITE PLAN
3	D-1 DETAILS
4	PD-1 PAVEMENT DELINEATION & SURFACE FEATURES PLAN
5	SC-1 CONSTRUCTION PHASING PLAN
6	SV-1 TOPOGRAPHIC SURVEY

CITY OF BERKELEY
ALAMEDA COUNTY, CALIFORNIA

PLANS
FOR THE CONSTRUCTION OF
PADDLING AND ROWING CLUB
PARKING LOT IMPROVEMENTS
AT BERKELEY AQUATIC PARK
 CITY PROJECT No. PRW PP15002
 SPEC No. 22-11514-C
 JANUARY 06, 2023



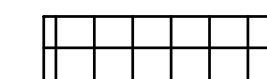


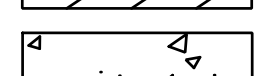

LOCATION MAP
SCALE: NONE

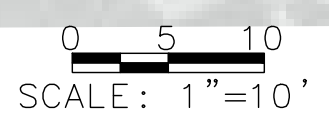
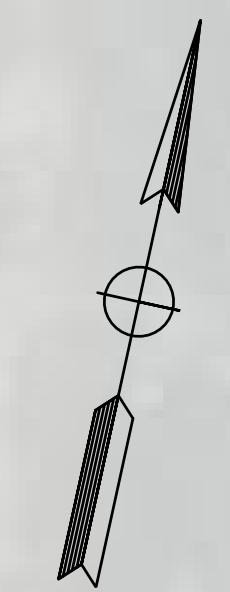
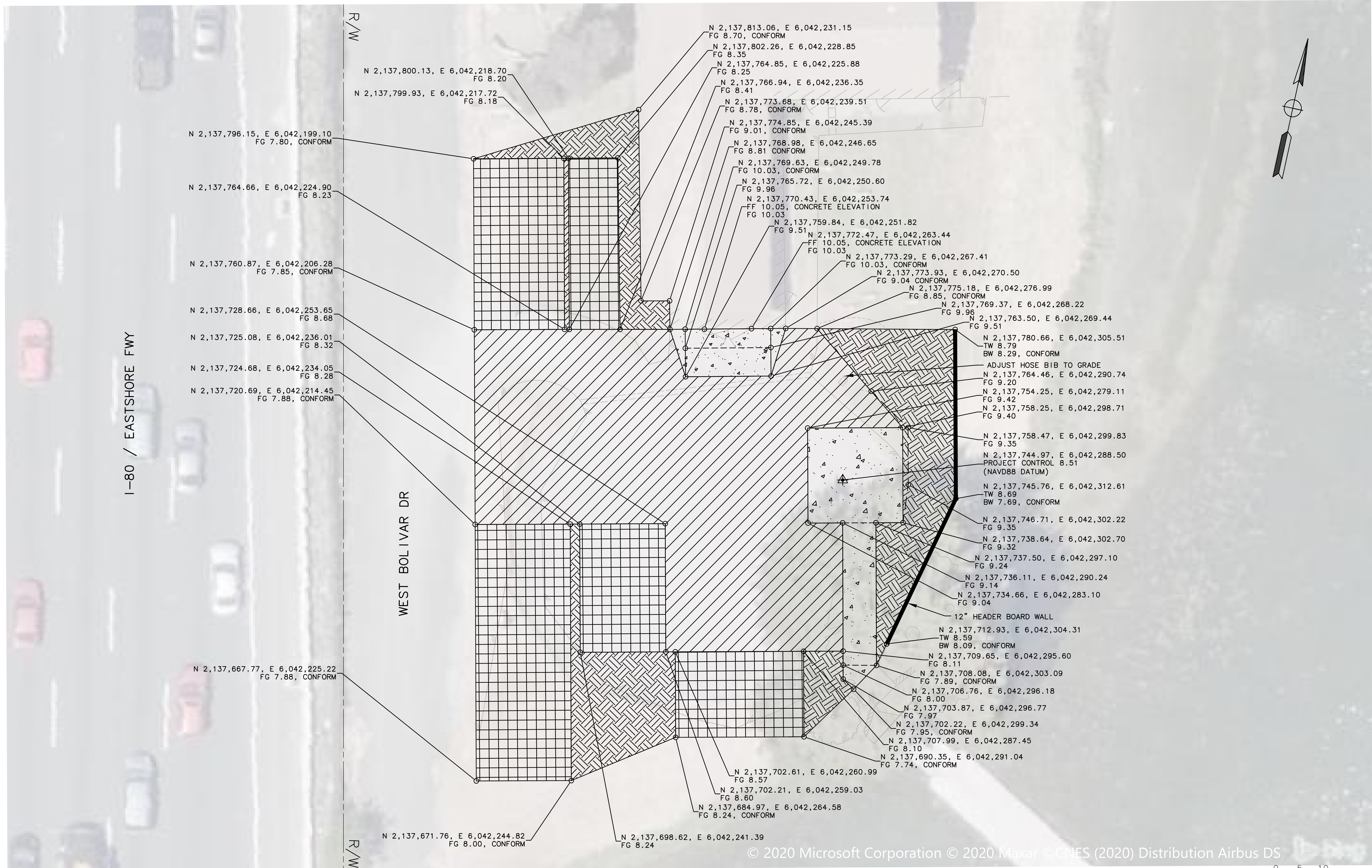
PADDLING AND ROWING CLUB PARKING LOT IMPROVEMENTS	TITLE	SHEET No. T-1
CITY OF BERKELEY PARKS, RECREATION & WATERFRONT DEPARTMENT	CHECKED BY: APPROVAL REC'D: DESIGNED BY: JS DRAWN BY: NZ APPROVED BY: NELSON LAM SUPERVISING CIVIL ENGINEER	TOTAL SHEETS: 6 FILE No.: DATE: 01-06-2023 SCALE:
PROJECT NO.: AL-18108 PROJECT DESCRIPTION:	PROJECT NO.: AL-18108 PROJECT DESCRIPTION:	PROJECT NO.: AL-18108 PROJECT DESCRIPTION:
REVISIONS:	REVISIONS:	REVISIONS:
	JOE STREEPER No. 64445 Exp. 6/30/23 CIVIL STATE OF CALIFORNIA	JOE STREEPER

NOTE:

1. FOR SURVEY CONTROL, SEE TOPOGRAPHIC SURVEY SHEET.

LEGEND:

-  POROUS FLEXIBLE PAVER
-  4" AC WITH 9" STABILIZED BASE
-  GRADING
-  6" PCC 6" CL2 AB
-  GRADE BREAK



**PADDLING AND ROWING CLUB
PARKING LOT IMPROVEMENTS**

SITE PLAN

**CITY OF BERKELEY
PARKS, RECREATION & WATERFRONT
DEPARTMENT**

DESIGNED BY: JS
DRAWN BY: NZ
APPROVED BY: NELSON LAM
SUPERVISING CIVIL ENGINEER

CHECKED BY:
APPROVAL REC'D:

PROJ. NO.: AL-18108

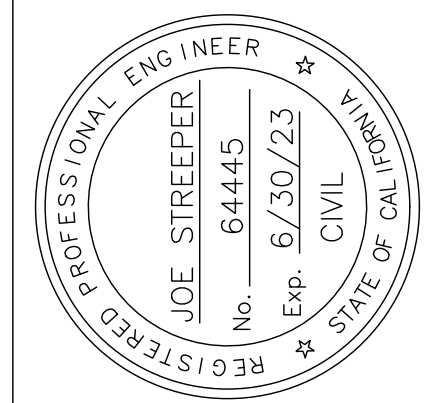
DATE: 01-06-2023

SCALE: 1"=10'

FILE No.:

6

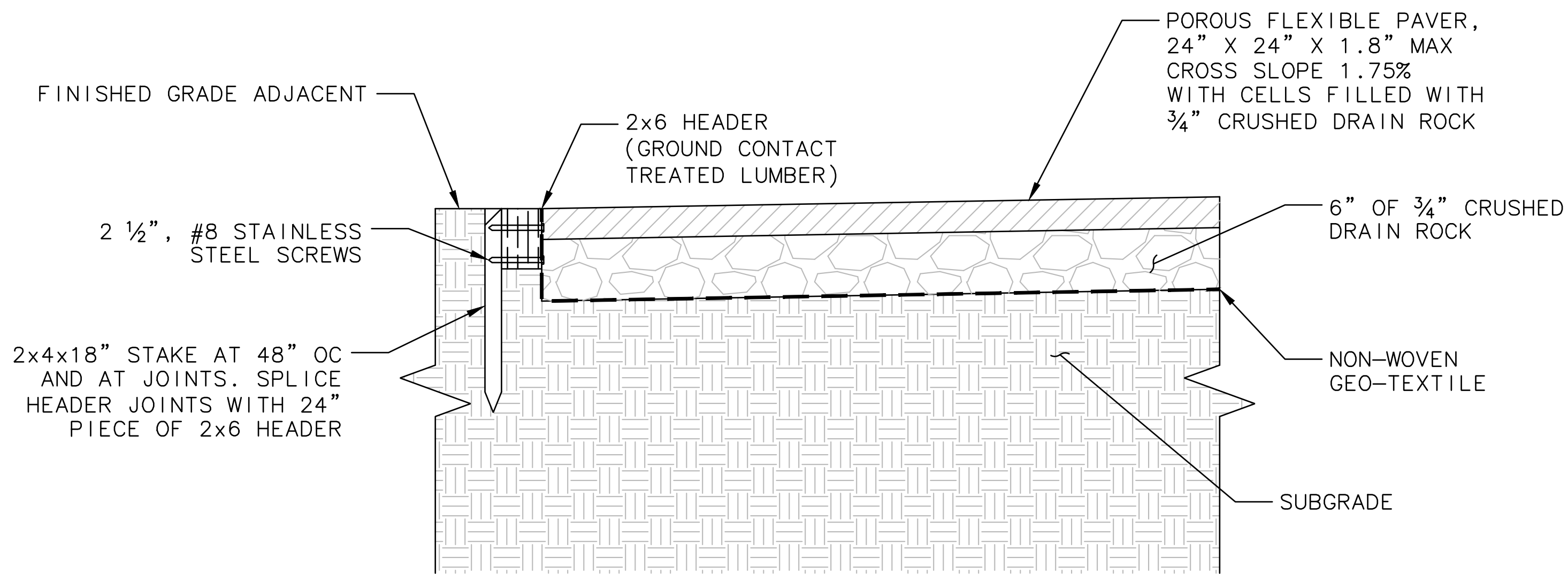
SHEET No. **S-1**



JOE STREEPER

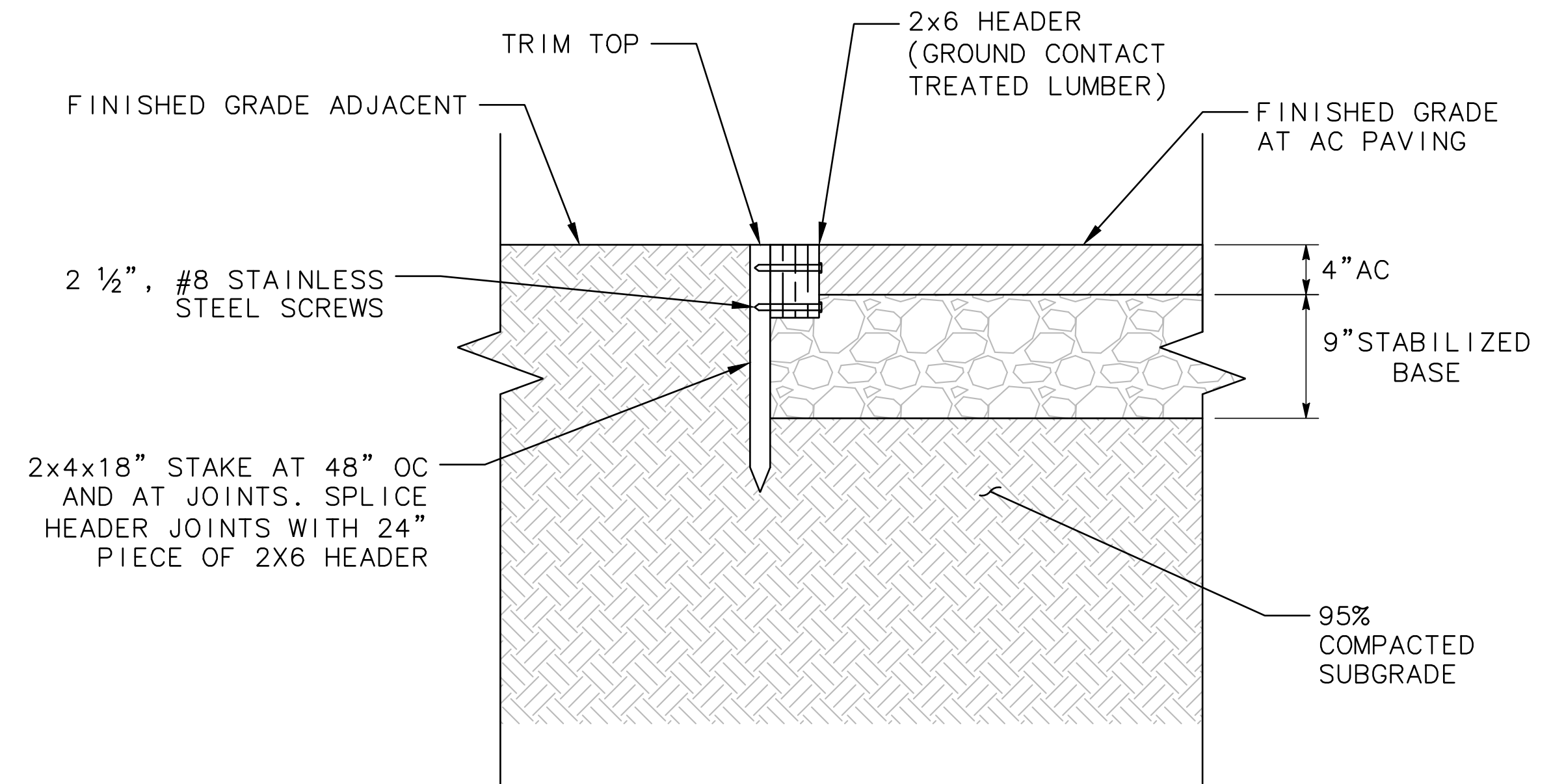


J:\Berkeley-AL-18108-01-Civil-Engineering-Services\CADD_2018\Rowing and Paddling Club\Sheets\AL-18108 - 02 - SITE PLAN.dwg 06 Jan 2023 3:01:19pm mcollie



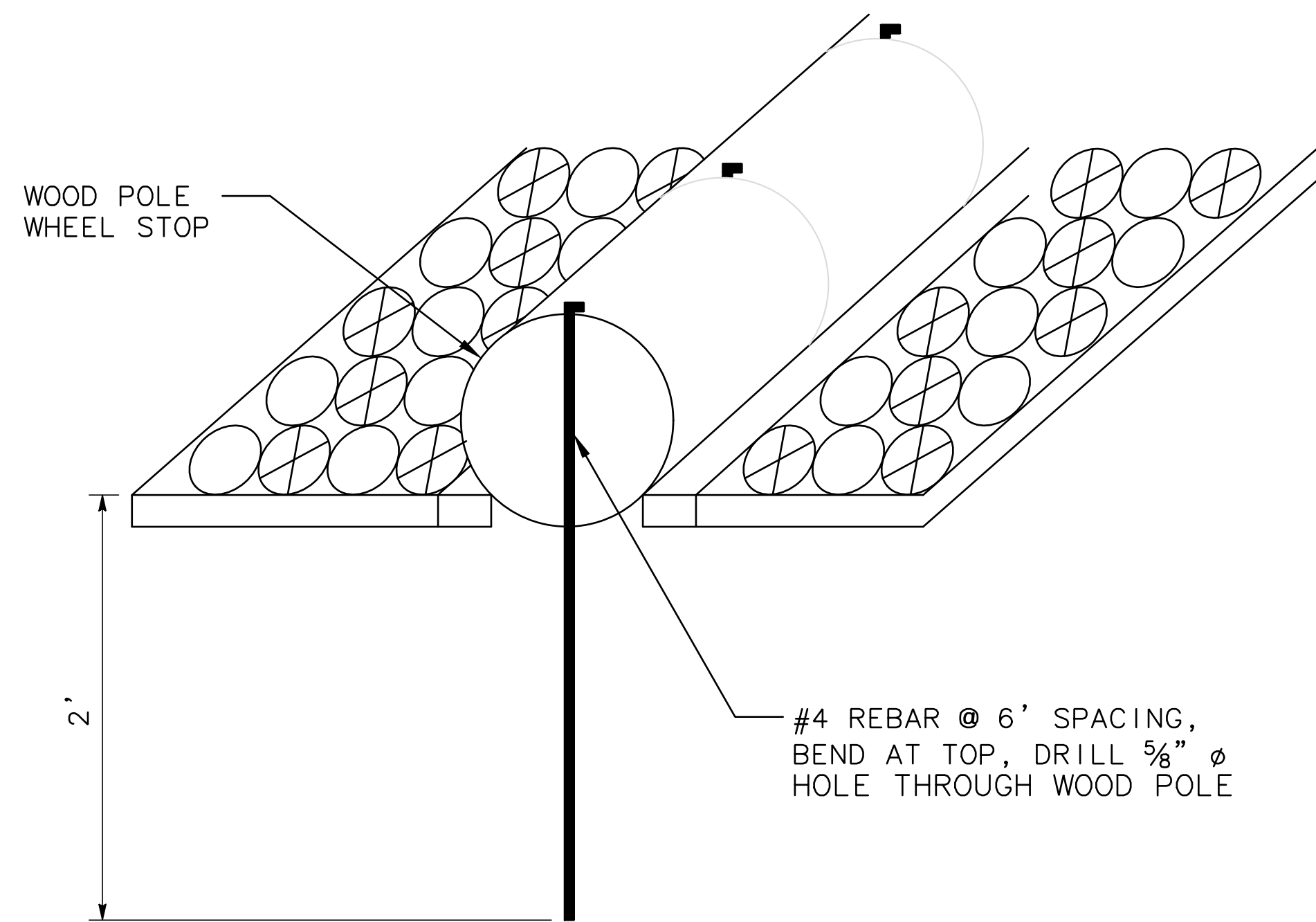
POROUS FLEXIBLE PAVER DETAIL

NO SCALE



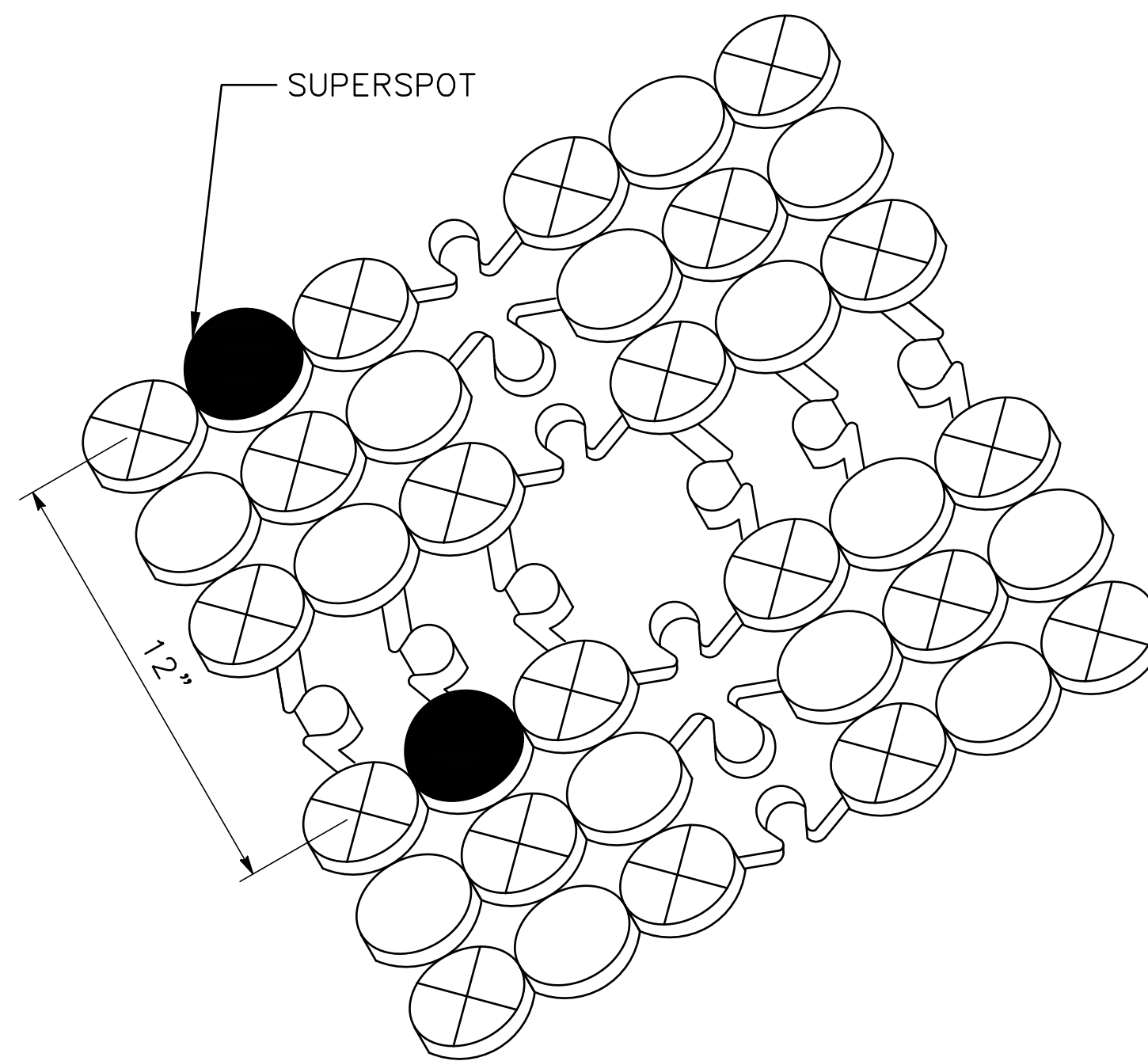
HEADER AT AC PAVING

NO SCALE



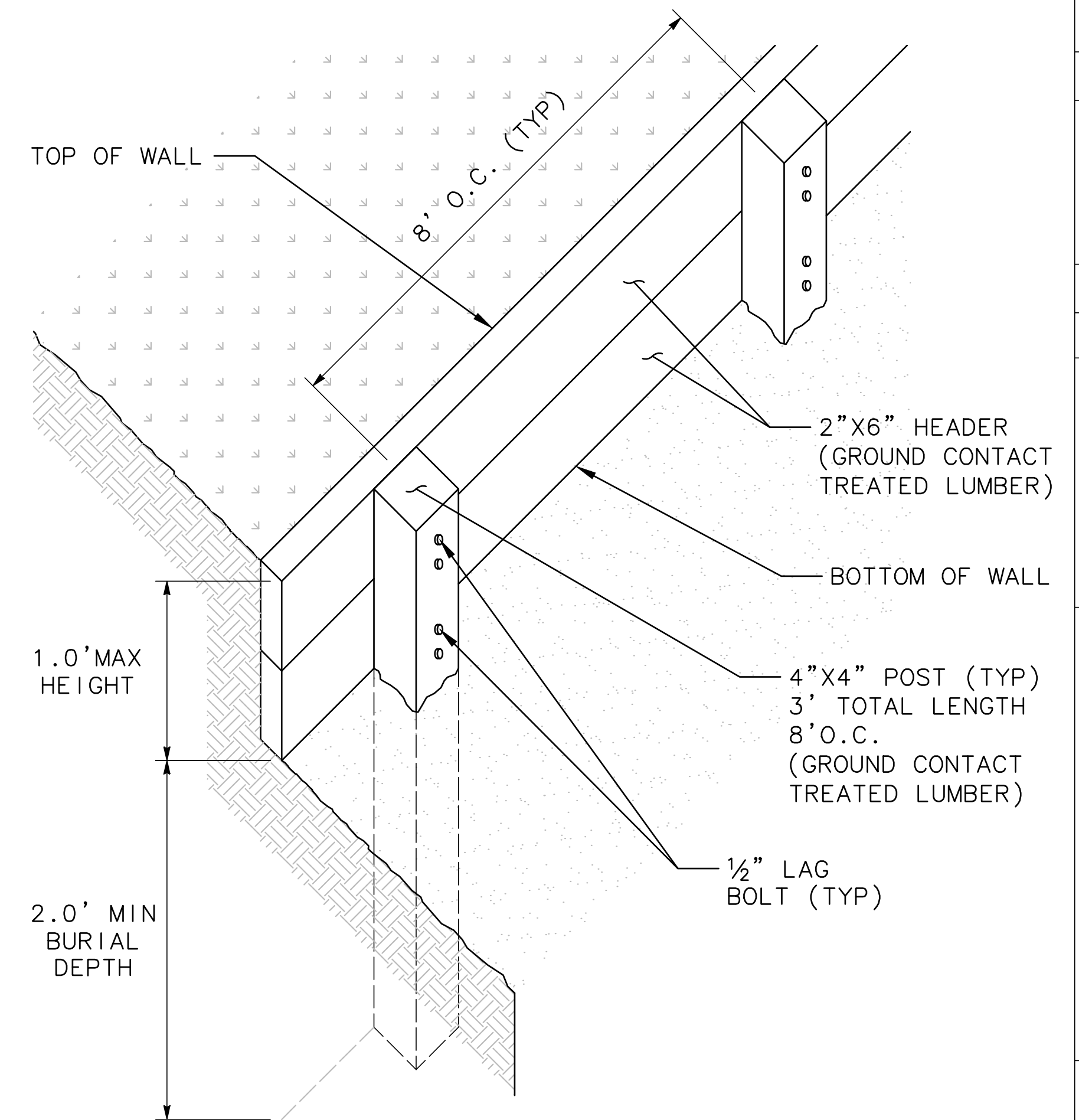
WOOD POLE WHEEL STOP

NO SCALE



SUPERSPOT MARKERS

NO SCALE



HEADER BOARD WALL DETAIL

NO SCALE

**PADDLING AND ROWING CLUB
PARKING LOT IMPROVEMENTS**

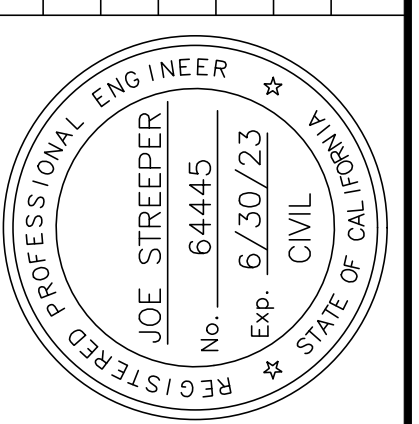
DETAILS

**CITY OF BERKELEY
PARKS, RECREATION & WATERFRONT
DEPARTMENT**

DESIGNED BY: JS
DRAWN BY: NZ
APPROVED BY: NELSON LAM
SUPERVISING CIVIL ENGINEER

CHECKED BY:
APPROVAL REC'D:

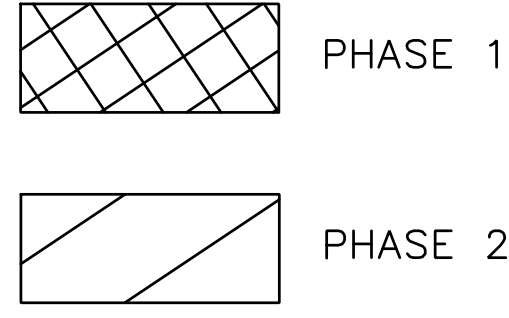
PROJ. NO.: AL-18108
DATE: 01-06-2023
SCALE: NO SCALE
TOTAL SHEETS: 6
FILE NO.: D-1



JOE STREEPER



LEGEND:



PHASE 1

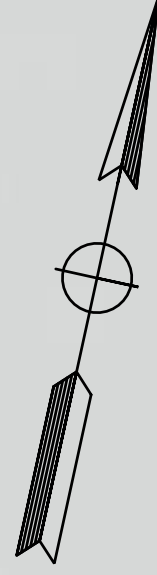
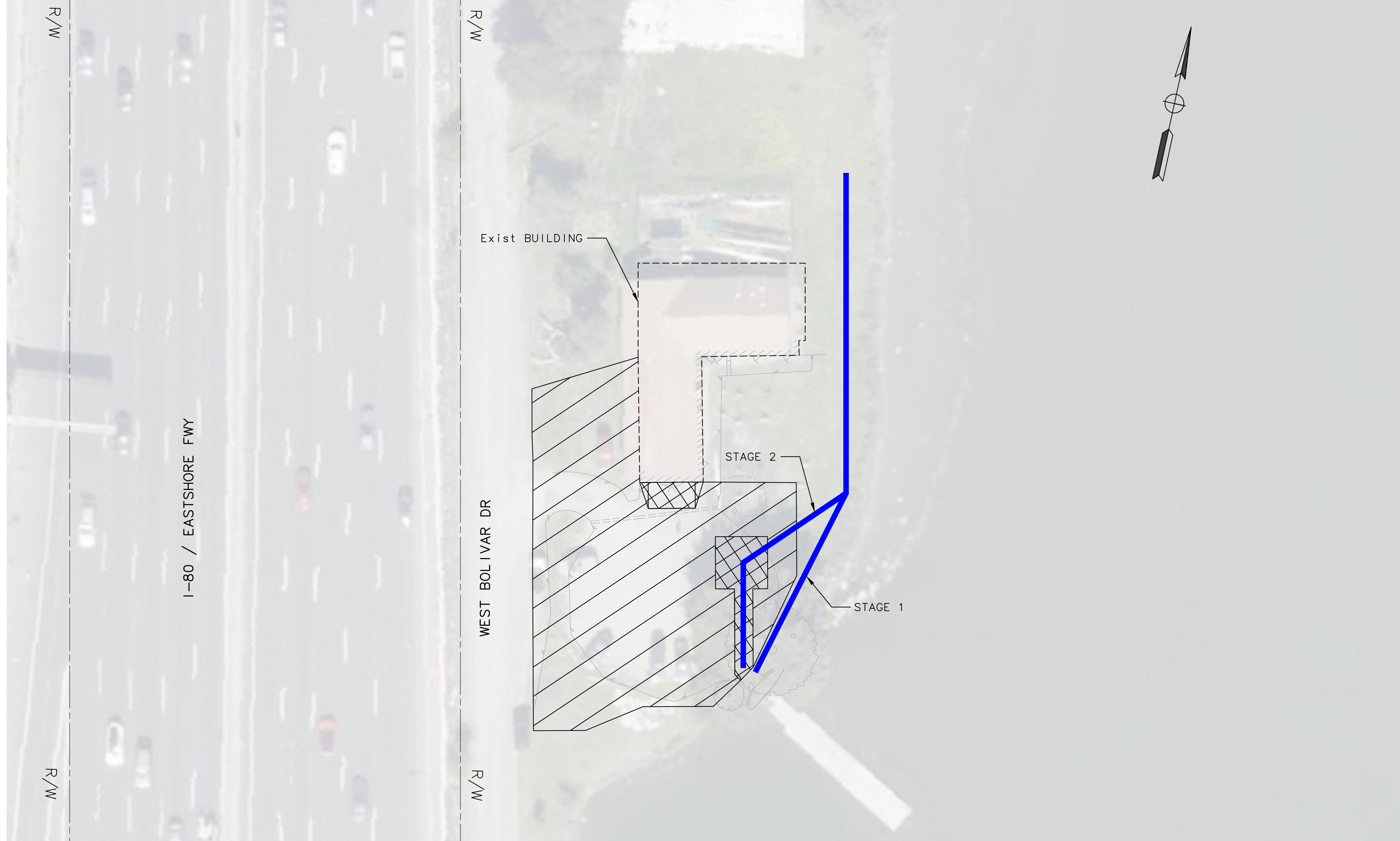
PHASE 2

TEMPORARY ACCESS PATH FOR BOATERS

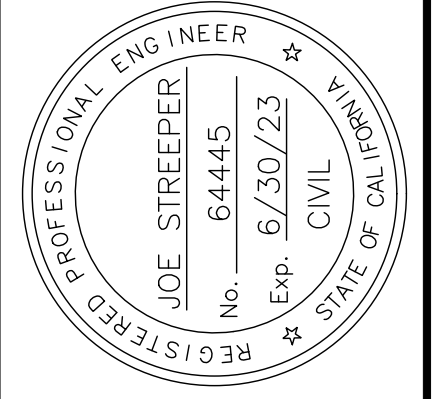
CONSTRUCTION ACTIVITIES:

PHASE 1: CONCRETE CONSTRUCTION AND EAST MOST CONFORM AREA.

PHASE 2: ALL OTHER CONSTRUCTION



SCALE: 1"=20'



JOE STREEPER
No. 64445
Exp. 6/30/23
CIVIL
STATE OF CALIFORNIA



CITY OF BERKELEY
PARKS, RECREATION & WATERFRONT
DEPARTMENT

DESIGNED BY: JS
DRAWN BY: NZ
APPROVED BY: NELSON LAM
SUPERVISING CIVIL ENGINEER

CHECKED BY:
APPROVAL REC'D:

PADDLING AND ROWING CLUB
PARKING LOT IMPROVEMENTS
**CONSTRUCTION
PHASING PLAN**

SCALE: 1"=20'

TOTAL SHEETS: 6
FILE No.:

SHEET No. **SC-1**

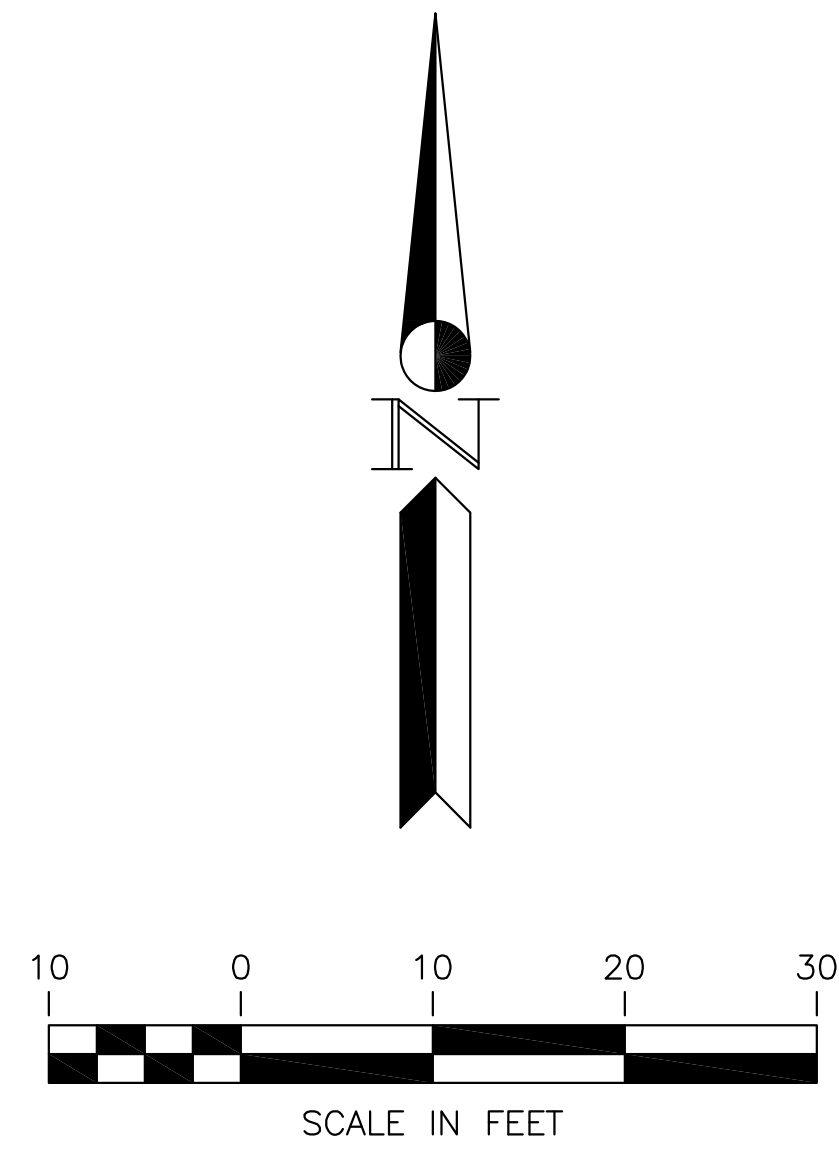
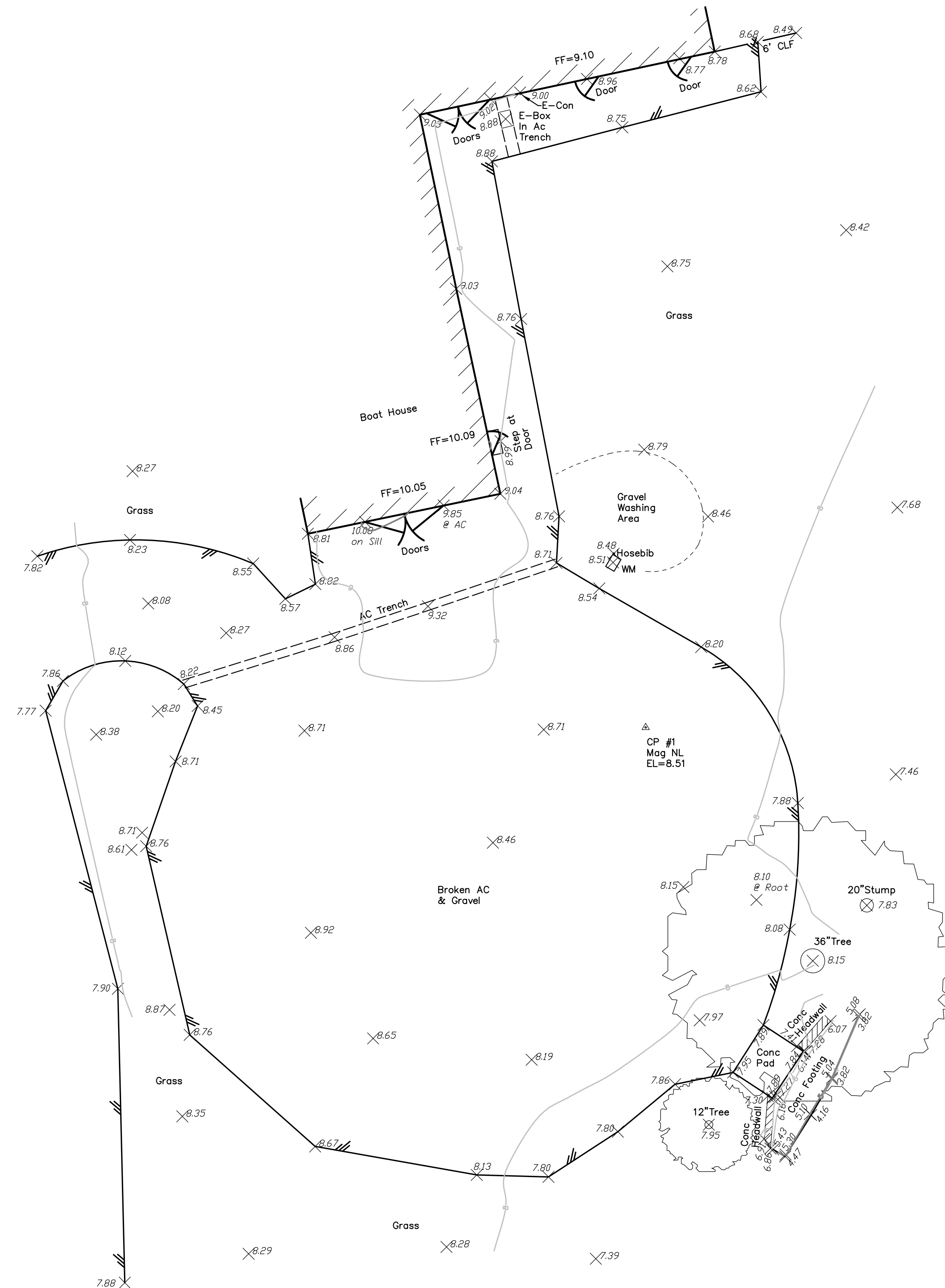
REV.	DATE	DESCRIPTION	BY

LEGEND & ABBREVIATIONS

	Gas Line	AC	Asphalt Concrete
	Storm Drain Line	Bldg	Building
	Edge of Pavement	Bldr	Bollard
	Wall (Size and Type)	BFP	Back Flow Preventor
	Building Wall	Conc	Concrete
	Hedge	Con	Conduit
	Shrub	El.	Elevation
	Trees (Size and Type)	E, Elec	Electric
	Manhole	Euc	Eucalyptus
	Catch Basin (Size as Shown)	FF	Finish Floor
	Spot Elevation	F/L	Flow Line
	Survey Control Point	Inv.	Invert
		Irr.	Irrigation
		IV	Irrigation Valve
		Mag	Magnetic
		NL	Nail
		SD	Storm Drain
		Typ	Typical
		w/	with
		WM	Water Meter
		Vt	Vault

SURVEYOR'S NOTES:

1. THE COORDINATE SYSTEM IS BASED ON A RTK GPS ESTABLISHED CONTROL NETWORK ON SITE, USING NAD83 CCS ZONE 3 COORDINATES (EPOCH 2010.00). BASELINE CONTROL POINTS ESTABLISHED ON-SITE ARE LCC CP #1 (N 2137744.97, E 6042288.50 - GPS COORDINATE HELD HERE), A SET MAG NL IN AC & GRAVEL PARKING LOT, LCC CP #2 (NOT SHOWN ON SHEET, N 2137592.85, E 6042236.69), A SET MAG NL IN AC ON WEST BOLIVAR DRIVE SOUTH OF THE PARKING LOT. DISTANCES AND COORDINATES AS SHOWN ON THIS SURVEY SHOULD BE CONSIDERED AS GROUND DISTANCES AND COORDINATES.
2. ELEVATIONS ARE BASED NAVD88, PER RTK GPS SURVEY ESTABLISHED CONTROL POINTS. SITE BENCHMARK WAS HELD AT LCC CP #1 (SEE ABOVE FOR DESCRIPTION), ELEVATION HELD AS 8.51 FEET, (NAVD88).
3. UTILITIES SHOWN ARE BASED UPON SURFACE OBSERVATIONS OF STRUCTURES AND USA MARKINGS FOUND IN FIELD. THE SURVEYOR ASSUMES NO RESPONSIBILITY FOR LOCATIONS, CAPACITIES OR FUNCTIONALITY OF ALL UTILITIES SHOWN HEREON. SOME UNDERGROUND UTILITIES MAY NOT BE SHOWN.



CITY OF BERKELEY AQUATIC PARK IMPROVEMENTS		TOPOGRAPHIC SURVEY (PARKING LOT)	
Berkeley,	Alameda County,	California	File: 2016.123.00
			SV-1