

Standard Restrictions

72-Hour Rule

Move your vehicle every 72 hours

Drivers cannot leave a vehicle parked or standing in the same spot on any public street for 72 or more consecutive hours. Failure to move the vehicle risks receiving a citation. The “72-Hour Rule” applies to any public street in the City, regardless of other parking designations or restrictions. This includes vehicles that have valid permits.

To report any vehicles that have been left on a public street for more than 72 hours, call 510-981-5890.

Time Limits

Do not stay longer than the posted time limit

Drivers cannot park a vehicle for longer than the posted time limit. Refer to nearby signs and curb colors for information about time limit restrictions in a certain area.

Move your vehicle out of the block

After the time limit has been reached, drivers must move the vehicle out of the block in order to avoid receiving a citation. Parking in another parking spot on the same block or on the opposite side of the street does not count.

Curb Colors

Painted curbs indicate that parking is subject to certain rules and restrictions.

Curb Color	Rules & Restrictions	Hours Enforced	Typical Areas
Red: No Stopping Anytime	Curbs painted red designate areas where stopping, standing or parking are prohibited under any circumstances.	24 hours a day, 7 days a week	<ul style="list-style-type: none"> • Bus Zones • Fire Districts • Edges of driveways • Intersection corners • Fire hydrants • Curb ramps
Yellow: Commercial Loading	Curbs painted yellow are reserved for commercial vehicles to actively load and unload merchandise or materials for up to 20 minutes. Noncommercial vehicles may also use yellow zones to load or unload passengers but are limited to three (3) minutes. Alert: Some metered parking spaces may also be yellow zones during certain hours, so check nearby signage and/or meter screens for applicable restrictions.	7AM - 6PM, Mon - Sat	<ul style="list-style-type: none"> • Commercial Areas • Large businesses or properties that receive or deliver a lot of shipments
Green: Short-Term Parking	Curbs painted green signal short time limited parking. Green zones are typically accompanied by signs that specify the time limit, ranging from five (5) minutes to 30 minutes. Some green zones are metered, while others are not.	9AM - 6PM, Mon - Sat	<ul style="list-style-type: none"> • Small neighborhood convenience stores • Dry cleaners • Florists • Repair shops • Postal shipping centers • Hardware stores • ATM machines
White: Passenger Loading	Curbs painted white designate passenger loading zones. Unless signs are posted otherwise, drivers may use white zones for up to three (3) minutes to drop off or pick up passengers, or for specific purposes such as to deposit mail in an adjacent mailbox.	24 hours a day, 7 days a week	<ul style="list-style-type: none"> • Hospitals and medical offices • Senior centers • Restaurants with a 100+ seats • Valet parking, hotels, apartment or condominium buildings with 50+ units • Theaters, churches or other large places of worship or assembly • Schools and government buildings
Blue: Persons with Disabilities (Placards)	Curbs painted blue and disabled parking spaces are reserved for vehicles displaying valid disabled placards or disabled persons' license plate from any state. The crosshatched areas adjacent to disabled parking spaces are intended to accommodate side-loading vans, and are identically enforced.	24 hours a day, 7 days a week	<ul style="list-style-type: none"> • Areas with high public use • Parking lots and garages • Dense commercial areas • Near public parks and playgrounds

Parking Meters

Parking meters are used to increase parking availability in high-demand commercial areas or near public facilities, making it easier for visitors to find parking near their destination.

Only stay for the time you pay

It is unlawful to occupy a metered parking space without paying, even if the driver is “live parking” (staying in the vehicle). Per BMC 14.52.040, drivers must pay for parking immediately after occupancy of a parking space. Per BMC 14.52.050, it is unlawful to remain parked at a single-space meter or pay-and-display parking space after the meter or your dashboard receipt has expired. Only stay for the time you pay!

Do not stay past the posted time limit, even if you pay

Metered parking spaces have time limits that are specified on street-facing decals, the meter screen, and/or posted signage. Even if they continue to “feed the meter,” drivers who stay beyond the posted time limit are at risk of citation.

You can park at broken meters, but not past the posted time limit

If a parking meter or pay station is out of order, drivers are allowed to park for up to the posted time limit. Drivers who stay longer than the posted time limit at a broken meter are at risk of citation.

Report a broken meter or pay station

It is the driver’s responsibility to operate the meter or pay station correctly. Please report a broken meter or pay station by calling 311 or (510) 981-2489, or going online at this link: <https://berkeleyca.gov/city-services/parking/parking-meters> and providing the meter ID number, which is an alphanumeric code located on the street-facing side of the meter (e.g., “S1906”), or the pay station ID number.

Street Sweeping

Sweeping the streets keeps them clean, and street sweeping citations discourage vehicle owners from blocking the street sweeping truck’s path.

Check the schedule and signs

On-street parking is restricted on certain days and times for street sweeping, so remember to check signs before parking. The street sweeping schedule can be found at: <https://berkeleyca.gov/city-services/streets-sidewalks-sewers-and-utilities/street-sweeping>

Residential Preferential Parking (RPP) Permit Areas

Some neighborhood parking is controlled by the Residential Preferential Parking (RPP) Program, which prioritizes parking for residents during the day.

Time Limits and Effective Hours

Streets in a total of 16 RPP areas have 2-hour parking limits for vehicles that do not possess a valid RPP permit. These zones are marked by signs that indicate the RPP areas (for example, Area D) and the days and times the time limit is enforced. RPP areas are typically enforced from 8 AM to 7 PM, Monday through Friday, and in some areas Saturday.

Remember to move your vehicle

Vehicles without a valid RPP permit must move to a different block face after the 2-hour time limit has run out. All vehicles are subject to the 72-hour rule.

How do I obtain an RPP permit?

Visit the webpage at: <https://berkeleyca.gov/city-services/parking/residential-preferential-parking-permits>

Temporary No-Parking Signs

To allow for adequate notice in advance of construction, public event, or other activities that necessitate street closures, temporary NO-PARKING-TOW-AWAY signs are posted at least 72 hours in advance of a construction project and 24 hours before any other event. Vehicles parking at these areas are at risk of citation and/or vehicle towing.

Check for signs every 24 hours

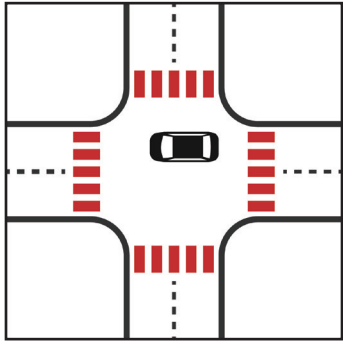
Check your vehicle at least every 24 hours for temporary posted signs to avoid unnecessary citation. While some temporary no-parking zones are for certain times and days, others are all day. Be sure to read the signs carefully to confirm the restrictions.

How do I request a temporary no-parking sign?

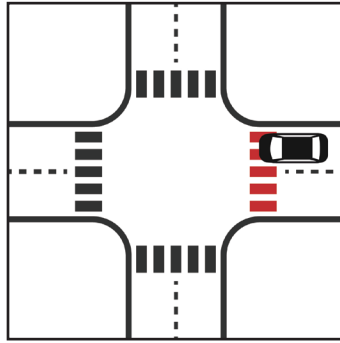
Temporary no-parking signs should be requested as part of the permit application process, managed by the Permit Service Center, phone number 510-981-7500.

Parking Violations

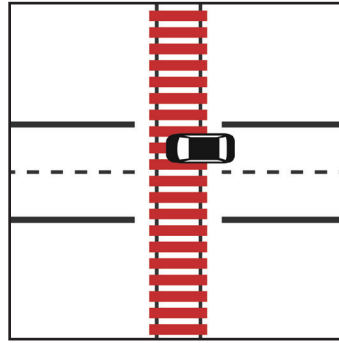
Do not stop, park, or leave a vehicle in any of the following places:



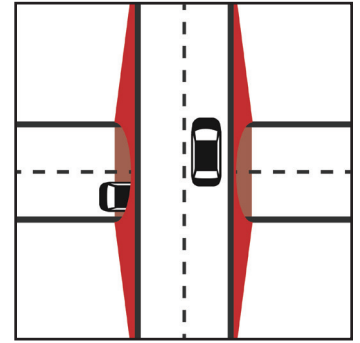
Within an intersection



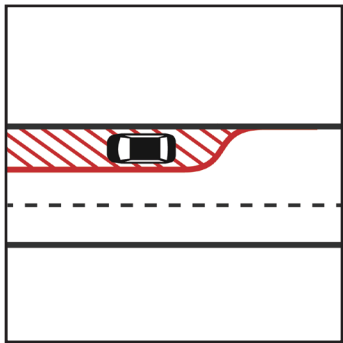
On or blocking a crosswalk (marked or unmarked) or sidewalk



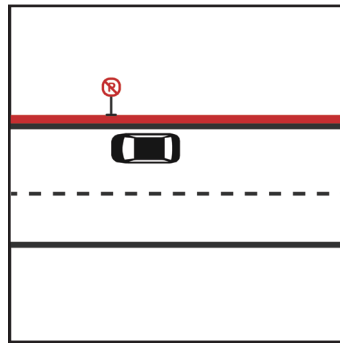
On or within 7-1/2 feet of a railroad track



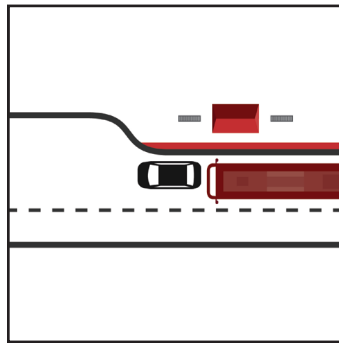
In a tunnel or on a bridge, except where permitted by sign



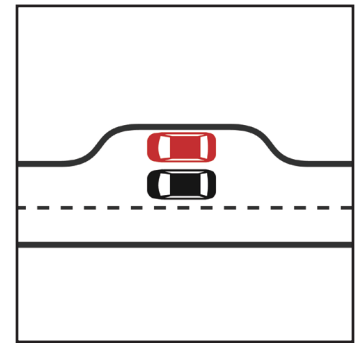
Between a safety zone and curb



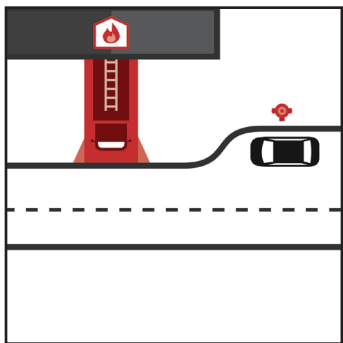
Where signs or markings prohibit parking



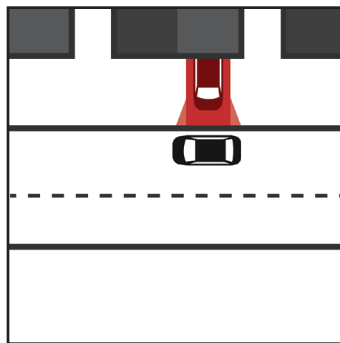
Beside a curb marked as a bus stop (painted red)



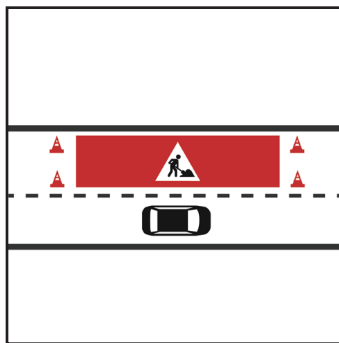
On the roadway side of any vehicle parked at the curb (double parking)



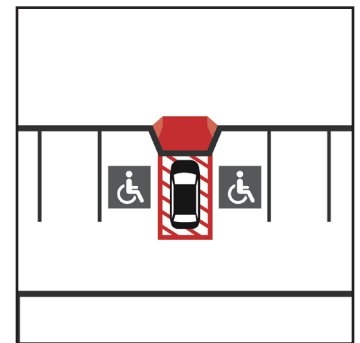
Within 15 feet of a fire hydrant or the driveway entrance of a fire station



In front of a public driveway



Beside or opposite any street or highway construction work where stopping or parking would obstruct traffic.



Closer than 3 feet to a sidewalk access ramp for the physically handicapped;

Parking Restrictions and Allowances for Specific Uses or Users

Disabled Parking

A vehicle displaying a valid Disabled Person placard or license plate may park at / in:

- Blue curbs (disabled placard parking)
- Green curbs (with no time limit)
- Metered parking (no charge)
- Residential preferential parking permit areas

Alert: Persons with a disabled placard may NOT park in commercial or passenger loading zones, or at red curbs.

Passenger Loading

Where can I pick up and drop off passengers?

Passenger loading is permitted along curbs that are marked yellow or white for up to 3 minutes. The driver must remain in the vehicle while passenger loading is occurring.

Construction Zones

Temporary No-parking Signs

City of Berkeley and / or a person authorized by City of Berkeley must post NO-PARKING-TOW-AWAY signs at least 72 hours in advance of a construction project. To avoid receiving a citation and / or having their vehicle towed, a driver should check their parked vehicle.

How do I request a temporary no-parking sign and a construction vehicle permit?

Temporary no-parking signs and parking permits should be requested as part of the permit application process, managed by the Permit Service Center, phone number 510-981-7500.

Business and Commercial Vehicles

Commercial Loading Zones

Curbs marked by yellow are for commercial use and are for loading and unloading merchandise or materials. These zones are enforced from 7 AM to 6 PM, Monday through Saturday except when otherwise designated by appropriate signs. Some metered parking spaces may be yellow zones during certain hours.

In order to use a yellow zone for up to (20) twenty minutes drivers must have any one of three requirements:

- 1) A City of Berkeley Business license decal affixed to the left rear bumper of the vehicle
- 2) A marked commercial vehicle with logo or lettering
- 3) Commercial plates issued by Department of Motor Vehicles.

Drivers must be actively engaged in loading or unloading.

Note: Some commercial loading zones require paid parking. In particular, the “yellow cap” parking meters on Telegraph Avenue between Dwight Way and Bancroft Way are reserved for paid 20-minute commercial loading only from 9 AM to 11 AM, Monday-Saturday. From 11 AM to 6 PM, Monday-Saturday, the meters switch to general metered parking with a 2-hour time limit. Other loading zones in the City may also be metered. Drivers should always check the signs for restrictions.

Do not park heavy duty vehicles between 2 AM and 5 AM

You cannot park any heavy-duty commercial vehicle (13+ tons) on any public street between the hours of 2 AM and 5 AM for a length of time longer than one hour.

Do not store broken vehicles on the street

You cannot park, keep, or store any motor vehicle which has been damaged, wrecked or is in a state of disrepair on any public street. This includes vehicles in connection with or as a part of the business operation of any automobile repair garage, body repair shop, auto wrecking establishment or similar business activity.