



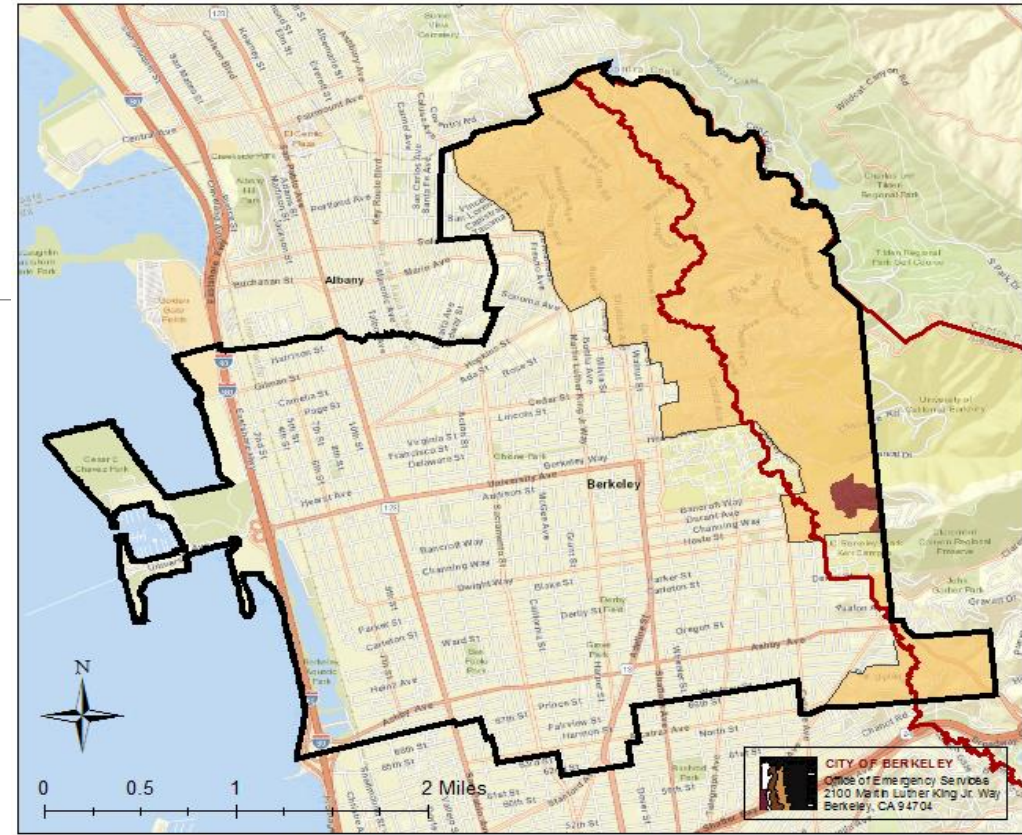
Wildfire Planning

Topics

- History
- Wildfire Training and Response
- City of Berkeley Plans
- Equity and Environmental Impact
- Partner Agency Collaboration
- Current City Programs
- Spring 2019 One-Time Work
- Future Action

History Berkeley's Fire Zones

- Zone 3 – Panoramic Hill
- Zone 2- The rest of the hills
- Zone 1 – The rest of the City
- Cal Fire Very High Fire Hazard Severity Zone



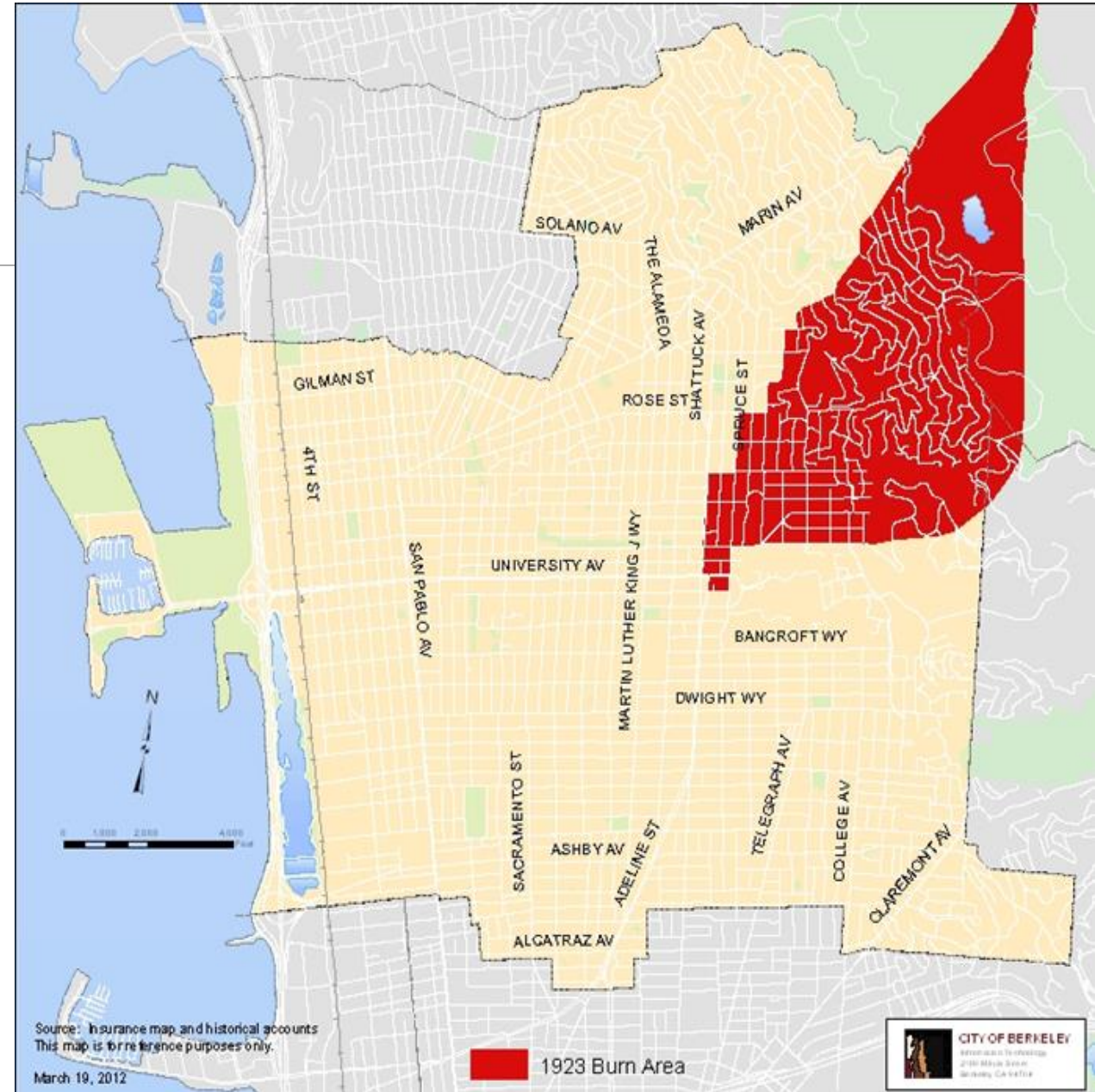
Sources: Fire Zones 1, 2, and 3 as of 01/2013 Berkeley Ordinance NO. 7,157-N.S., and California Department of Forestry.

Service Layer Credits: Sources: Esri, HERE, Garmin, USGS, Intermap, INCREMENT P, NRCan, Esri Japan, METI, Esri China (Hong Kong), Esri Korea, Esri (Thailand), NGCC, © OpenStreetMap contributors, and the GIS User Community



History – 1923 Fire

- September 17, 1923
 - Wildfire in North Berkeley Hills
 - 640 Structures Burned



History – Tunnel Fire

- October 19, 1991
 - Wildfire in North Oakland/South Berkeley Hills
 - 62 Structures Burned in Berkeley
 - 3,000 Total Structures Burned
 - 25 Fatalities



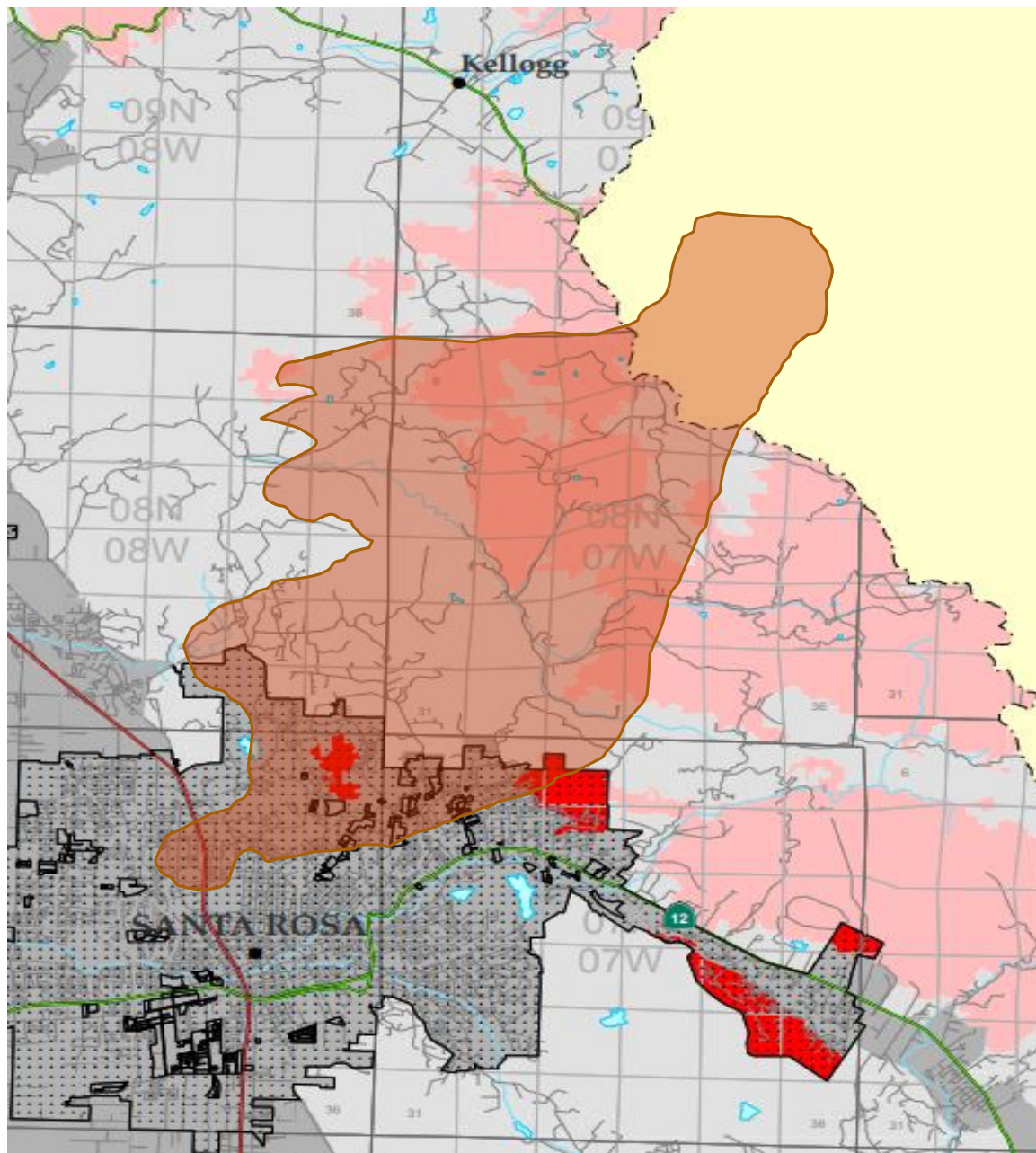
Actions Resulting From the Tunnel Fire




- Fire Assessment District
- 3 Full Time Inspectors
- Fire Fuel Chipper Program
- Debris Bin Program
- Proposition 218
- Mutual Response Areas
- Hills Emergency Forum

History – 2015 to 2018

- Lake County Fires – 2015
 - Rocky Fire
 - Valley Fire
 - Jerusalem Fire
- Sonoma/Napa Fires – 2017
 - Tubbs Fire
 - Atlas Fire
 - Nuns Fire
- Northern California – 2018
 - Carr Fire
 - Camp Fire





-  Tubbs Fire Perimeter
-  Cal Fire VHFHSZ
-  US 101

Training and Response

- Emergency Public Information and Warning
- Training
- MRA
- Master Mutual Aid
- Pre-positioning



Photo: BFD, BPD, CERT Volunteers, 2015 Wildfire Exercise

Emergency Public Information and Warning

- <https://www.cityofberkeley.info/EmergencyAlerting/>
- AC Alert
- Nixle
- Wireless Emergency Alerts (WEA)
- City of Berkeley Website
- Radio/Television/Social Media



Training

- Annual Wildland Firefighting Training
- Upcoming Evacuation Plan Training
- Past and Upcoming Functional Exercises



Photo: Berkeley Firefighters, 2015 Wildfire Exercise

Response

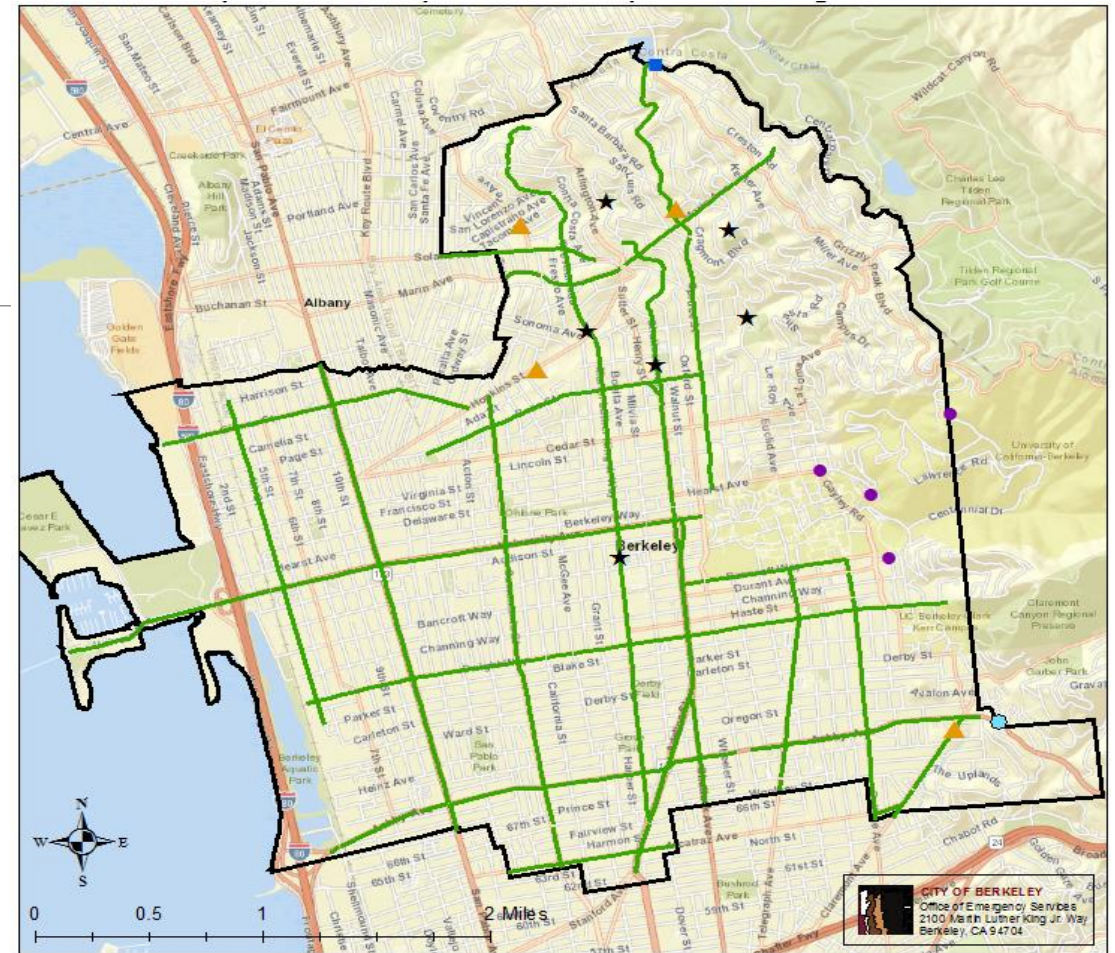
- Mutual Response Areas
- Master Mutual Aid Plan
- Pre-Positioning



Photo: Firefighter Mike Shuken, E6, Tubbs Fire

City of Berkeley Plans

- Wildfire Evacuation Plan
- Fire Weather Coordination Plan
- Local Hazard Mitigation Plan



- ▲ BUSD Owned
- UC Owned
- EBMUD Owned
- Privately Owned
- ★ City Owned
- Major streets
- ▭ City of Berkeley

Wildfire Evacuation Plan

- Describes how the City of Berkeley will direct, coordinate, and support the evacuation of people and animals out of an area threatened by wildfire.
- Collaboration amongst many stakeholders
- Available for Commission Review and Public Comment

Fire Weather Coordination Plan

- Coordinates Red Flag Warning information
 - Red Flag vs Extreme Fire Weather
- During a Warning, the plan describes how:
 - The City adjusts activities to focus on WUI fire readiness
 - The City provides warning and notification to the public
- Draft plan under review by strategic partners

Fire Weather Coordination Plan

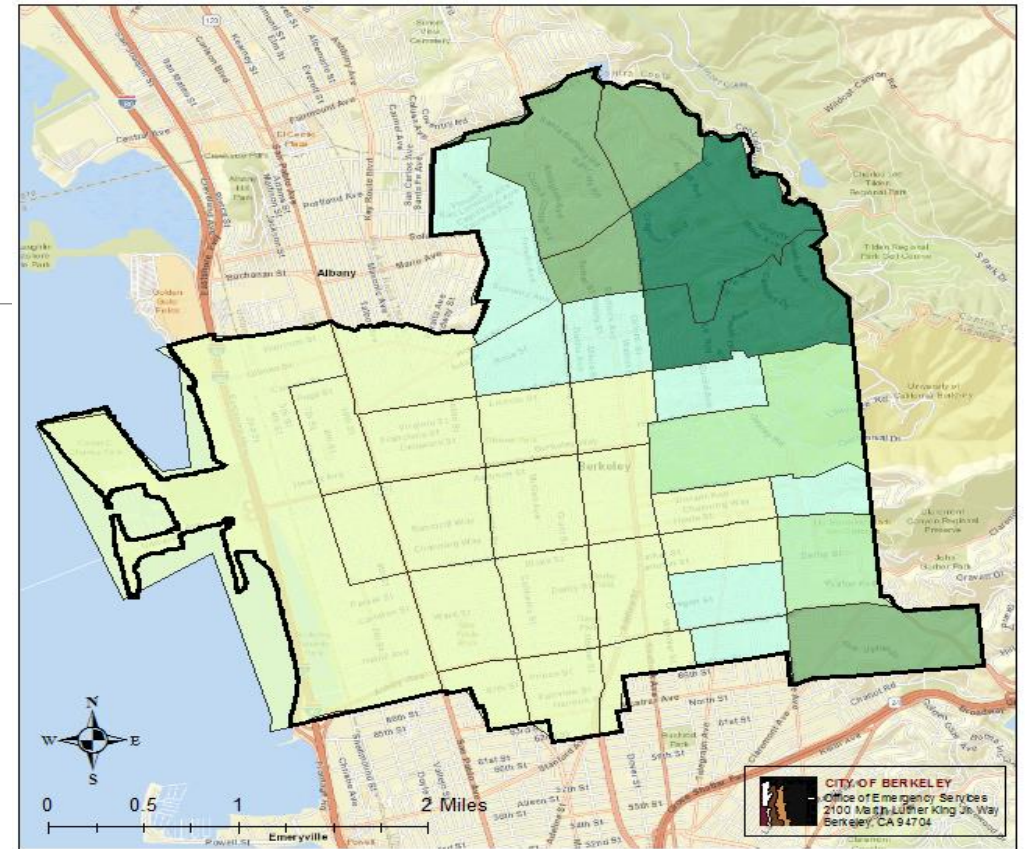
Relative Humidity	Sustained Wind 6-11mph	Sustained Wind 12-20mph	Sustained Wind 21-29 mph	Sustained Wind 30+
Daytime Min RH 29-42% and/or Nighttime Max RH 60-80%				Red Flag
Daytime Min RH 19-28% and/or Nighttime Max RH 46-60%			Red Flag	Extreme
Daytime Min RH 9-18% and/or Nighttime Max RH 31-45%		Red Flag	Extreme	Extreme
Daytime Min RH <9% and/or Nighttime Max RH <31%	Red Flag	Red Flag	Extreme	Extreme

Local Hazard Mitigation Plan

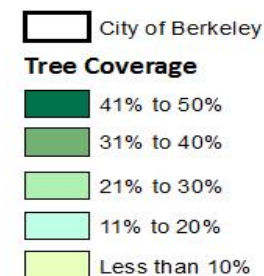
- Outlines the 5 Year effort to minimize the impact of natural disasters
- Current plan: 2014
- Draft plan: 2019 under review and public comment

Equity and Environmental Impact

- Collaborative Planning
 - UC Berkeley Sagehen Creek Field Station process
 - <https://sagehen.ucnrs.org/>
- Climate impact of wildfire mitigation
- Tree and vegetation coverage in Berkeley



Source: Cal Adapt <https://cal-adapt.org/>
Service Layer Credits: Sources: Esri, HERE, Garmin, USGS, Intermap, INCREMENT P, NRCan, Esri Japan, METI, Esri China (Hong Kong), Esri Korea, Esri (Thailand), NGCC, © OpenStreetMap contributors, and the GIS User Community





Partner Agency Collaboration

- Hills Emergency Forum

- City of Berkeley
- City of El Cerrito
- City of Oakland
- Cal Fire
- EBMUD
- East Bay Regional Parks District
- Lawrence Berkeley National Lab
- Moraga Orinda Fire District
- UC Berkeley

Partner Agency Collaboration

- Pacific Gas and Electric
 - Community Wildfire Safety Program
 - Actively trim vegetation from power lines in Berkeley
 - Panoramic Way Tree Removal
 - Undergrounding and utility hardening
 - Impact of bankruptcy?

Current Programs

- Annual Fire Zone Inspection Program
- Fire Fuel Chipper Program
- Debris Bin Program
- Fire Fuel Abatement on Public Land

https://www.cityofberkeley.info/fire_fuel_program/

Spring 2019 One-Time Work

Program	Budget
Fuel Reduction - Parks	\$200,000
Fuel Reduction - Evacuation Routes/Foot Paths	\$200,000
Public Education - Demonstration Fire Resistive Garden	\$50,000
Public Education - Safe Passages Pilot and Evacuation Plan Outreach	\$25,000
Fire Safety Signs for Parks and Fire Stations	\$50,000
Fire Break Tree Removal	\$25,000
Seasonal Fire Crew Program Setup	\$25,000

Future Action

- Ongoing review and prioritization of Council referred fire safety items
- Identify ongoing funding for the one-time work funded in FY 2019.
- Identify ongoing funding for Wildland Urban Interface and Public Fire Safety Education positions in Fire Prevention

Future Action

- Develop a Comprehensive Wildfire Fuel Reduction Plan
 - City of Berkeley
 - Berkeley Camps
- Support Utility Hardening
 - Undergrounding consultant in Public Works
 - Undergrounding Subcommittee
- Fire code review and updates

Future Action

- Public Education and Outreach
- Safe Passages Pilot and expansion
- Consider additional emergency public warning systems