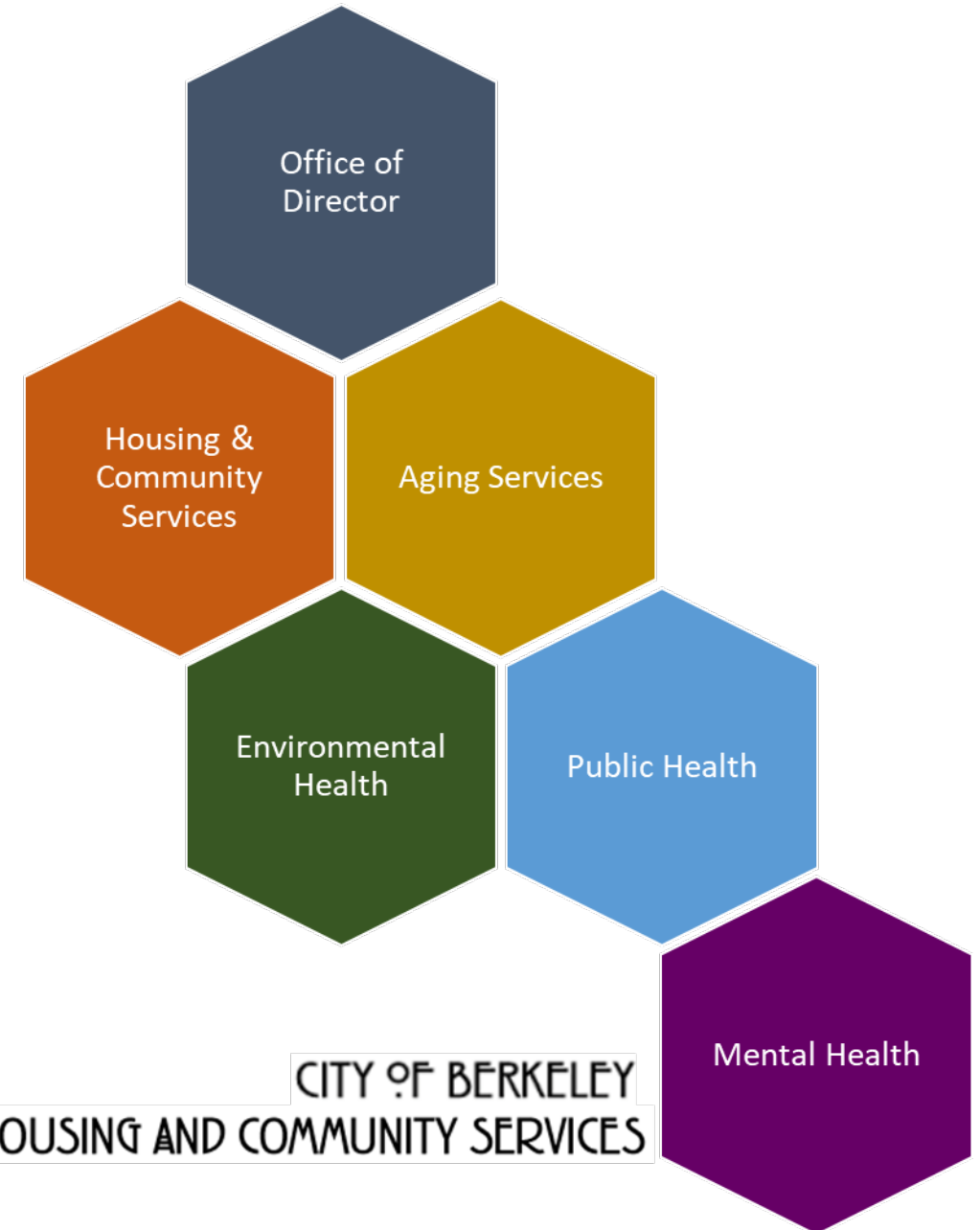




City of Berkeley Department of Health, Housing, and Community Services

Enhancing Community Life and
Supporting Health and Wellness
for All



CITY OF BERKELEY
HEALTH, HOUSING AND COMMUNITY SERVICES



Berkeley Youth Equity Partnership (YEP)

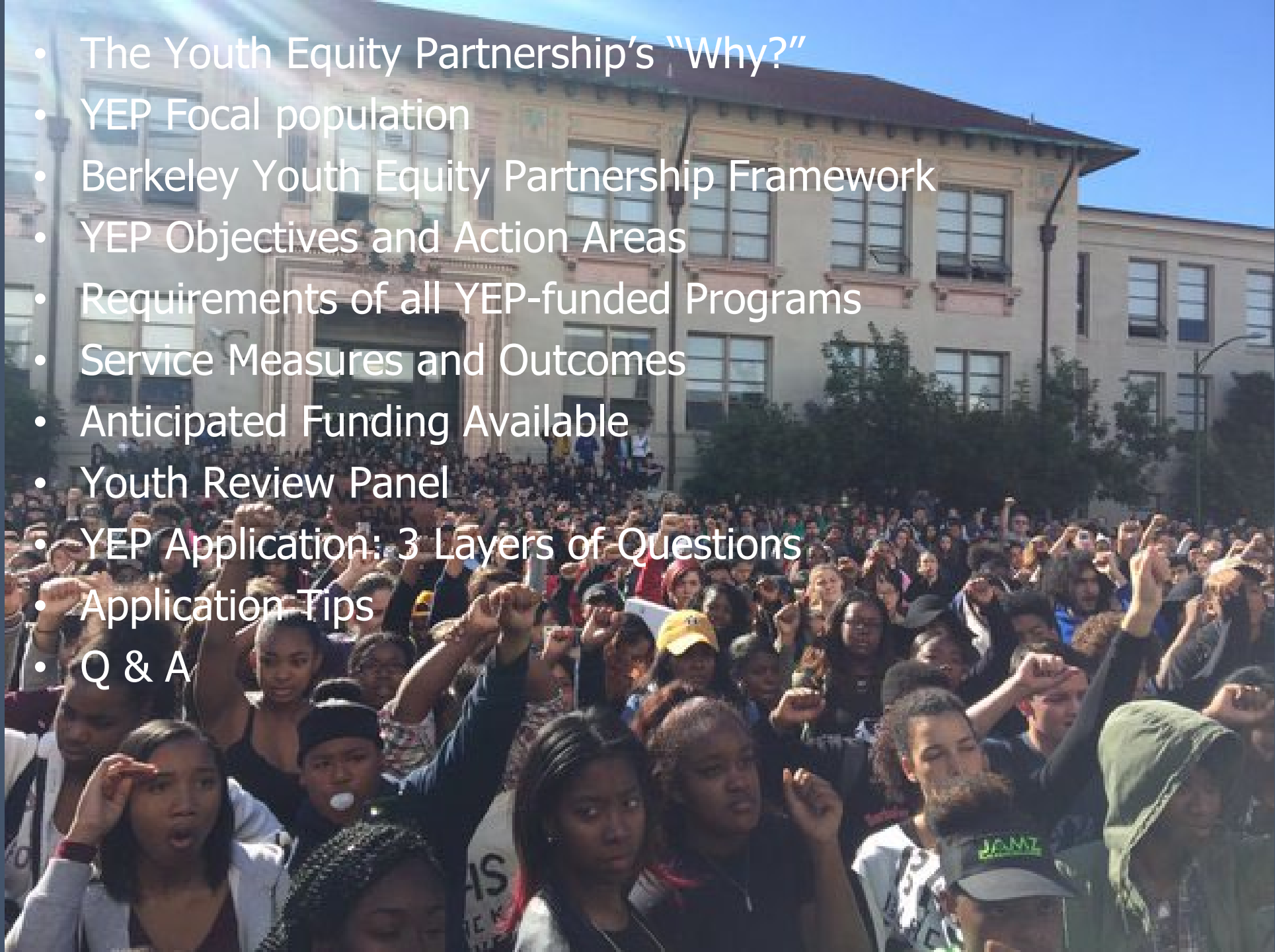
Community Agency Funding

FY 25-28 RFP Workshop

November 15, 2023

Agenda

- The Youth Equity Partnership's "Why?"
- YEP Focal population
- Berkeley Youth Equity Partnership Framework
- YEP Objectives and Action Areas
- Requirements of all YEP-funded Programs
- Service Measures and Outcomes
- Anticipated Funding Available
- Youth Review Panel
- YEP Application: 3 Layers of Questions
- Application Tips
- Q & A



YEP Focal Population

YEP's Goal:

Create equitable academic and health opportunities and outcomes for African American/Black and Latinx young people in Berkeley.

YEP's Focal Population:

YEP funding is designated for African American/Black and Latinx children and youth who live and/or go to school in Berkeley.



Berkeley Youth Equity Partnership (YEP) Framework

Vision: African American/Black and Latinx young people who live and/or go to school in Berkeley thrive academically, physically, and emotionally.

Objectives: Every African American/Black and Latinx Young Person in Berkeley is:



Strategies: YEP prioritizes these approaches to achieve our objectives:








Guiding Principles: These values guide and shape YEP's work:

Racial Equity | Youth-Centered | Results-Driven | Collective Impact



YEP Objectives & Action Areas by Age Group

OBJECTIVES					
Kindergarten Ready 	Successful in School 	College & Career Ready 	Healthy, Connected, & Resilient 	Supported at School & at Home 	
ACTION AREAS	<ol style="list-style-type: none"> 1. Increase access to affordable child care <i>(ages 0 – 5)</i> 2. Ensure high quality child care <i>(ages 0 – 5)</i> 3. Provide child development and kindergarten readiness resources and build mutual support <i>(parents/ guardians of children ages 0 – 5)</i> 	<ol style="list-style-type: none"> 1. Provide tutoring, mentoring, and/or other academic support focused on increasing literacy and/or math skills and achievement in, after, and out of school <i>(TK – 8th grade)</i> * Priority given to “high dosage” tutoring programs * 	<ol style="list-style-type: none"> 1. Provide cohort-based and/or one-on-one academic programs and social supports to prepare students for college and/or career <i>(6th – 12th grade)</i> 2. Provide college preparedness and transition support to high school students/families <i>(9th – 12th grade)</i> 3. Offer structured, hands-on work experience <i>(9th – 12th grade)</i> 4. Support concurrent/dual enrollment to create post-secondary momentum <i>(6th – 12th grade)</i> 	<ol style="list-style-type: none"> 1. Provide developmental and behavioral health services and supports <i>(TK – 12th grade)</i> 2. Provide youth community action or peer education programs on issues that impact young people and their communities <i>(6th – 12th grade)</i> 3. Provide activities that promote positive racial and cultural identity and build identify-affirming connections among young people <i>(TK – 12th grade)</i> 	<ol style="list-style-type: none"> 1. Provide parents/guardians with knowledge, skills, and tools that help them partner with schools to support their child(ren)’s education <i>(parents/guardians of children TK – 12th grade)</i>

Requirements for All YEP-funded Programs

- 1. Organizational commitment and capacity to serve African American/Black and Latinx young people** and their families with culturally responsive programs and services.
- 2. YEP funding fully dedicated to serving African American/Black and Latinx young people.**
- 3. Proposed program aligns with at least one of YEP's objectives and action areas.**
- 4. Proposed program strategy is validated by research, evidence and/or data.**
- 5. Proposed program includes a meaningful family partnership component.**
- 6. Proposed strategy includes collaboration with 1+ public or nonprofit agencies.**
- 7. Funded agencies maintain a website with up-to-date program information, schedules, and program contact information.**

YEP Performance Measures

* Service measures and outcomes are assigned based on action area *

	<i>Purpose</i>	<i>Answers</i>	<i>Examples</i>
<i>Service Measures</i>	Describes the key types of services provided to program participants	What did your program do?	<ul style="list-style-type: none"> • Tutoring sessions • Workshop sessions • Families contacted
<i>Units of Service (UOS)</i>	Quantifies the amount of services provided to program participants	How much did your program do?	<ul style="list-style-type: none"> • 40 students x 2 tutoring sessions/week x 40 weeks = 3,200 UOS
<i>Outcomes</i>	Captures the impact of services on the lives of program participants	How are participants better off as a result of your program?	<ul style="list-style-type: none"> • 93% of preschool students transitioned to TK/K • 81% of students improved their proficiency in math • 89% of graduating seniors enrolled in college

Important: (1) Include the sources of your service measures and outcome data; (2) show formulas so we understand your calculations.

Anticipated YEP \$ Available

\$1,684,109

per year

- 4 years (pending \$ availability and satisfactory agency performance)

YEP Application: 3 Layers of Questions



- Detailed info **to be completed by all RFP applicants.**
- Select 1 YEP objective that corresponds most closely to your program.
- Selection generates YEP Supplemental Questions.

- 13 questions total **to be completed by all YEP Applicants.**
- Select 1 Action Area that corresponds most closely to your program.
- Selection will generate Action Area Questions.

- 5 - 6 questions per Action Area.
- 1 Action Area per application.

Youth Review Panel

**BERKELEY YOUTH
EQUITY PARTNERSHIP IS**

HIRING

**INTERNS FOR:
YOUTH REVIEW PANEL**

**ARE YOU A BERKELEY HIGH, BERKELEY TECH ACADEMY
OR BERKELEY CITY COLLEGE STUDENT LOOKING TO
HAVE A SAY IN HOW \$1.7 MILLION GETS ALLOCATED TO
PROGRAMS THAT SERVE BLACK AND LATINX PEOPLE?**

APPLY BY: 11/17/23

ELIGIBILITY REQUIREMENTS

- Age 16-21 years old
- Current Berkeley High School, Berkeley Tech Academy or Berkeley City College Student
- Identify as Black/African American and/or Latinx
- Time Commitment: Approximately 40 hours, 12/2023-4/2024 after school & weekends

WE ARE LOOKING FOR:

- Committed students
- Enthusiastic
- Ambitious
- Team player

Have any questions? Feel free to email
Katie Cobian: kcobian@berkeleyca.gov

BENEFITS

Paid position - \$18.07/hr
Letter of Recommendation
Good for resume or CV building
Improve public speaking skills
Gain critical thinking skills

**USE QR
CODE BELOW**



YEP APPLICATION

Application Tips

- **Read the whole RFP, including all supplemental documents.**
- Make sure applications are youth-friendly: clear explanations, concise, easy to understand, etc.
- Assume reader knows nothing about your program/agency, but a lot about the YEP focal population.
- Show formulas/calculations (e.g., service measures, outcomes, UOS, budget, budget narrative).
- Demonstrate clear alignment with YEP focal population and at least one YEP objective and action area.
- Demonstrate past positive impact of the proposed program.



Q & A

- Email additional questions to: CommunityAgencyRFP@berkeleyca.gov
- **Include "YEP" in the subject line**
- Find responses posted: berkeleyca.gov/doing-business/working-city/bid-proposal-opportunities/community-agency-request-proposal



YEP's Vision:

African American/Black and Latinx young people who live and/or go to school in Berkeley thrive academically, physically and emotionally.

Thank you!