

# Local Development Overview

Berkeley Environment & Climate Commission – April 22, 2026



# What is Ava Community Energy?



Ava Community Energy (Ava) is a local community choice power supplier that provides Alameda County and the cities of Lathrop, Stockton, and Tracy with renewable energy options at lower rates. Starting in May 2026, Ava Community Energy will also serve unincorporated San Joaquin County.

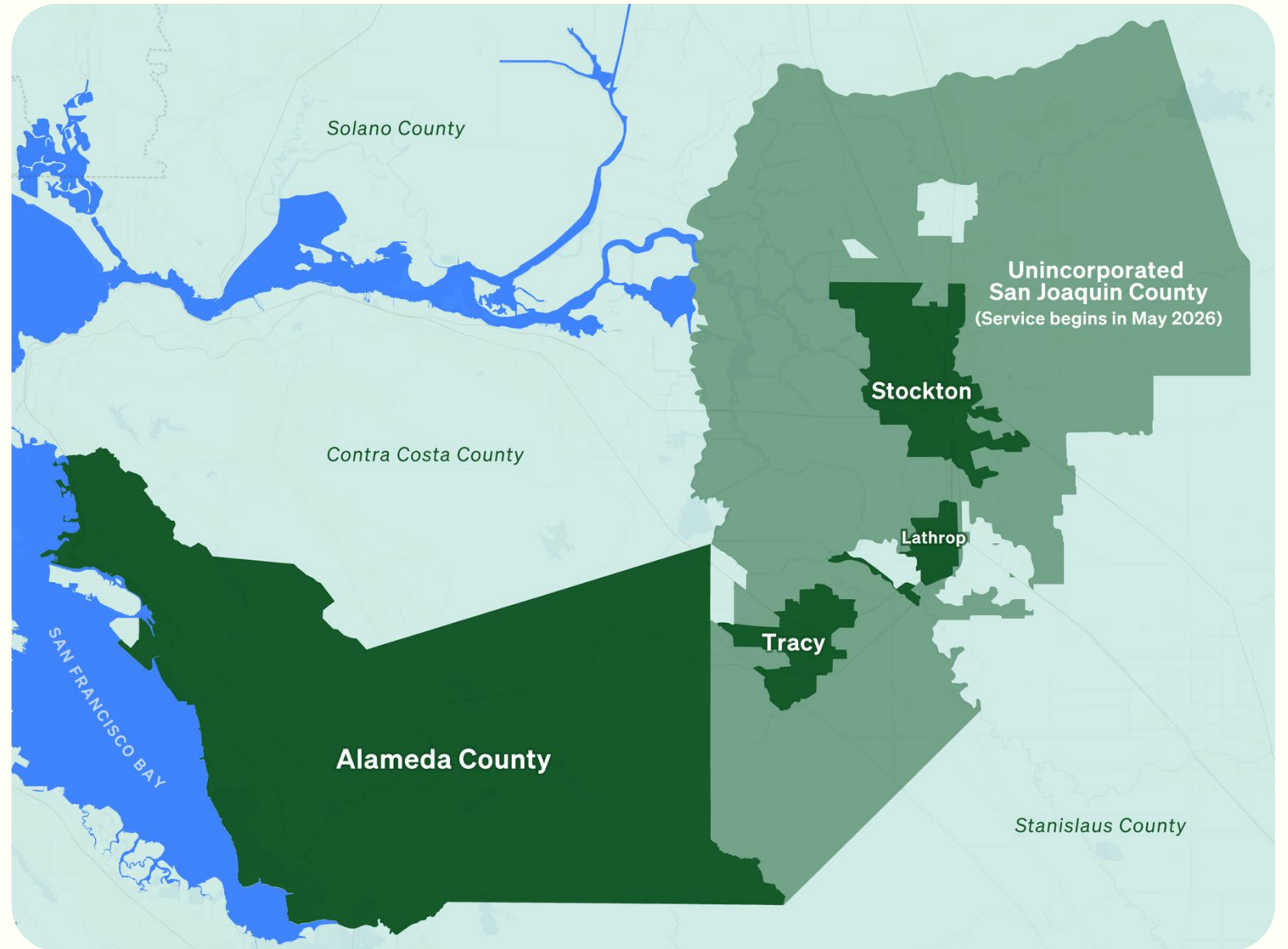
As a not-for-profit public agency, Ava reinvests revenue back into the community through local electrification programs, clean power projects, and support for community organizations.

**Our mission is to drive increasing access to clean energy, serving the needs of our customers and the well-being of our community.**

# Service Territory

We serve Alameda County and the Cities of Lathrop, Stockton, and Tracy. Unincorporated San Joaquin County will begin service with Ava in 2026.

Ava is the default provider of electricity generation service for all customers in our service territory. Customers are automatically enrolled in our service and are billed by PG&E.



# Community Investment

As a public agency, Ava does not have shareholders. Instead, we return excess revenue to the communities we serve.

As of December 2025:

## \$180+ million

saved since 2018 by our customers compared to what they would have paid PG&E.

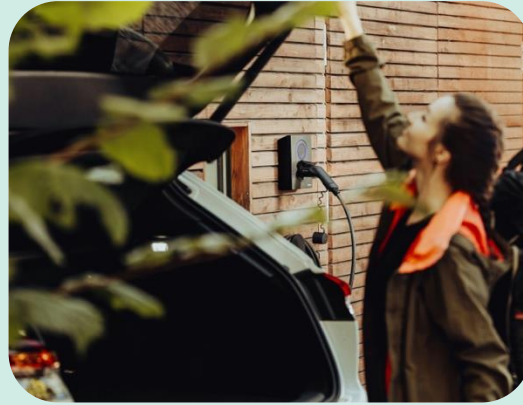
## \$115 million

Reinvested in our community since 2018 through local programs, grants, sponsorships, workforce development, and more.



# Local Development

Ava invests annually in programs & services to reduce energy bills and help our customers transition to clean energy.



## Customer Savings and Incentives

We help our customers save when they electrify their lives, like electric bikes, solar and battery systems, clean transportation, and more.



## Resilience

We're building infrastructure and investing in outage-resilient systems through solar and storage initiatives and partnership with community-based organizations.



## Commercial & Municipal Programs

We work with cities and businesses in their transition to clean energy by offering building efficiency, fleet electrification, and infrastructure solutions.

# Local Development Structure



<i>Technical Focus Areas</i>	Energy Efficiency
	Building Electrification
	Transportation Electrification
	Resilience

# Community Investment Grants

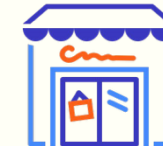
Goal: support and uplift the work of other organizations and community groups aligned with Ava's mission

- Strategic priorities:
  - Workforce development
  - Education and experiential learning
  - Capacity building & community ownership
  - Research & innovation
- Current grants (\$300K per grantee):
  - EV charging – Interfaith Power and Light & Green the Church
  - Clean energy jobs training for youth – AGAPE & Rising Sun
  - Resilience Hub Community Engagement – Emerald Cities Collaborative



# Programs

- Building Efficiency Accelerator
  - Rebates for commercial customers to upgrade to high-efficiency heat pump water heaters
- Resilience Hubs
  - Provide community-based sites with technical assistance and potential incentives for solar and storage solutions
- SmartHome Battery
  - Rebates and participation payments for connecting customer batteries to Ava's virtual power plant
- SmartHome Charging
  - Residential managed EV charging to maximize customer savings and use of renewable energy
- Ava Bike Electric
  - Incentives to increase access to e-bikes and support local businesses
- Customer Programs Roadmap
  - Setting framework for program design and deployment 2027-2032



# Clean Energy Services & Infrastructure Delivery

- Driving forward transportation electrification and infrastructure development
  - Programs & services to help our customers electrify their vehicles (e.g., Ava Charge, Bike Electric, Smart Home Charging)
- Originate and develop clean energy projects in partnership with our JPA members
  - Infrastructure project development and overseeing operation & maintenance of project lifecycle (e.g., Critical Municipal Facilities)
- Collaborate with external partners (e.g., PG&E, project developers, operation & maintenance providers, etc.)



# Ava Charge Overview

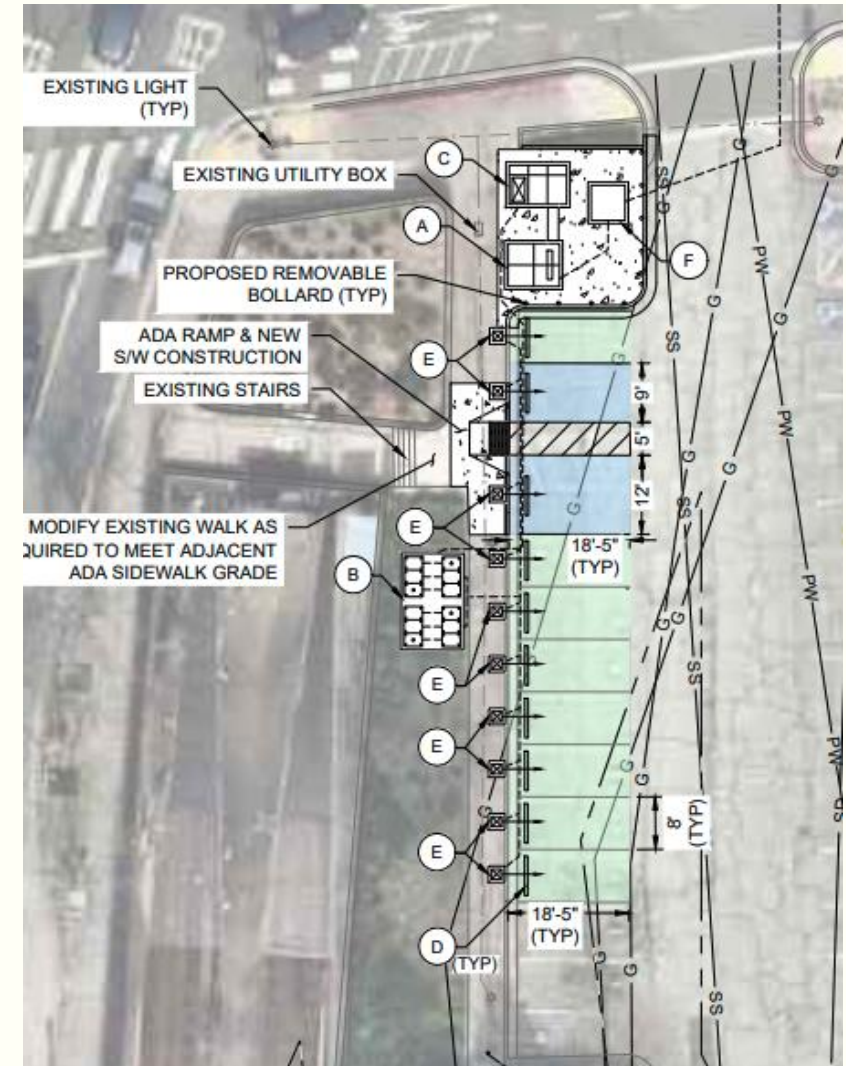
Ava Charge is our solution to increase EV adoption by providing more access to public fast chargers that are convenient, reliable, and fast.

- Predominantly designed for those with no access to home charging
- Site owners are Ava member jurisdictions
  - No capital cost to Cities throughout project lifecycle
- Project characteristics:
  - 10+ charging stalls
  - 150+ kW fast chargers
  - Publicly accessible 24/7
  - Close proximity to multi-family housing and amenities
- 13 projects currently in varying phases of development
  - First project currently operational in downtown Oakland



# Ava Charge in Berkeley

- Off-street parking spaces at corner of Adeline St & Alcatraz Ave
- 10 fast chargers at 10 EV charging-only stalls
- Project status:
  - Interconnection capacity secured with PG&E
  - Conceptual design complete
- Next steps:
  1. Negotiate and execute contract with project developer
  2. Complete Issue-for-Permit design package



# Critical Municipal Facilities (CMF) Overview

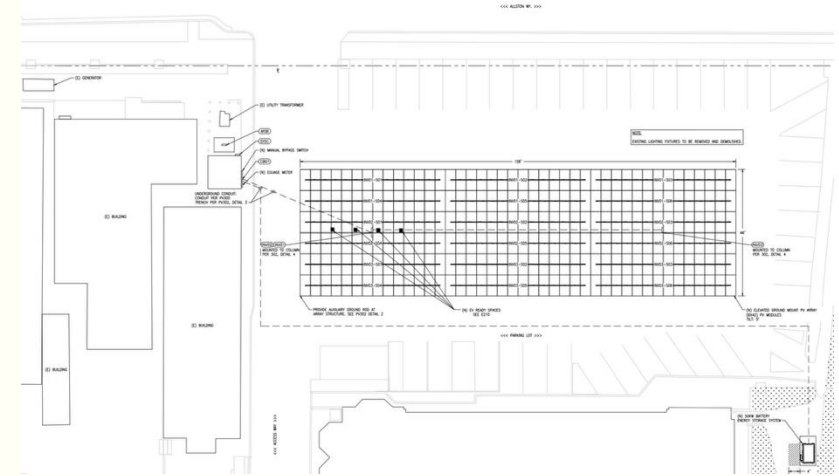
CMF is our solution to providing energy resilience by powering essential City facilities with solar & battery systems that keep critical services running during power outages.

- 8 sites across 4 Cities
  - Fire stations, community centers, food banks, equipment yards, and city council buildings
  - Installing 490 kW of solar panels and 1.34 MWh of battery storage
  - Generating 778,000 kWh of clean energy in first year alone
- 25-year Power Purchase Agreements
  - No upfront costs to Cities and long-term energy price protection
  - Reducing energy costs and increasing local generation



# CMF in Berkeley

- Corporate Yard
  - 151 kW of solar panels
  - 245 kWh of battery storage
  - Permits currently under review
  - Expected completion: 10/2026
- Live Oak Rec Center
  - 36 kW of solar panels
  - 81 kWh of battery storage
  - Permits approved
  - Expected completion: 6/2026





Community Energy